

RNAV (RNP) Z RWY 23

ROBERTS FLD (RDM)

| | | |
|------------------------|-----------------------------|---|
| APP CRS 226° | Rwy Ldg TDZE Apt Elev | 7031 3067 3082 |
|------------------------|-----------------------------|---|

RNP AR APCH - GPS, RF. Authorization required. From ARNOY: min RNP 0.70.

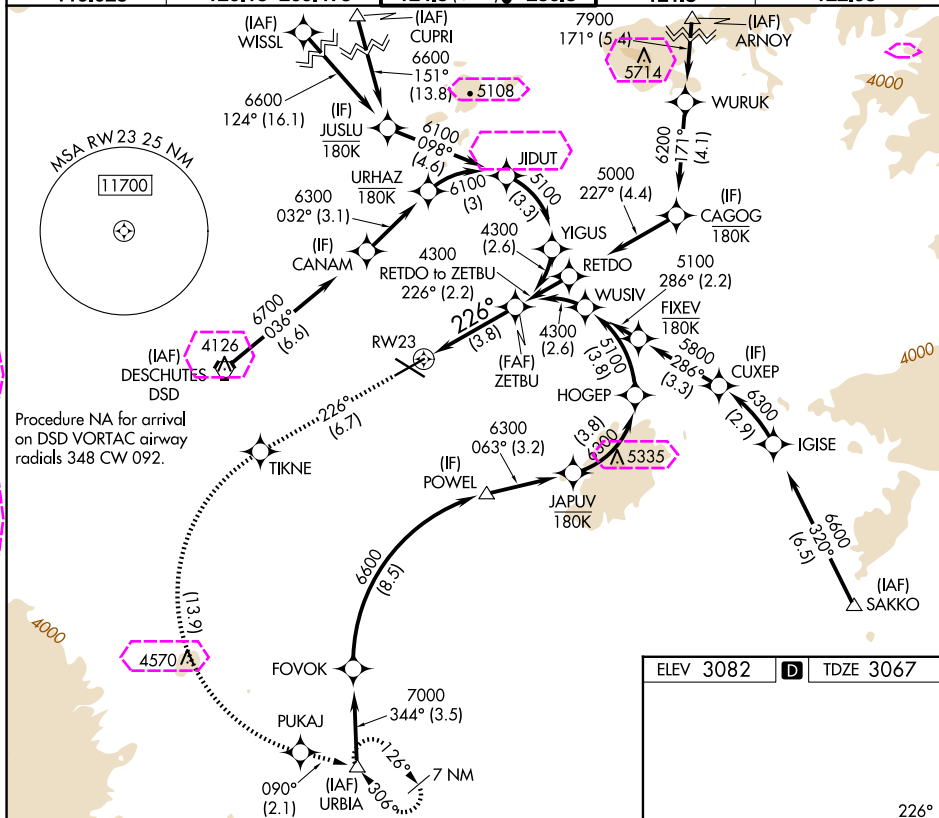
For uncompensated Baro-VNAV systems, procedure NA below -16°C or above 54°C. For inop ALS, increase RNP 0.10 all Cats visibility to 3/4 SM. For inop ALS, increase RNP 0.30 all Cats visibility to 1 3/4 SM.




MALS



MISSED APPROACH: Climb to 8500 on track 226° to TIKNE left turn to PUKAJ and on track 090° to URBIA and hold, continue climb-in-hold to 8500.

| | | | | |
|---------|----------------|----------------------|---------|--------|
| ATIS | SEATTLE CENTER | REDMOND TOWER ★ | GND CON | UNICOM |
| 119.025 | 126.15 269.475 | 124.5 (CTAF) 0 256.8 | 121.8 | 122.95 |



| | | | | | | |
|----------------------|--|---|--|------------|------------|--------------------|
| 8500 ↑ tr 226° | TIKNE  |  | PUKAJ  | tr 090° | URBIA △ | ZETBU ↓ 4300 |
|----------------------|--|---|--|------------|------------|--------------------|

VGSI and RNAV glidepath not coincident (VGSI Angle 3.00/TCH 51).

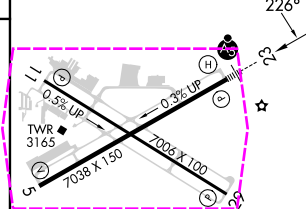
3.00/Tc
PW/23

See planview for multiple IF locations.

GP 3.00°
TCH 47

| | | | | |
|-------------|--------------------|---|---|---|
| | A | B | C | D |
| RNP 0.10 DA | 3322-½ 255 (300-½) | | | |
| RNP 0.30 DA | 3552-1 485 (500-1) | | | |

AUTHORIZATION REQUIRED



REIL Rwy 5, 11, and 29 **L**
HIRL Rwy 5-23 **L**
MIRL Rwy 11-29 **L**

REDMOND, OREGON

Amdt 2A 12JUN25

ROBERTS FID (RDM)

44°15'N-121°09'W

RNAV (RNP) Z RWY 23

