

REDMOND, OREGON

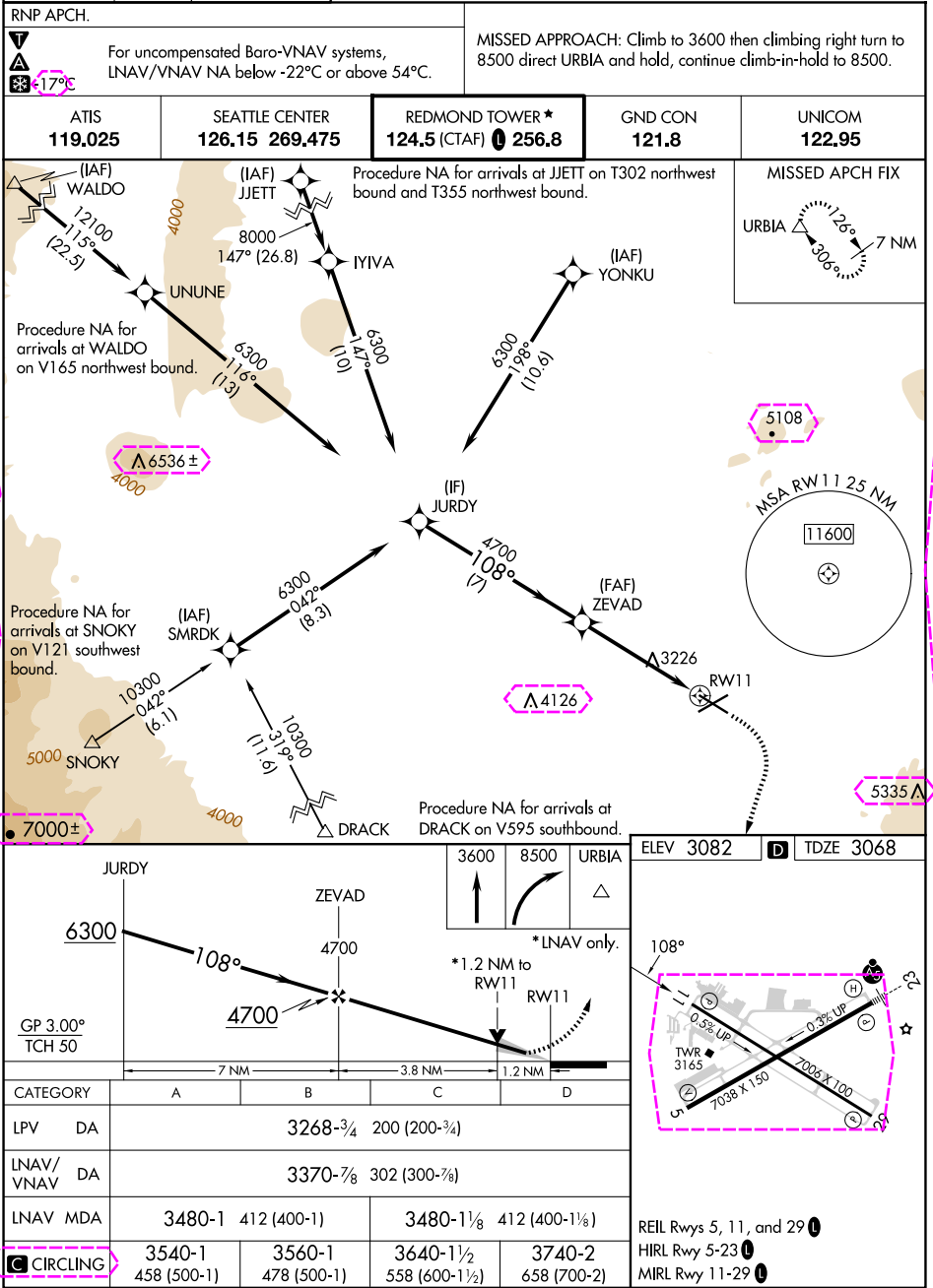
AL-345 (FAA)

25163

WAAS CH 53514 W11A	APP CRS 108°	Rwy Ldg TDZE Apt Elev 7006 3068 3082
--	------------------------	--

RNAV (GPS) RWY 11

ROBERTS FLD (RDM)



NW-1, 10 JUL 2025 to 07 AUG 2025

NW-1, 10 JUL 2025 to 07 AUG 2025

REDMOND, OREGON

Amdt 3 30JAN20

44°15'N-121°09'W

ROBERTS FLD (RDM)

RNAV (GPS) RWY 11

REDMOND, OREGON

AL-345 (FAA)

25219

WAAS CH 53514 W11A	APP CRS 108°	Rwy Ldg TDZE Apt Elev 7006 3068 3082
--	------------------------	--

RNAV (GPS) RWY 11

ROBERTS FLD (RDM)

RNP APCH.

▼

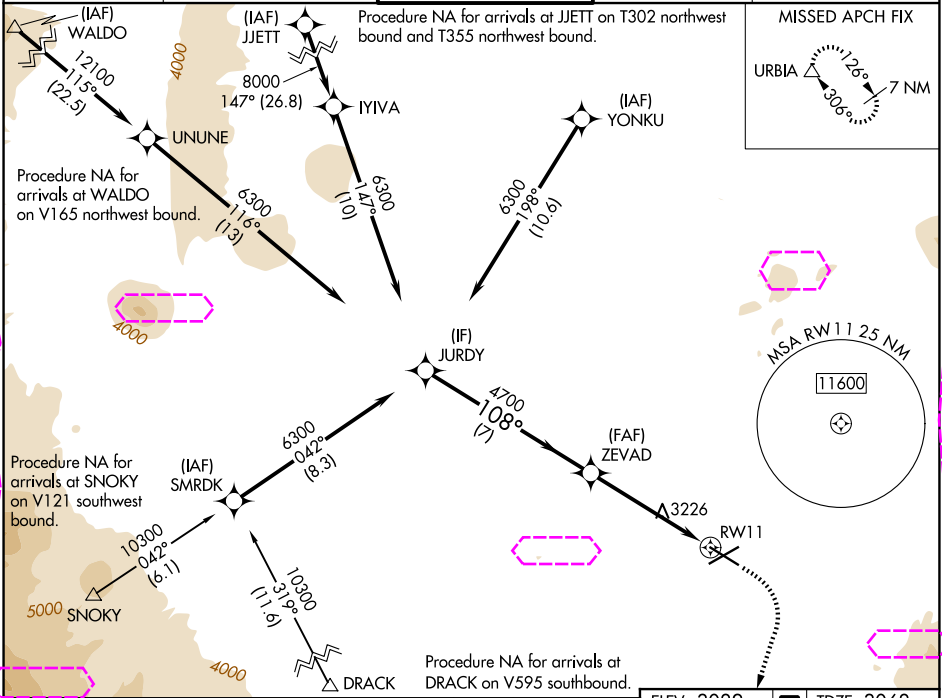
⚠

⚠

For uncompensated Baro-VNAV systems,
LNAV/VNAV NA below -22°C or above 54°C.

MISSED APPROACH: Climb to 3600 then climbing right turn to
8500 direct URBIA and hold, continue climb-in-hold to 8500.

ATIS 119.025	SEATTLE CENTER 126.15 269.475	REDMOND TOWER ★ 124.5 (CTAF) 256.8	GND CON 121.8	UNICOM 122.95
------------------------	---	--	-------------------------	-------------------------



JURDY				
ZEVAD				
GP 3.00° TCH 50				
7 NM 3.8 NM 1.2 NM				
CATEGORY	A	B	C	D
LPV DA	3268-¾ 200 (200-¾)			
LNAV/VNAV DA	3370-⅞ 302 (300-⅞)			
LNAV MDA	3480-1	412 (400-1)	3480-1½	412 (400-1½)
CIRCLING	3540-1 458 (500-1)	3560-1 478 (500-1)	3640-1½ 558 (600-1½)	3740-2 658 (700-2)

ELEV 3082 TDZE 3068

3600 8500 URBIA

*LNAV only.

*1.2 NM to RW11

RW11

108°

0.5% UP

0.3% UP

7038 X 150

7006 X 100

TWR

REIL Rwy 5, 11, and 29
HIRL Rwy 5-23
MIRL Rwy 11-29

REDMOND, OREGON

ROBERTS FLD (RDM)

Amdt 3 30JAN20

44°15'N-121°09'W

RNAV (GPS) RWY 11