

REDMOND, OREGON

AL-345 (FAA)

25163

LOC/DME I-RDM	APP CRS	Rwy Ldg	7031
109.1	226°	TDZE	3067
Chan 28		Apt Elev	3082

ILS or LOC RWY 23

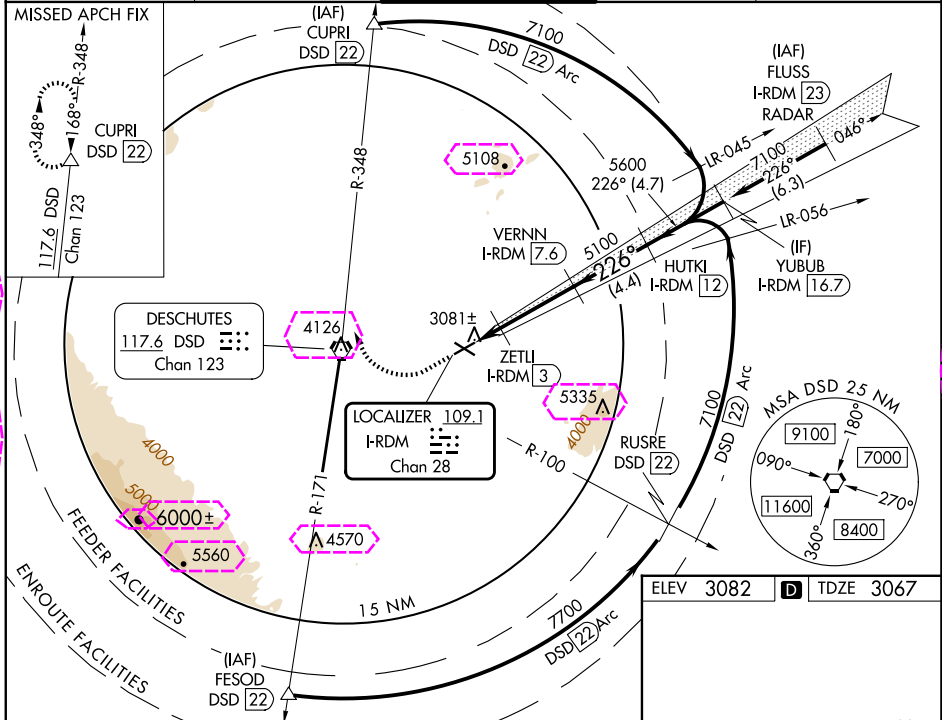
ROBERTS FLD (RDM)

DME required.

Autopilot coupled approach NA below 4370. When local altimeter setting not received, use Bend altimeter setting increase S-ILS 23 DA to 3348 feet; increase all MDAs 100 feet increase S-LOC 23 Cat C/D/E visibility $\frac{3}{8}$ SM and Circling Cats C/D/E visibility $\frac{1}{2}$ SM. For inop ALS, increase S-ILS 23 Cat E visibility to $\frac{3}{4}$ SM and S-LOC 23 Cat C/D/E visibility to 1 SM. For inop ALS when using Bend altimeter setting increase S-ILS 23 all Cats visibility to $\frac{7}{8}$ SM and increase S-LOC 23 Cats C/D/E visibility to $\frac{1}{2}$ SM. VDP NA when using Bend altimeter setting.

MISSED APPROACH: Climb to 3700 then climbing right turn to 7000 on heading 320° and DSD VORTAC R-348 to CUPRI/DSO 22 DME and hold.

ATIS	SEATTLE CENTER	REDMOND TOWER★	GND CON	UNICOM
119.025	126.15 269.475	124.5 (CTAF) 256.8	121.8	122.95



3700	7000	DSO	CUPRI	VGSI and ILS glidepath not coincident (VGSI Angle 3.00/TCH 51).	YUBUB I-RDM 16.7
↑	hdg 320°	R-348	△		
Use I-RDM DME when on the localizer course.					
*LOC only	*I-RDM	I-RDM	I-RDM		
	1.3	2.4	3		
1.1 0.6 4.6 NM 4.4 NM 4.7 NM					
CATEGORY	A	B	C	D	E
S-ILS 23	3267-1/2 200 (200-1/2)				
S-LOC 23	3440-1/2	373 (400-1/2)	3440-5/8 373 (400-5/8)		
CIRCLING	3540-1 458 (500-1)	3560-1 478 (500-1)	3640-1 1/2 558 (600-1 1/2)	3740-2 658 (700-2)	3820-2 1/2 738 (800-2 1/2)

ELEV 3082 D TDZE 3067

REIL Rwy 5, 11, and 29

HRL Rwy 5-23

MRL Rwy 11-29

TWR 3165

7038 X 150

7006 X 100

REDMOND, OREGON
Amdt 5B 14JUL22

44°15'N-121°09'W

ILS or LOC RWY 23

LOC/DME I-RDM	APP CRS	Rwy Ldg	7031
<u>109.1</u>	226°	TDZE	3067
Chan 28		Apt Elev	3082

ILS or LOC RWY 23
ROBERTS FLD (RDM)

DME required.

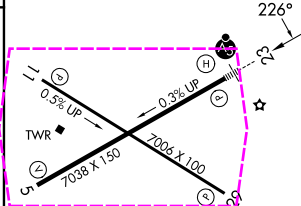
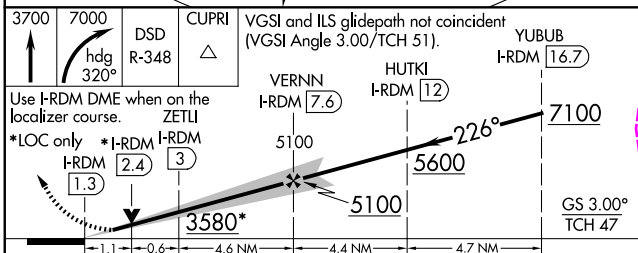
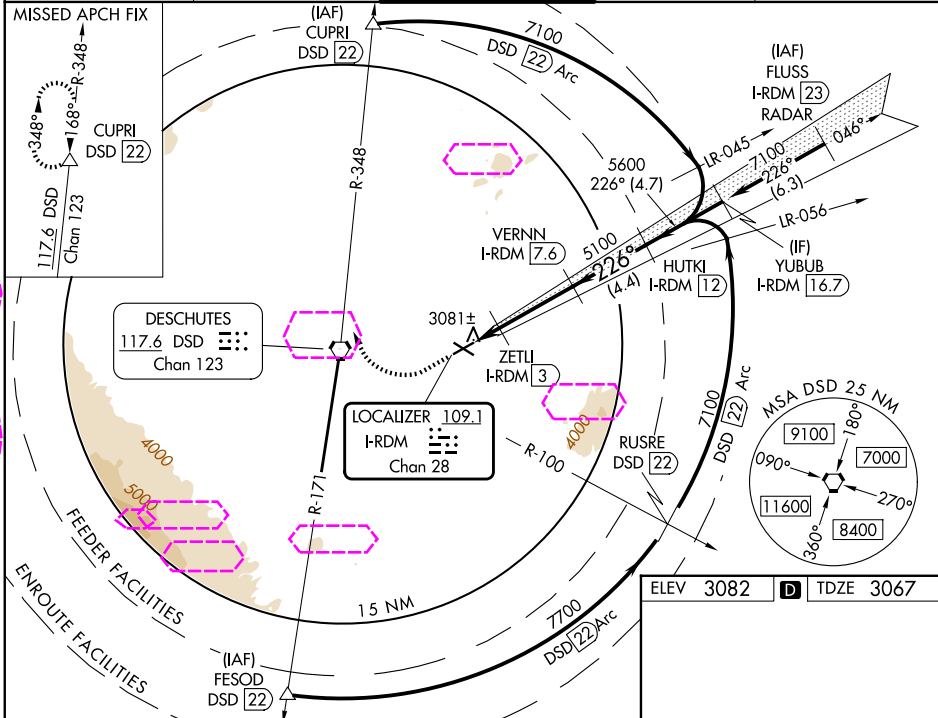
Autopilot coupled approach NA below 4370. When local altimeter setting not received, use Bend altimeter setting increase S-ILS 23 DA to 3348 feet; increase all MDAs 100 feet. Increase S-LOC 23 Cat C/D/E visibility $\frac{3}{8}$ SM and Circling Cats C/D/E visibility $\frac{1}{2}$ SM. For Inop ALS, increase S-ILS 23 Cat E visibility to $\frac{3}{4}$ SM and S-LOC 23 Cat C/D/E visibility to 1 SM. For Inop ALS when using Bend altimeter setting increase S-ILS 23 all Cats visibility to $\frac{3}{8}$ SM and increase S-LOC 23 Cats C/D/E visibility to $\frac{1}{8}$ SM. VDP NA when using Bend altimeter setting.

MALSR



MISSED APPROACH:
Climb to 3700 then
climbing right turn to
7000 on heading 320°
and DSD VORTAC
R-348 to CUPRI/DSD
22 DME and hold.

ATIS	SEATTLE CENTER	REDMOND TOWER★	GND CON	UNICOM
119.025	126.15 269.475	124.5 (CTAF) 0 256.8	121.8	122.95



CATEGORY	A	B	C	D	E
S-ILS 23	3267-½ 200 (200-½)				
S-LOC 23	3440-½	373 (400-½)	3440-⅝ 373 (400-⅝)		
CIRCLING	3540-1 458 (500-1)	3560-1 478 (500-1)	3640-1½ 558 (600-1½)	3740-2 658 (700-2)	3820-2½ 738 (800-2½)

REIL Rwy 5, 11, and 29 **L**
HIRL Rwy 5-23 **L**
MIRL Rwy 11-29 **L**

REDMOND, OREGON
Amdt 5B 14JUL22

44°15'N-121°09'W

ROBERTS FLD (RDM)
ILS or LOC RWY 23

NW-1, 07 AUG 2025 to 04 SEP 2025