

UNIVERSAL CITY, TEXAS
RANDOLPH AFB (KRND)

SC-3, 10 JUL 2025 to 07 AUG 2025

(YODUH2.YODUH) 25219

AL-341 (FAA)

RANDOLPH AFB (KRND)

YODUH TWO DEPARTURE (RNAV)

UNIVERSAL CITY, TEXAS

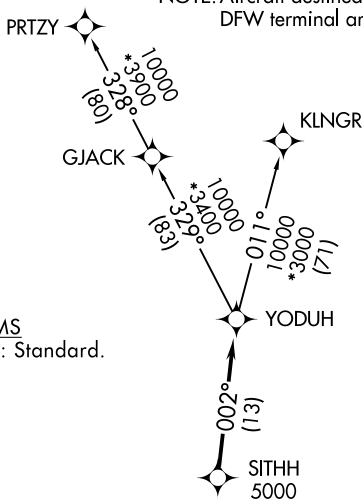
SAN ANTONIO DEP CON
127.1 290.225
ATIS ★
290.525
ATIS (HANGOVER) ★
327.8
CLNC DEL (15L-33R)
338.35
GND CON
119.65 275.8
GND CON (HANGOVER)
124.75 353.75
TOWER ★
128.25 294.7
HANGOVER TOWER ★
120.5 291.1

RNAV 1 - DME/DME IRU or GPS.

RADAR required for non-GPS equipped aircraft.
RADAR required.

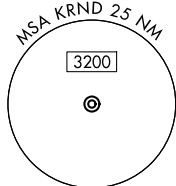
**TOP ALTITUDE:
ASSIGNED BY ATC**

NOTE: Aircraft destined for airports north/northeast of
DFW terminal area must file the KLNGR Transition.



TAKEOFF MINIMUMS

Rwys 15L/R, 33L/R: Standard.



NOTE: Chart not to scale.

DEPARTURE ROUTE DESCRIPTION

TAKEOFF RUNWAYS 15L/R: Climb on heading 145° or as assigned by ATC, for vectors to SITHH, thence. . .

TAKEOFF RUNWAYS 33L/R: Climb on heading 325° or as assigned by ATC, for vectors to SITHH, thence. . .

. . . on track 002° to YODUH, then on transition. Maintain ATC assigned altitude. Expect filed altitude 10 minutes after departure.

KLNGR TRANSITION (YODUH2.KLNGR)
PRTZY TRANSITION (YODUH2.PRTZY)

YODUH TWO DEPARTURE (RNAV)

(YODUH2.YODUH) 07AUG25

UNIVERSAL CITY, TEXAS
RANDOLPH AFB (KRND)

SC-3, 07 AUG 2025 to 04 SEP 2025

SC-3, 07 AUG 2025 to 04 SEP 2025