

(TJANO1.TJANO) 24025

AL-341 (FAA)

RANDOLPH AFB (KRND)
UNIVERSAL CITY, TEXAS

TJANO ONE DEPARTURE (RNAV)

SAN ANTONIO DEP CON
127.1 290.225
ATIS★
290.525
ATIS (HANGOVER)★
327.8
CLNC DEL (Rwy 15L-33R)
338.35
GND CON
119.65 275.8
GND CON (HANGOVER)
124.75 353.75)
TOWER★
128.25 294.7
HANGOVER TOWER★
120.5 291.1

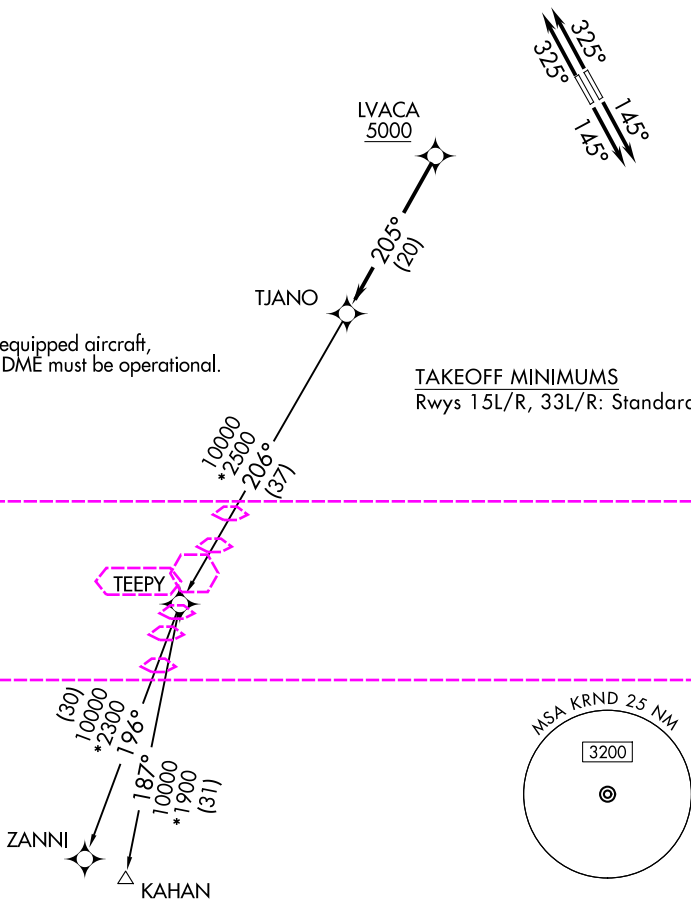
RNAV 1 - DME/DME IRU or GPS.

RADAR required.

**TOP ALTITUDE:
ASSIGNED BY ATC**

NOTE: For non-GPS equipped aircraft,
THX and SAT DME must be operational.

TAKEOFF MINIMUMS
Rwys 15L/R, 33L/R: Standard.



DEPARTURE ROUTE DESCRIPTION

TAKEOFF RUNWAYS 15L/R: Climb on heading 145° or as assigned by ATC,
for vectors to LVACA, thence . . .

TAKEOFF RUNWAYS 33L/R: Climb on heading 325° or as assigned by ATC,
for vectors to LVACA, thence . . .

. . . on track 205° to TJANO, then on Transition. Maintain ATC assigned altitude.

KAHAN TRANSITION (TJANO1.KAHAN)

ZANNI TRANSITION (TJANO1.ZANNI)

TJANO ONE DEPARTURE (RNAV)
(TJANO1.TJANO) 25JAN24

UNIVERSAL CITY, TEXAS
RANDOLPH AFB (KRND)

SC-3, 10 JUL 2025 to 07 AUG 2025

SC-3, 10 JUL 2025 to 07 AUG 2025

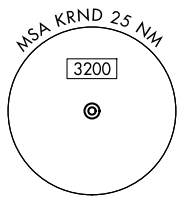
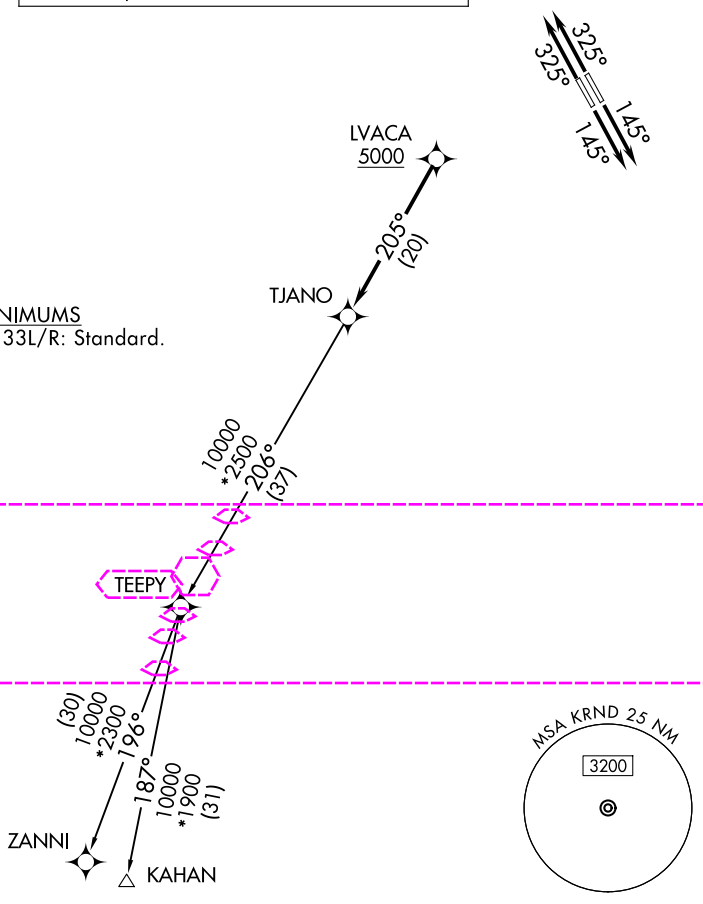
SAN ANTONIO DEP CON
127.1 290.225
ATIS ★
290.525
ATIS (HANGOVER) ★
327.8
CLNC DEL (15L-33R)
338.35
GND CON
119.65 275.8
GND CON (HANGOVER)
124.75 353.75
TOWER ★
128.25 294.7
HANGOVER TOWER ★
120.5 291.1

RNAV 1 - DME/DME IRU or GPS.

RADAR required for non-GPS equipped aircraft.
RADAR required.

TOP ALTITUDE:
ASSIGNED BY ATC

TAKEOFF MINIMUMS
Rwys 15L/R, 33L/R: Standard.



NOTE: Chart not to scale.

DEPARTURE ROUTE DESCRIPTION

TAKEOFF RUNWAYS 15L/R: Climb on heading 145° or as assigned by ATC, for vectors to LVACA, thence. . .
TAKEOFF RUNWAYS 33L/R: Climb on heading 325° or as assigned by ATC, for vectors to LVACA, thence. . .

. . .on track 205° to TJANO, then on transition. Maintain ATC assigned altitude.
Expect filed altitude 10 minutes after departure.

KAHAN TRANSITION (TJANO2.KAHAN)
ZANNI TRANSITION (TJANO2.ZANNI)