

PUEBLO, COLORADO

AL-334 (FAA)

25051

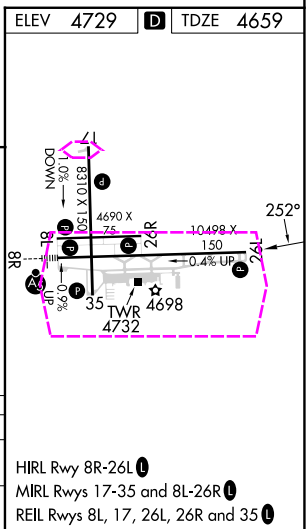
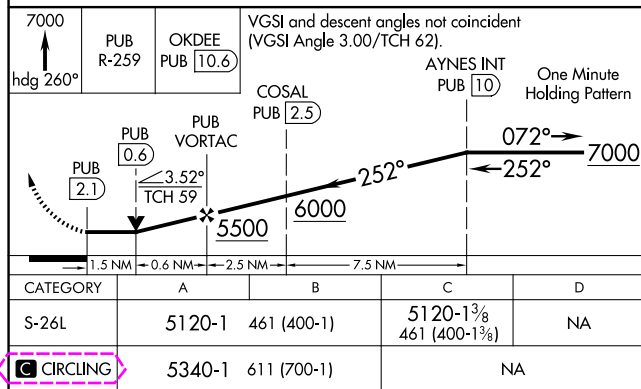
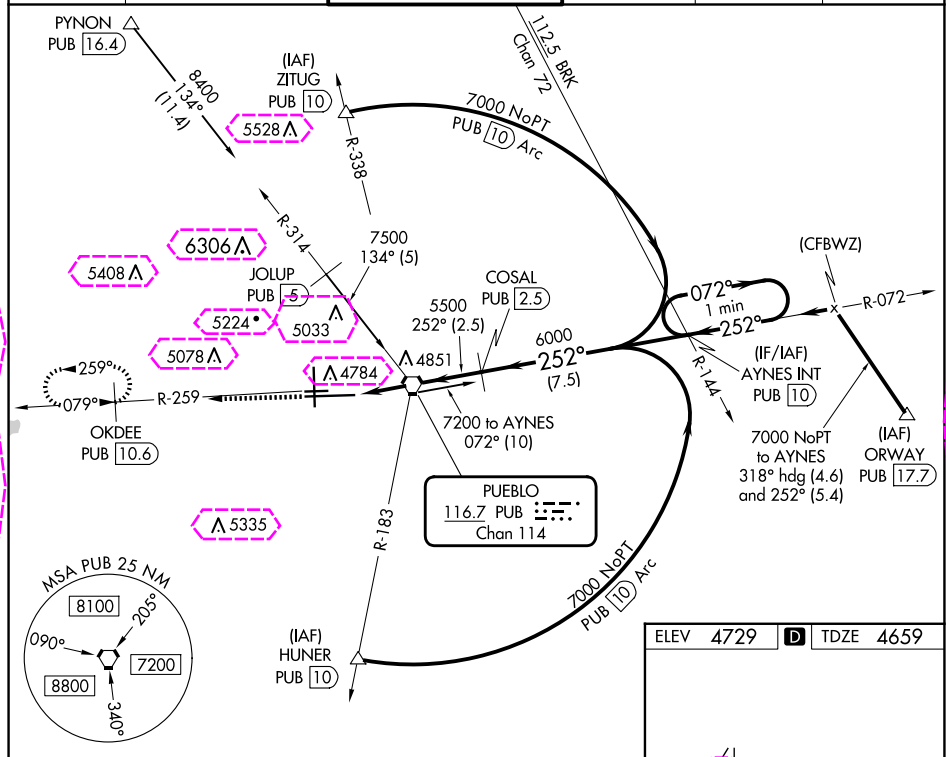
VORTAC PUB 116.7 Chan 114	APP CRS 252°	Rwy Idg 10496 TDZE 4659 Apt Elev 4729
---	------------------------	--

VOR RWY 26L

PUEBLO MEML (PUB)

DME required. RADAR required for procedure entry at PYNON.		MISSED APPROACH: Climb to 7000 on heading 260° and on PUB VORTAC R-259 to OKDEE/PUB 10.6 DME and hold.			
--	--	--	--	--	--

ATIS 125.25	DENVER APP CON ★ 120.1 290.5	PUEBLO TOWER ★ 119.1 (CTAF) 0 257.8	GND CON 121.9	CLNC DEL 120.9	UNICOM 122.95
-----------------------	--	---	-------------------------	--------------------------	-------------------------



PUEBLO, COLORADO
Amdt 1A 08SEP22

38°17'N-104°30'W

PUEBLO MEML (PUB)
VOR RWY 26L

PUEBLO, COLORADO

AL-334 (FAA)

25219

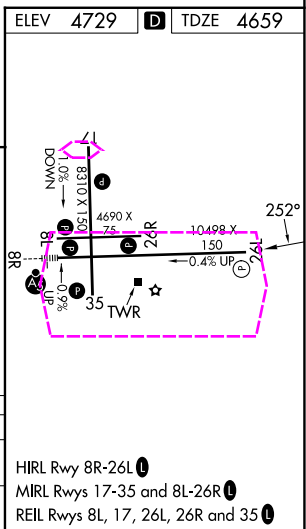
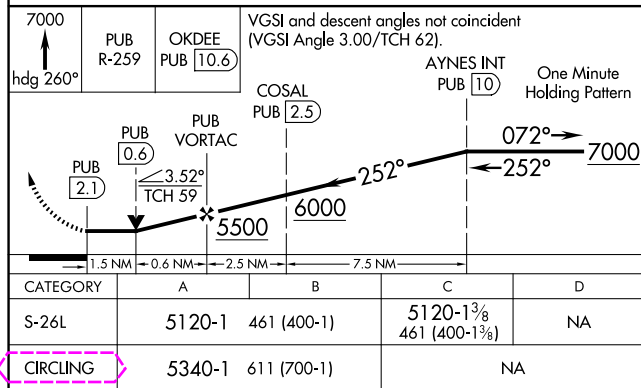
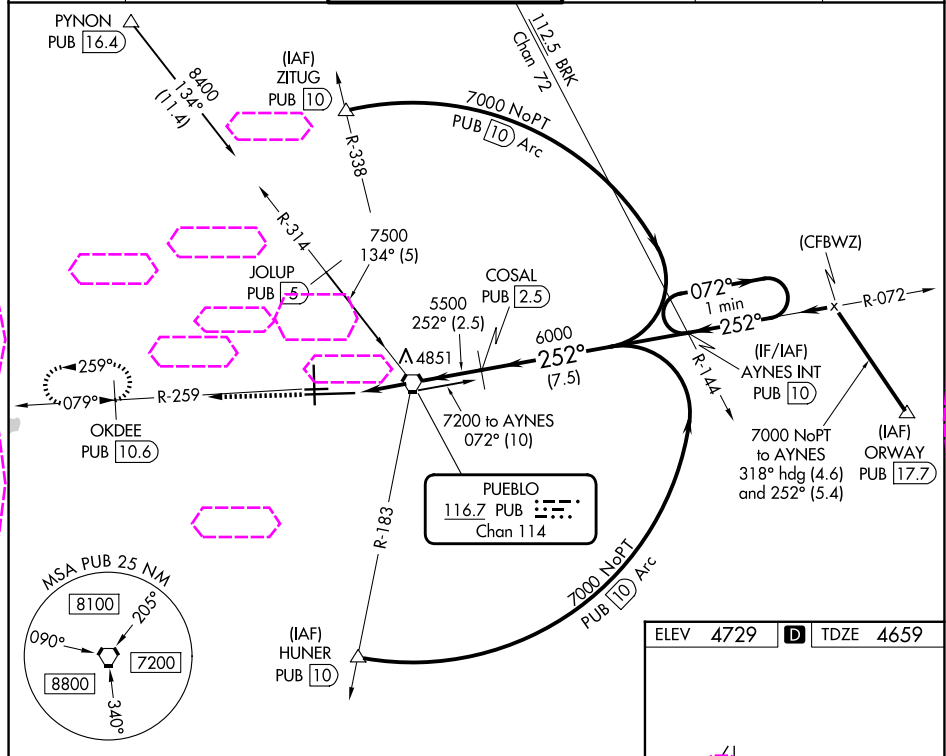
VORTAC PUB 116.7 Chan 114	APP CRS 252°	Rwy Ldg 10496 TDZE 4659 Apt Elev 4729
---	------------------------	--

VOR RWY 26L

PUEBLO MEML (PUB)

DME required. RADAR required for procedure entry at PYNON.	MISSED APPROACH: Climb to 7000 on heading 260° and on PUB VORTAC R-259 to OKDEE/PUB 10.6 DME and hold.
--	--

ATIS 125.25	DENVER APP CON ★ 120.1 290.5	PUEBLO TOWER ★ 119.1 (CTAF) 0 257.8	GND CON 121.9	CLNC DEL 120.9	UNICOM 122.95
-----------------------	--	---	-------------------------	--------------------------	-------------------------



PUEBLO, COLORADO
Amdt 1A 08SEP22

38°17'N-104°30'W

PUEBLO MEML (PUB)
VOR RWY 26L