

PUEBLO, COLORADO

AL-334 (FAA)

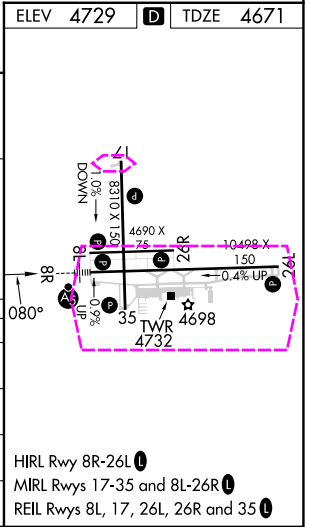
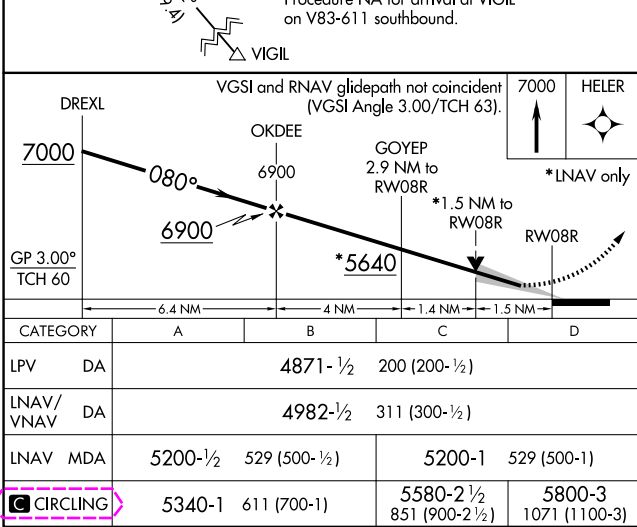
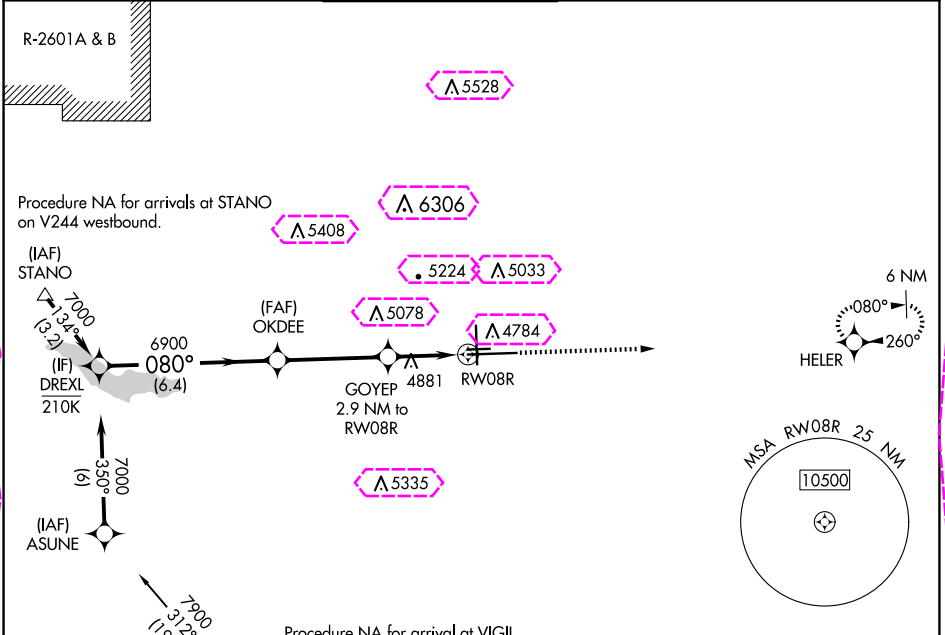
25051

WAAS CH 70531 W08A	APP CRS 080°	Rwy Idg TDZE Apt Elev	10496 4671 4729
--	------------------------	-----------------------------	--

RNAV (GPS) RWY 8R

PUEBLO MEML (PUB)

RNP APCH-GPS.			MALSR	MISSED APPROACH: Climb to 7000 direct HELER and hold.		
For uncompensated Baro-VNAV systems, LNAV/VNAV NA below -22°C or above 54°C. For inop ALS, increase LNAV/VNAV visibility to 7/8 SM.						
ATIS 125.25	DENVER APP CON ★ 120.1 290.5	PUEBLO TOWER ★ 119.1 (CTAF) 0 257.8	GND CON 121.9	CLNC DEL 120.9	UNICOM 122.95	



PUEBLO, COLORADO
Amdt 1B 08SEP22

38°17'N-104°30'W

RNAV (GPS) RWY 8R

PUEBLO MEML (PUB)

PUEBLO, COLORADO

AL-334 (FAA)

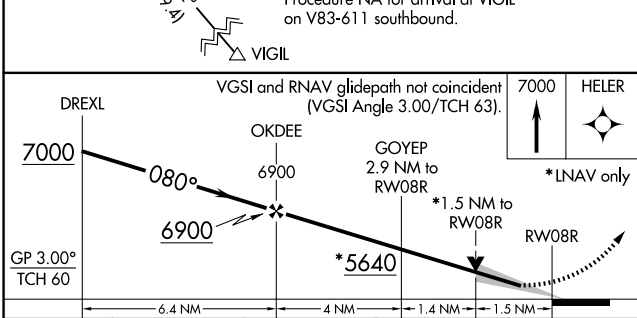
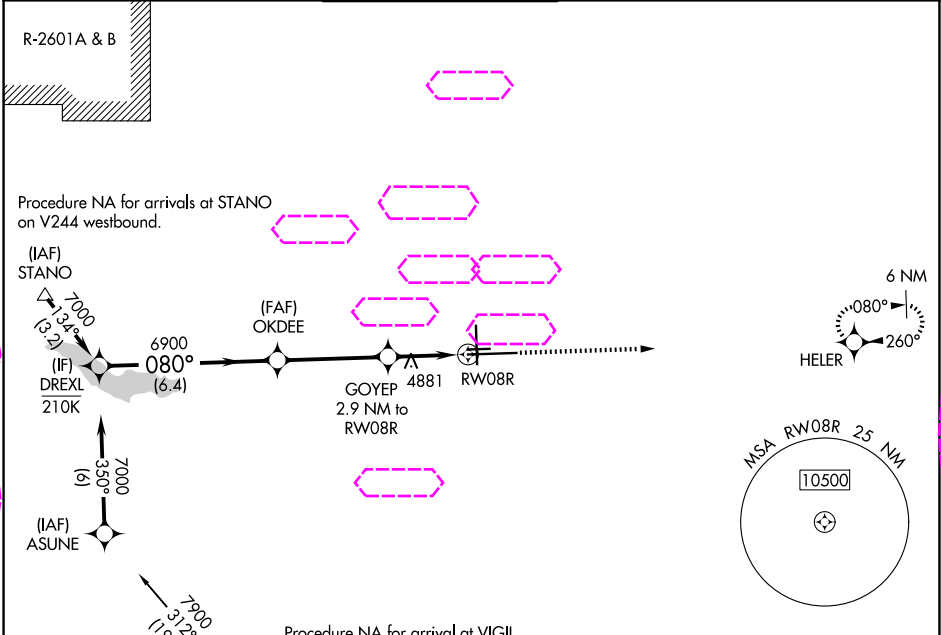
25219

WAAS CH 70531 W08A	APP CRS 080°	Rwy Ldg TDZE Apt Elev	10496 4671 4729
--	------------------------	-----------------------------	--

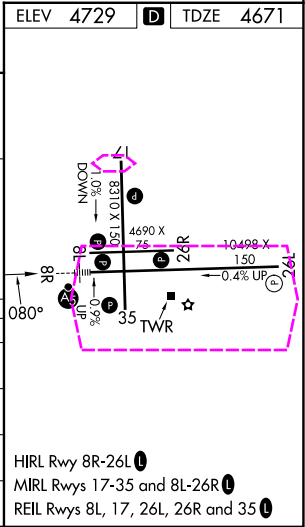
RNAV (GPS) RWY 8R

PUEBLO MEML (PUB)

RNP APCH-GPS. ▼ For uncompensated Baro-VNAV systems, LNAV/VNAV NA below -22°C or above 54°C. For inop ALS, increase LNAV/VNAV visibility to 7/8 SM. ▲				MALSR 	MISSED APPROACH: Climb to 7000 direct HELER and hold.	
ATIS 125.25	DENVER APP CON ★ 120.1 290.5	PUEBLO TOWER ★ 119.1 (CTAF) 0 257.8		GND CON 121.9	CLNC DEL 120.9	UNICOM 122.95



CATEGORY	A	B	C	D
LPV DA	4871-1/2		200 (200-1/2)	
LNAV/VNAV DA	4982-1/2		311 (300-1/2)	
LNAV MDA	5200-1/2	529 (500-1/2)	5200-1	529 (500-1)
CIRCLING	5340-1	611 (700-1)	5580-2 1/2 851 (900-2 1/2)	5800-3 1071 (1100-3)



PUEBLO, COLORADO
Amdt 1B 08SEP22

38°17'N-104°30'W

RNAV (GPS) RWY 8R

SW-1, 07 AUG 2025 to 04 SEP 2025

SW-1, 07 AUG 2025 to 04 SEP 2025