

RNAV (GPS) RWY 35

PUEBLO MEML (PUB)

WAAS CH 42721 W35A	APP CRS 350°	Rwy Idg TDZE Apt Elev	8308 4677 4729
--	------------------------	-----------------------------	---

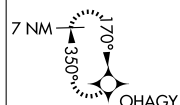
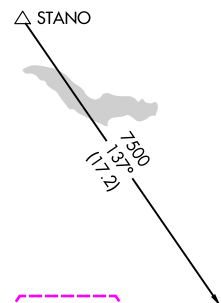
RNP APCH-GPS.

MISSED APPROACH: Climb to 5140 then climbing right turn to 7500 direct OHAGY and hold.

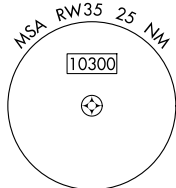
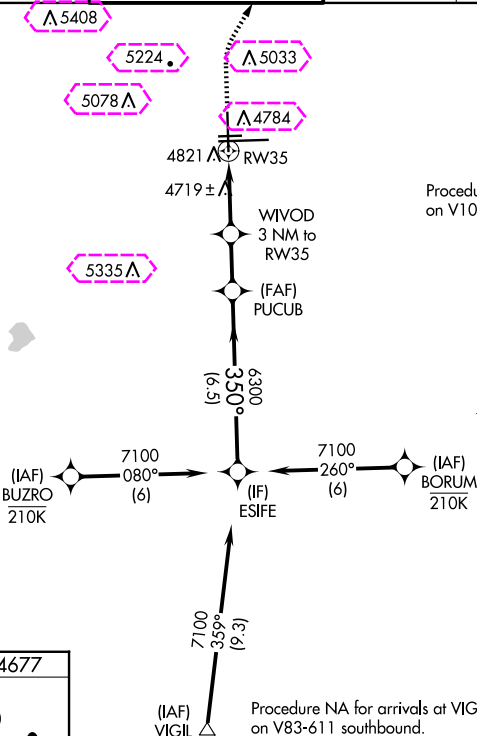
ATIS 125.25	DENVER APP CON ★ 120.1 290.5	PUEBLO TOWER ★ 119.1 (CTAF) 0 257.8	GND CON 121.9	CLNC DEL 120.9	UNICOM 122.95
----------------	---------------------------------	--	------------------	-------------------	------------------

Procedure NA for arrivals at STANO on V244 westbound.

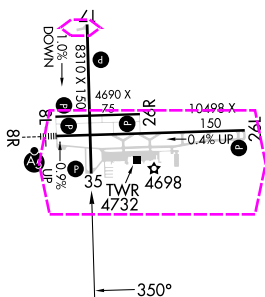
MISSED APCH FIX



Procedure NA for arrivals at ORWAY
on V10-V244 eastbound.



ELEV 4729	D	TDZE 4677
HIRL Rwy 8R-26L L		
MIRL Rwy 17-35 and 8L-26R L		
REIL Rwy 8L, 17, 26L, 26R and 35 L		



5140 ↑	7500 ↗	OHAGY ✦				
CATEGORY	A		B		C	D
LP MDA	5020-1 343 (300-1)					
RNAV MDA	5120-1 443 (400-1)			5120-1 $\frac{3}{8}$ 443 (400-1 $\frac{3}{8}$)		
C CIRCLING	5340-1 611 (700-1)			5580-2 $\frac{1}{2}$ 851 (900-2 $\frac{1}{2}$)		5800-3 1071 (1100-3)

PUEBLO, COLORADO

Orig-C 08SEP22

PUEBLO MEML (PUB)

38°17'N-104°30'W

RNAV (GPS) RWY 35

SW-1, 10 JUL 2025 to 07 AUG 2025

SW-1, 10 JUL 2025 to 07 AUG 2025

PUEBLO, COLORADO

AL-334 (FAA)

25219

WAAS CH 42721 W35A	APP CRS 350°	Rwy Ldg TDZE Apt Elev 8308 4677 4729
--	------------------------	--

RNAV (GPS) RWY 35

PUEBLO MEML (PUB)

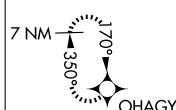
RNP APCH-GPS.			MISSED APPROACH: Climb to 5140 then climbing right turn to 7500 direct OHAGY and hold.		
---------------	--	--	--	--	--

ATIS 125.25	DENVER APP CON ★ 120.1 290.5	PUEBLO TOWER ★ 119.1 (CTAF) 0 257.8	GND CON 121.9	CLNC DEL 120.9	UNICOM 122.95
-----------------------	--	---	-------------------------	--------------------------	-------------------------

Procedure NA for arrivals at STANO on V244 westbound.

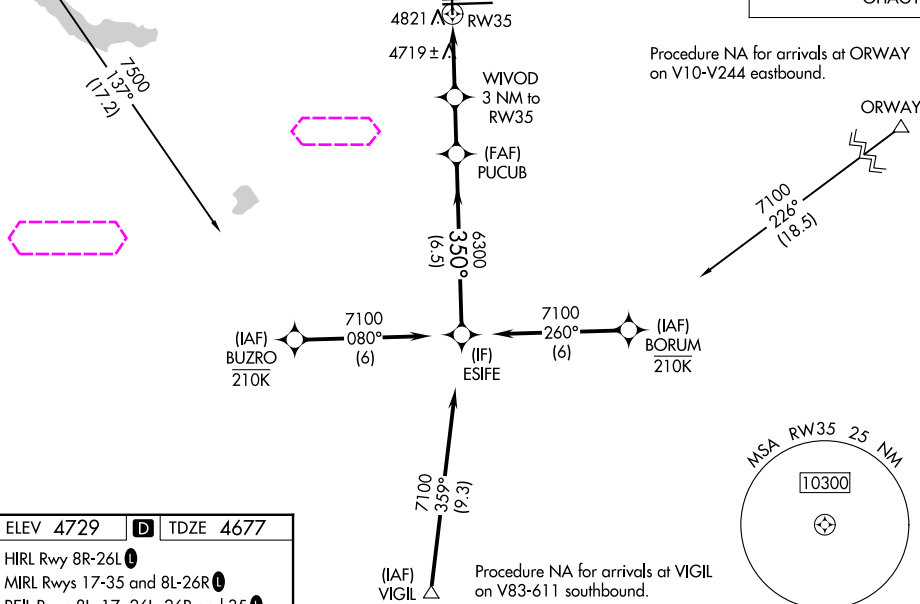
△ STANO

MISSED APCH FIX



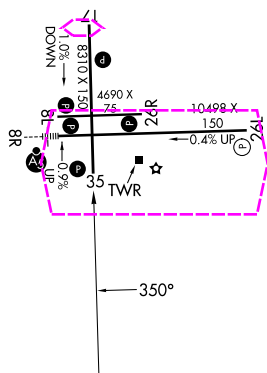
Procedure NA for arrivals at ORWAY on V10-V244 eastbound.

ORWAY



ELEV 4729 **D** TDZE 4677

HIRL Rwy 8R-26L
MIRL Rwy 17-35 and 8L-26R
REIL Rwy 8L, 17, 26L, 26R and 35



5140		7500		OHAGY	
↑		↶		✧	
RW35		WIVOD 3 NM to RW35		PUCUB	
1 NM to RW35		≤ 3.00° TCH 45		ESIFE	
5640		6300		7100	
-1 NM		2 NM		6.5 NM	
CATEGORY	A	B	C	D	
LP MDA	5020-1 343 (300-1)				
LNAV MDA	5120-1	443 (400-1)	5120-1½	443 (400-1½)	
CIRCLING	5340-1	611 (700-1)	5580-2½ 851 (900-2½)	5800-3 1071 (1100-3)	

PUEBLO, COLORADO

Orig-C 08SEP22

38°17'N-104°30'W

PUEBLO MEML (PUB)

RNAV (GPS) RWY 35

SW-1, 07 AUG 2025 to 04 SEP 2025

SW-1, 07 AUG 2025 to 04 SEP 2025