

SW-1, 10 JUL 2025 to 07 AUG 2025

PUEBLO, COLORADO

AL-334 (FAA)

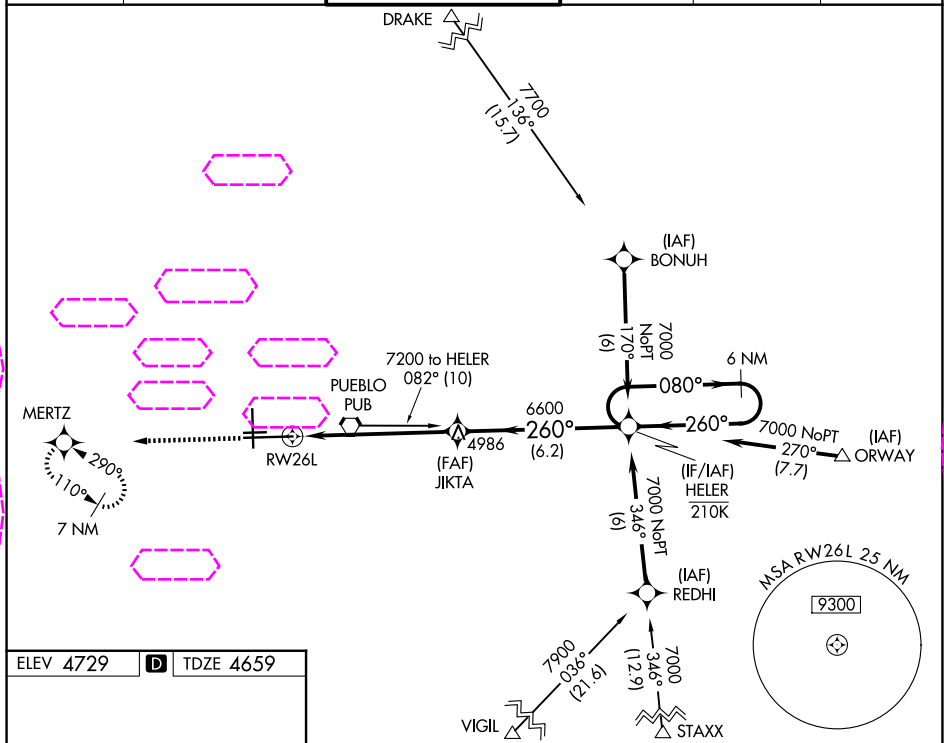
25219

WAAS CH 53531 W26A	APP CRS 260°	Rwy Ldg TDZE 4659 Apt Elev 4729
--	------------------------	---

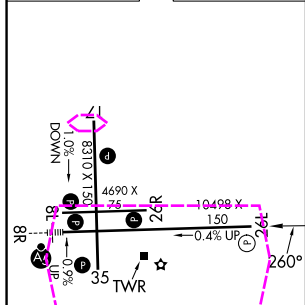
RNAV (GPS) RWY 26L

PUEBLO MEML (PUB)

RNP APCH-GPS. ⚠ For uncompensated Baro-VNAV systems, LNAV/VNAV NA below -22°C or above 54°C.			MISSED APPROACH: Climb to 7000 direct MERTZ and hold.		
ATIS 125.25	DENVER APP CON ★ 120.1 290.5	PUEBLO TOWER ★ 119.1 (CTAF) 0 257.8	GND CON 121.9	CLNC DEL 120.9	UNICOM 122.95



ELEV 4729	D	TDZE 4659
-----------	---	-----------



7000 ↑		MERTZ 		HELER		6 NM Holding Pattern			
*LNAV only		*1.4 NM to RW26L		JIKTA		080° → ← 260° 7000			
		RW26L		6600		GP 3.00° TCH 60			
CATEGORY		A		B		C		D	
LPV DA		4859-3/4 200 (200-3/4)							
LNAV/ VNAV DA		4979-1 320 (300-1)							
LNAV MDA		5100-1 441 (400-1)				5100-1 3/8 441 (400-1 3/8)			
CIRCLING		5340-1 611 (700-1)				5580-2 1/2 851 (900-2 1/2)		5800-3 1071 (1100-3)	

HIRL Rwy 8R-26L
MRL Rwy 17-35 and 8L-26R
REIL Rwy 8L, 17, 26L, 26R and 35

PUEBLO, COLORADO

PUEBLO MEML (PUB)

Amdt 1B 08SEP22

38°17'N-104°30'W

RNAV (GPS) RWY 26L

SW-1, 07 AUG 2025 to 04 SEP 2025

SW-1, 07 AUG 2025 to 04 SEP 2025