

PUEBLO, COLORADO

AL-334 (FAA)

25051

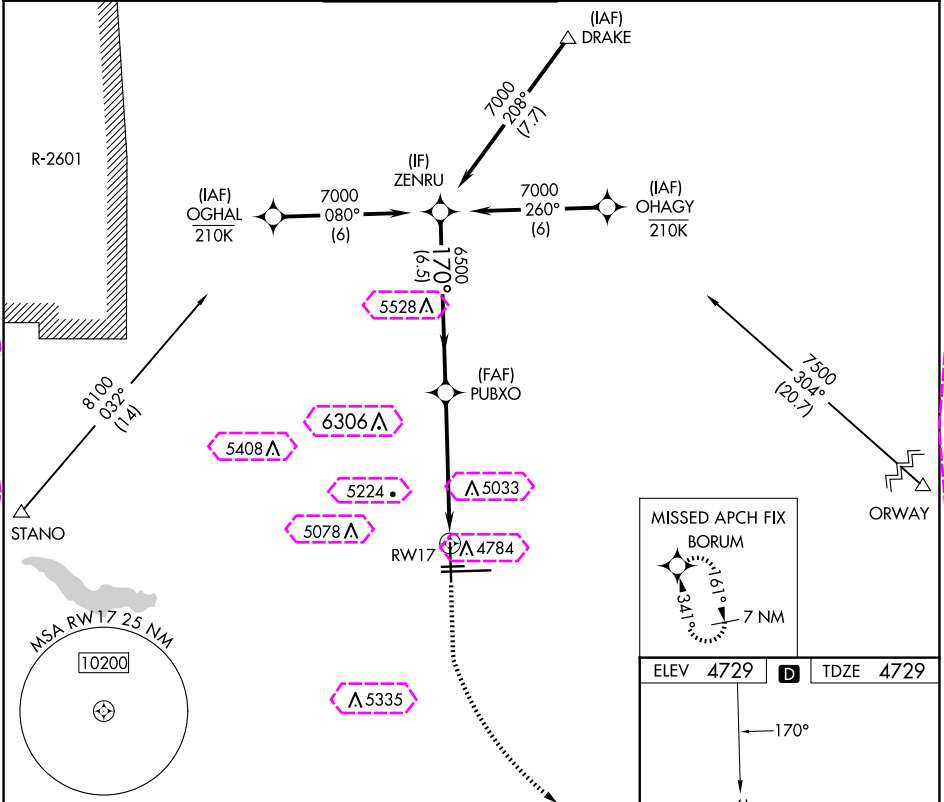
APP CRS	Rwy Idg	8308
170°	TDZE	4729
	Apt Elev	4729

# RNAV (GPS) RWY 17

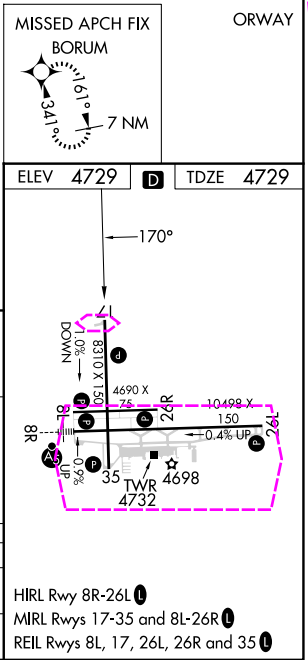
PUEBLO MEML (PUB)

RNP APCH-GPS.	MISSED APPROACH: Climb to 6000 then climbing left turn to 7500 direct BORUM and hold.
⚠ Rwy 17 helicopter reduction below ¾ SM NA.	

ATIS 125.25	DENVER APP CON ★ 120.1 290.5	PUEBLO TOWER ★ 119.1 (CTAF) 257.8	GND CON 121.9	CLNC DEL 120.9	UNICOM 122.95
----------------	---------------------------------	--------------------------------------	------------------	-------------------	------------------



				ZENRU				VGSi and descent angles not coincident (VGSi Angle 3.00/TCH 54).				6000		7500		BORUM	
7000				170°				PUBXO				2.7 NM to RW17					
6500				3.00° TCH 50				RW17									
6.5 NM				2.7 NM				2.7 NM									
CATEGORY	A				B				C				D				
LNAV MDA	5640-1¼ 911 (1000-1¼)								5640-2½ 911 (1000-2½)								
CIRCLING	5640-1¼ 911 (1000-1¼)								5640-2¾ 911 (1000-2¾)				5800-3 1071 (1100-3)				



PUEBLO, COLORADO  
Orig-B 08SEP22

38°17'N-104°30'W

# RNAV (GPS) RWY 17

SW-1, 10 JUL 2025 to 07 AUG 2025

SW-1, 10 JUL 2025 to 07 AUG 2025

PUEBLO, COLORADO

AL-334 (FAA)

25219

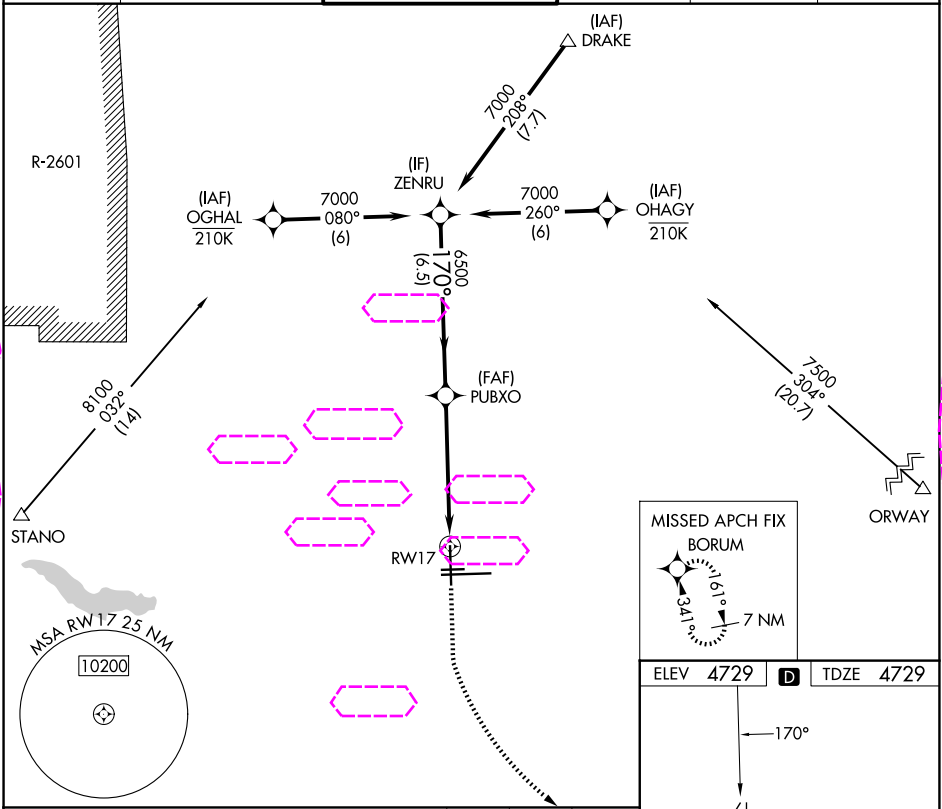
APP CRS	Rwy Ldg	8308
170°	TDZE	4729
	Apt Elev	4729

# RNAV (GPS) RWY 17

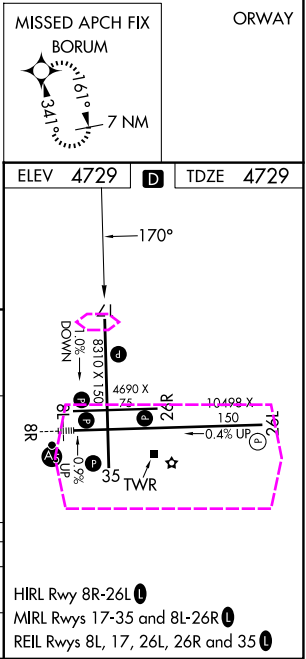
PUEBLO MEML (PUB)

RNP APCH-GPS.	MISSED APPROACH: Climb to 6000 then climbing left turn to 7500 direct BORUM and hold.
Rwy 17 helicopter reduction below ¾ SM NA.	

ATIS 125.25	DENVER APP CON ★ 120.1 290.5	PUEBLO TOWER ★ 119.1 (CTAF) 257.8	GND CON 121.9	CLNC DEL 120.9	UNICOM 122.95
----------------	---------------------------------	--------------------------------------	------------------	-------------------	------------------



<p>ZENRU</p> <p>7000</p>				<p>VGSI and descent angles not coincident (VGSI Angle 3.00/TCH 54).</p> <p>PUBXO</p> <p>6500</p> <p>170°</p> <p>3.00°</p> <p>TCH 50</p> <p>2.7 NM to RW17</p> <p>6.5 NM</p> <p>2.7 NM</p> <p>2.7 NM</p>				<p>6000</p> <p>7500</p> <p>BORUM</p>			
CATEGORY				A		B		C		D	
LNAV MDA				5640-1¼ 911 (1000-1¼)				5640-2½ 911 (1000-2½)			
CIRCLING				5640-1¼ 911 (1000-1¼)				5640-2¾ 911 (1000-2¾)		5800-3 1071 (1100-3)	



PUEBLO, COLORADO

Orig-B 08SEP22

38°17'N-104°30'W

PUEBLO MEML (PUB)

# RNAV (GPS) RWY 17