

ILS or LOC RWY 8R

PUEBLO MEML (PUB)

LOC I-PUB	APP CRS	Rwy Idg	10496
109.5	080°	TDZE	4671
		Apt Elev	4729

DME required.

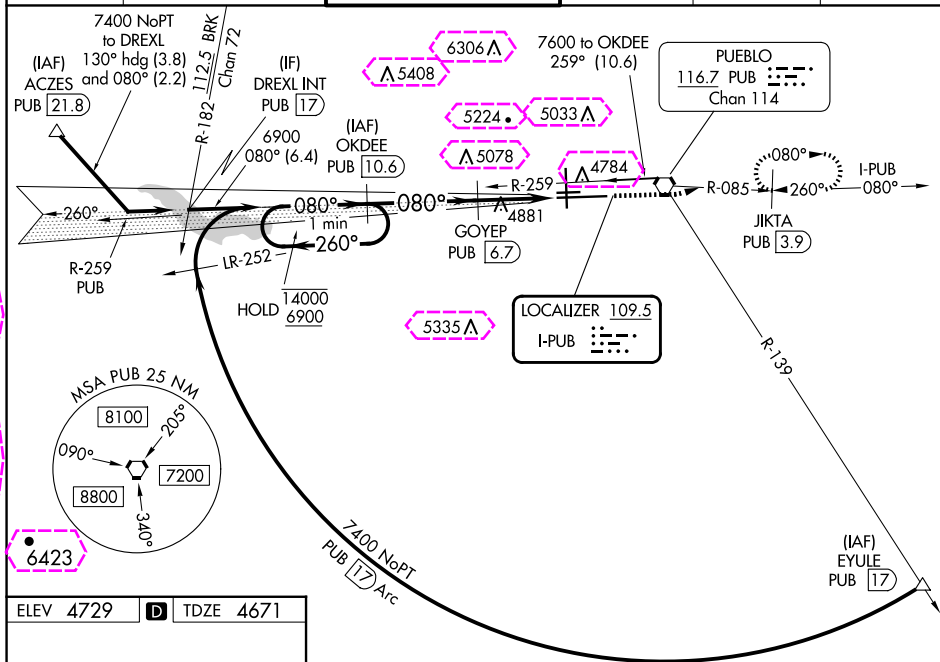
T Circling NA for Cat E west of Rwy 17-35. Autopilot coupled approach NA below 4950. Procedure turn NA for Cat E aircraft. DME from PUB VORTAC, simultaneous reception of I-PUB and PUB DME required. For inop ALS, increase S-ILS 8R Cat E visibility to $\frac{3}{4}$ SM and S-LOC 8R Cat E visibility to $1\frac{1}{2}$ SM.

MALSR

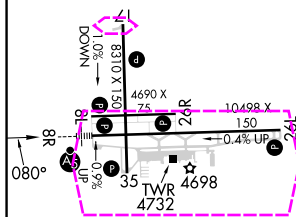


MISSED APPROACH: Climb to 7000 on heading 070° and on PUB VORTAC R-085 to JIKTA/ PUB 3.9 DME and hold, continue climb-in-hold to 7000.

ATIS 125.25	DENVER APP CON ★ 120.1 290.5	PUEBLO TOWER ★ 119.1 (CTAF) 0 257.8	GND CON 121.9	CLNC DEL 120.9	UNICOM 122.95
-----------------------	--	---	-------------------------	--------------------------	-------------------------



ELEV 4729	D	TDZE 4671
-----------	----------	-----------

HIRL Rwy 8R-26L **L**MIRL Rwy 17-35 and 8L-26R **L**REIL Rwy's 8L, 17, 26L, 26R and 35 **L**

38°17'N-104°30'W

PUEBLO MEML (PUB)

ILS or LOC RWY 8R

ILS or LOC RWY 8R

PUEBLO MEML (PUB)

LOC I-PUB	APP CRS	Rwy Ldg	10496
<u>109.5</u>	080°	TDZE	4671
		Apt Elev	4729

DME required.

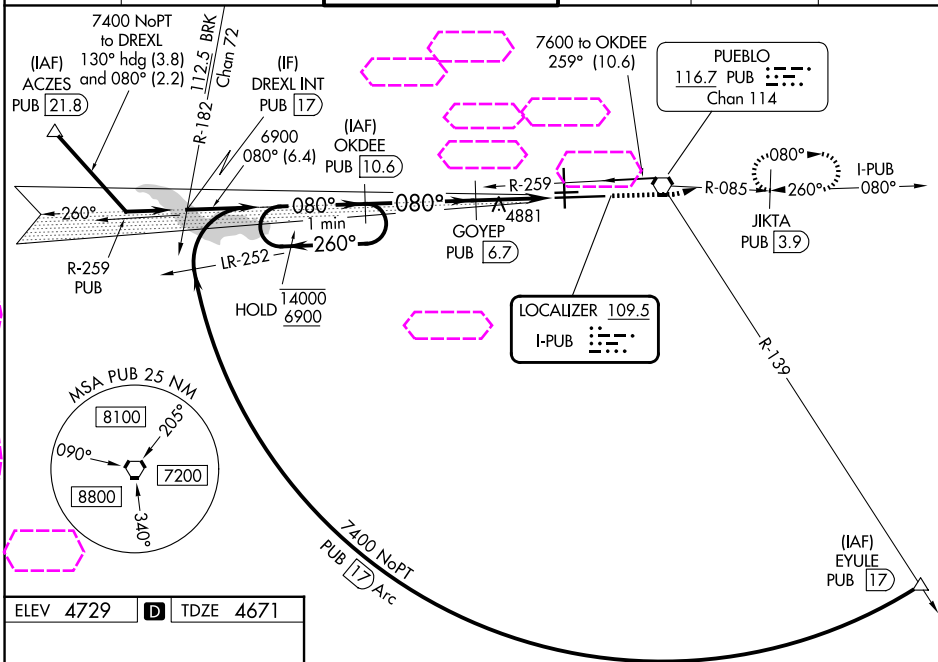
T Circling NA for Cat E west of Rwy 17-35. Autopilot coupled approach
A NA below 4950. Procedure turn NA for Cat E aircraft. DME from PUB
VORTAC, simultaneous reception of I-PUB and PUB DME required. For
inop ALS, increase S-ILS 8R Cat E visibility to $\frac{3}{4}$ SM and S-LOC 8R
Cat E visibility to $\frac{1}{2}$ SM.

MALSR

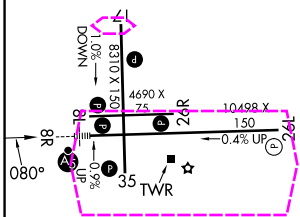


MISSED APPROACH: Climb to 7000 on heading 070° and on PUB VORTAC R-085 to JIKTA/PUB 3.9 DME and hold, continue climb-in-hold to 7000.

ATIS 125.25	DENVER APP CON ★ 120.1 290.5	PUEBLO TOWER ★ 119.1 (CTAF) 0 257.8	GND CON 121.9	CLNC DEL 120.9	UNICOM 122.95
-----------------------	--	---	-------------------------	--------------------------	-------------------------



ELEV 4729	D	TDZE 4671
-----------	----------	-----------

HIRL Rwy 8R-26L **L**MIRL Rwy 17-35 and 8L-26R **L**

REIL Rwys 8L, 17, 26L, 26R and 35 **L**

38°17'N-104°30'W

PUEBLO MEML (PUB)

ILS or LOC RWY 8R