

SW-1, 10 JUL 2025 to 07 AUG 2025

ILS or LOC RWY 26L

PUEBLO MEML (PUB)

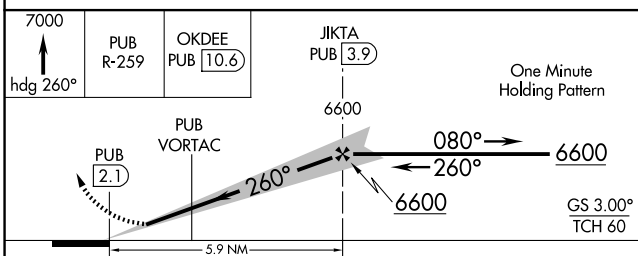
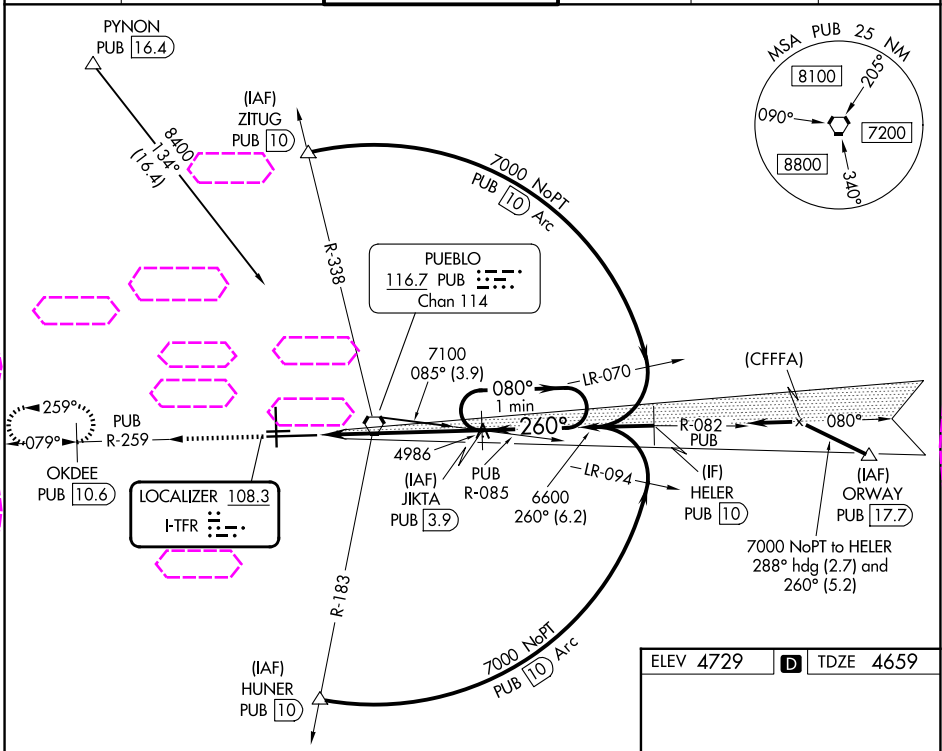
LOC I-TFR <u>108.3</u>	APP CRS 260°	Rwy Ldg TDZE Apt Elev	10496 4659 4729
----------------------------------	------------------------	-----------------------------	--

DME required. RADAR required for procedure entry at PYNON.

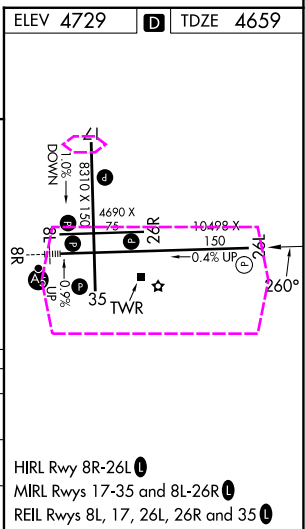
T
A DME from PUB VORTAC, simultaneous reception of I-TFR and PUB DME required.

MISSED APPROACH: Climb to 7000 on heading 260° and on PUB VORTAC R-259 to OKDEE/PUB 10.6 DME and hold.

ATIS 125.25	DENVER APP CON ★ 120.1 290.5	PUEBLO TOWER ★ 119.1 (CTAF) 0 257.8	GND CON 121.9	CLNC DEL 120.9	UNICOM 122.95
-----------------------	--	---	-------------------------	--------------------------	-------------------------



CATEGORY	A	B	C	D
S-ILS 26L	4859- ³ / ₄ 200 (200- ³ / ₄)			
S-LOC 26L	5160-1 501 (500-1)		5160-1 ³ / ₈ 501 (500-1 ³ / ₈)	
CIRCLING	5340-1 611 (700-1)		5580-2 ¹ / ₂ 851 (900-2 ¹ / ₂)	5800-3 1071 (1100-3)



PUEBLO, COLORADO

Amdt 1A 08SEP22

38°17'N-104°30'W

PUEBLO MEML (PUB)

ILS or LOC RWY 26L

SW-1, 07 AUG 2025 to 04 SEP 2025

SW-1, 07 AUG 2025 to 04 SEP 2025