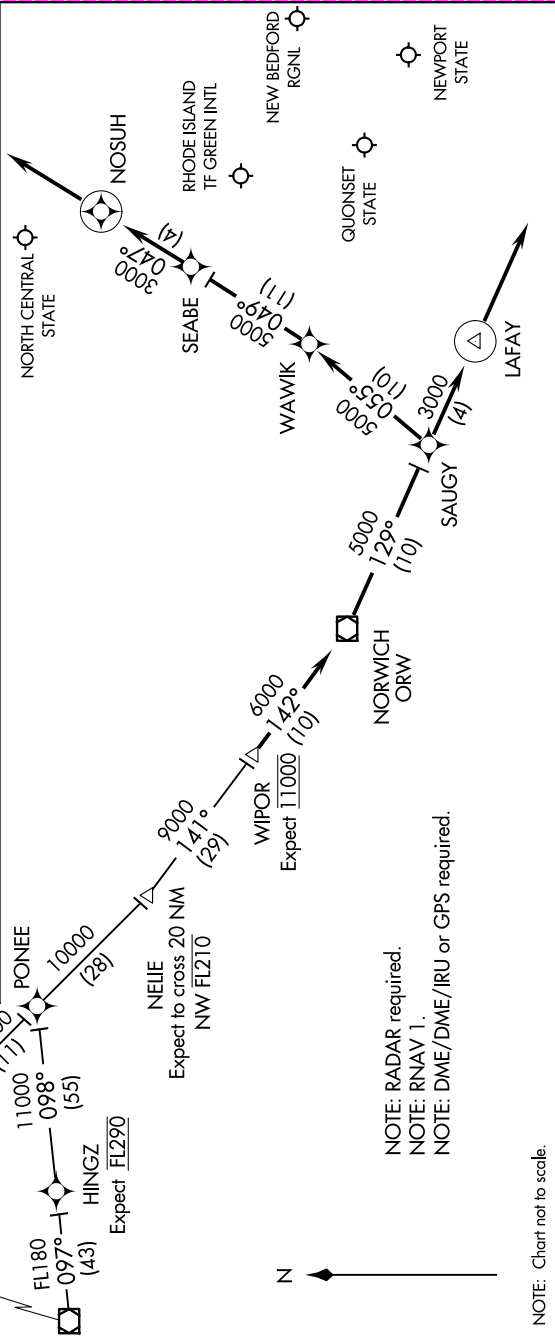


NE-1, 10 JUL 2025 to 07 AUG 2025

ARRIVAL ROUTE DESCRIPTION

ALBANY TRANSITION (ALB.WIPOR3):  
HANCOCK TRANSITION (HNK.WIPOR3):  
HINGZ TRANSITION (HINGZ.WIPOR3):  
From WIPOR on track 142° to ORW VOR/DME, then on track 129° to SAUGY.  
Landing KPVD Rwy 5, 34: From SAUGY on track 129° to LAFAY, then on track 129°.  
Expect radar vectors to final approach course.  
Landing KPVD Rwy 16, 23: From SAUGY on track 055° to WAWIK, then on track 049° to SEABE.  
Then on track 047° to NOSUH, then on track 047°. Expect radar vectors to final approach course.  
Landing KOQU, KUIU, KEWB, all rwy's: From WIPOR on track 142° to ORW VOR/DME, then on track 129° to SAUGY, then on track 129° to LAFAY, then on track 129°. Expect radar vectors to destination airport and final approach course.  
Landing KSFZ all rwy's: From WIPOR on track 142° to ORW VOR/DME, then on track 129° to SAUGY, then on track 055° to WAWIK, then on track 049° to SEABE, then on track 047° to NOSUH, then on track 047°. Expect radar vectors to final approach course.



NE-1, 10 JUL 2025 to 07 AUG 2025

## WIPOR FOUR ARRIVAL (RNAV)

## PROVIDENCE, RHODE ISLAND

## ARRIVAL ROUTE DESCRIPTION

ALBANY TRANSITION (ALB.WIPOR4)  
ARRKK TRANSITION (ARRKK.WIPOR4)  
MEMMS TRANSITION (MEMMS.WIPO

PVD: From WIPOR on track 142° to YANTC.

LANDING PVD RUNWAYS 5, 34: From YANTC on track 129° to cross DELSS at or above 2700, then on track 129° to cross LAFAY at or above 2100, then on track 129°. Expect RADAR vectors to final approach course.

LANDING PVD RUNWAYS 16, 23: From YANTC on track 129° to SAUGY, then on track 055° to WAWIK, then on track 049° to cross SEABE at or above 5000, then on track 049°. Expect RADAR vectors to final approach course.

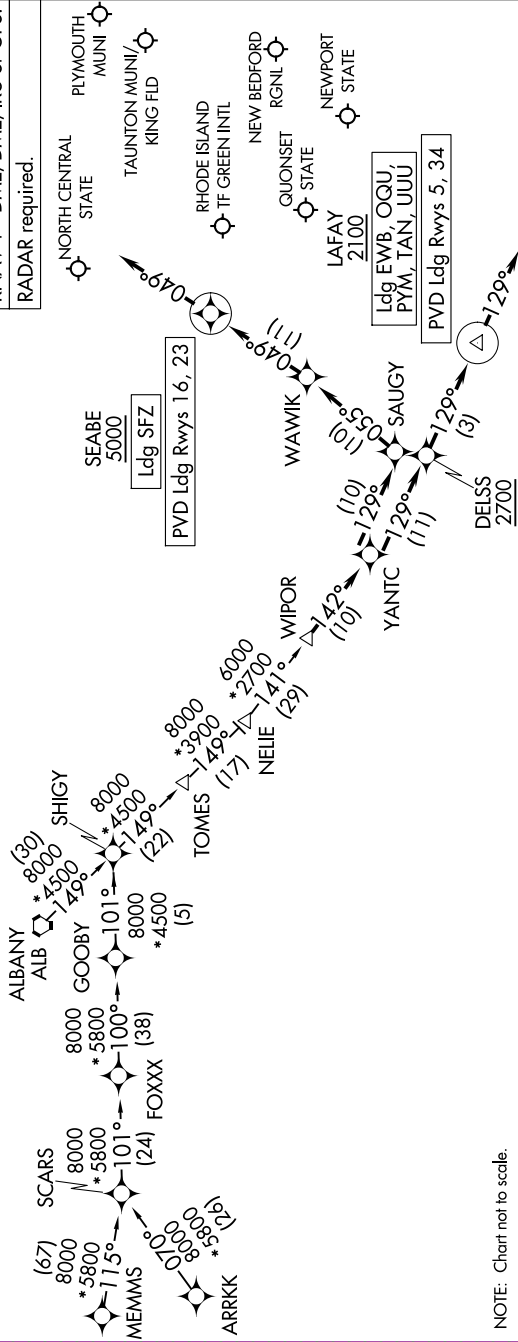
LANDING TAN/EWB/UUU/PYM/OQU: From WIPOR on track 142° to YANTC, then on track 129° to cross DELSS at or above 2700, then on track 129° to cross LAFAY at or above 2100, then on track 129°.

Expect RADAR vectors to final approach course.

to WAWIK, then on track 049° to cross SEABE at or above 5000, then on track 049° to WIPOR on track 142° to YANTC, then on track 129° to SAUGY, then on track 055° to WANDING SFZ.

Expect RADAR vectors to final approach course.

|                              |
|------------------------------|
| RNAV 1 - DME/DME/IRU or GPS. |
| RADAR required.              |



NOTE: Chart not to scale.

## WIPOR FOUR ARRIVAL (RNAV)

(WIPOR.WIPOR4) 07AUG25

## PROVIDENCE, RHODE ISLAND

NE-1, 07 AUG 2025 to 04 SEP 2025