

PHILADELPHIA, PENNSYLVANIA

AL-320 (FAA)

25163

LOC/DME I-MYY 108.75 Chan 24 (Y)	APP CRS 171°	Rwy Ldg TDZE 11 Apt Elev 36
--	------------------------	---

ILS Z or LOC RWY 17
PHILADELPHIA INTL (PHL)

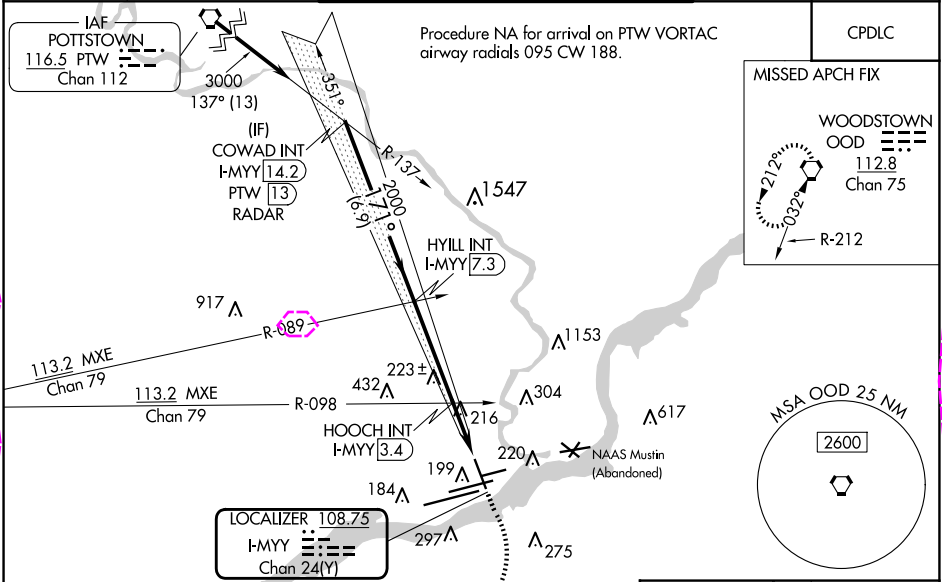
DME or RADAR required.

⚠ Inop table does not apply to S-ILS 17 all Cats. Rwy 17 helicopter visibility reduction below RVR 4000 NA. For inop ALS, increase S-LOC 17 Cat A visibility to RVR 5500, Cat B visibility to 1¼ SM, and Cat C/D visibility to 2 SM. HOOCH fix minimums: Increase S-LOC 17 Cat A/B visibility to RVR 5500 and Cat C/D visibility to 1¾ SM. Circling NA to Rwy 8.

MALSF

MISSED APPROACH: Climb to 2000 then climbing right turn to 3000 direct OOD VORTAC and hold.

D-ATIS ARR 133.4 DEP 135.925	PHILADELPHIA APP CON 124.35 319.15	PHILADELPHIA TOWER 118.5 327.05 (Rwys 9L/27R, 8/26 and 17/35) 135.1 327.05 (Rwy 9R/27L)	GND CON 121.9 348.6	CLNC DEL 118.85 348.6
--	--	---	-------------------------------	---------------------------------



COWAD INT I-MYY 14.2 PTW 13 RADAR	HYILL INT I-MYY 7.3	HOOCH INT I-MYY 3.4	I-MYY 2.5	I-MYY 1.2	2000	OOD
3000	2000	2000	760			
6.9 NM	3.9 NM	0.9 NM	1.3 NM			
CATEGORY	A	B	C	D		
S-ILS 17		261/40	250 (300-¾)			
S-LOC 17	760/40 749 (800-¾)	760/55 749 (800-1)	760-1⅞ 749 (800-1½)	749 (800-1½)		
CIRCLING	760-1 724 (800-1)	760-1¼ 724 (800-1¼)	760-2 724 (800-2)	760-2¼ 724 (800-2¼)		
	HOOCH FIX MINIMUMS					
S-LOC 17	480/40	469 (500-¾)	480/60	469 (500-1¼)		
CIRCLING	540-1 504 (600-1)	600-1 564 (600-1)	620-1½ 584 (600-1½)	720-1½ 684 (700-1½)		
	FAF to MAP 6.1 NM					
	Knots	60	90	120	150	180
	Min:Sec	6:06	4:04	3:03	2:26	2:02

PHILADELPHIA, PENNSYLVANIA
Amdt 9 12JUN25

39°52'N-75°14'W

PHILADELPHIA INTL (PHL)
ILS Z or LOC RWY 17

PHILADELPHIA, PENNSYLVANIA

AL-320 (FAA)

25219

LOC/DME I-MYY 108.75 Chan 24 (Y)	APP CRS 171°	Rwy Ldg TDZE 11 Apt Elev 36
--	------------------------	---

ILS Z or LOC RWY 17
PHILADELPHIA INTL (PHL)

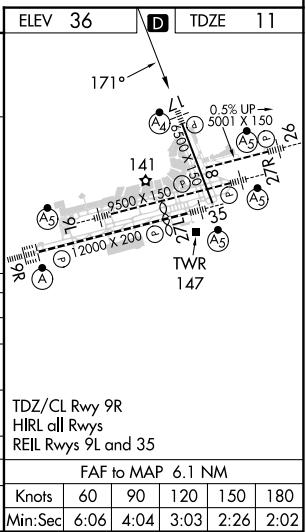
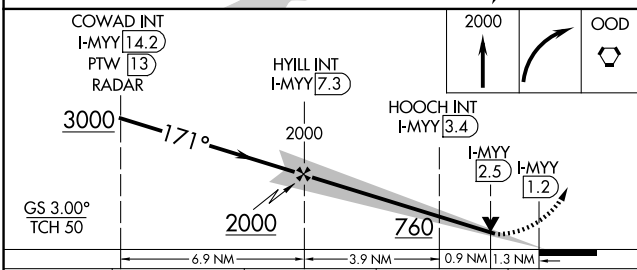
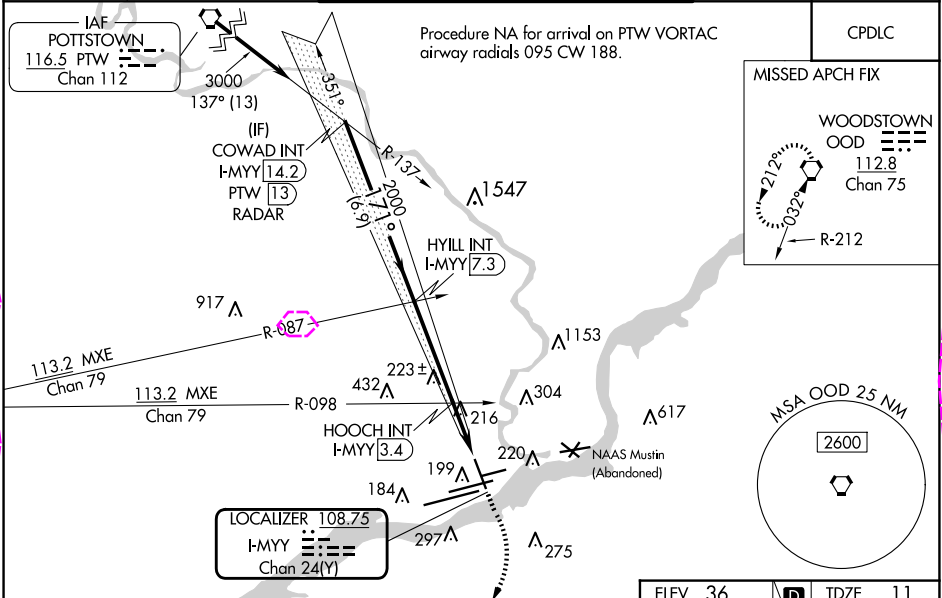
DME or RADAR required.

⚠ Inop table does not apply to S-ILS 17 all Cats. Rwy 17 helicopter visibility reduction below RVR 4000 NA. For inop ALS, increase S-LOC 17 Cat A visibility to RVR 5500, Cat B visibility to 1¼ SM, and Cat C/D visibility to 2 SM. HOOCH fix minimums: Increase S-LOC 17 Cat A/B visibility to RVR 5500 and Cat C/D visibility to 1¾ SM. Circling NA to Rwy 8.

MALSF

MISSED APPROACH: Climb to 2000 then climbing right turn to 3000 direct OOD VORTAC and hold.

D-ATIS ARR 133.4 DEP 135.925	PHILADELPHIA APP CON 124.35 319.15	PHILADELPHIA TOWER 118.5 327.05 (Rwys 9L/27R, 8/26 and 17/35) 135.1 327.05 (Rwy 9R/27L)	GND CON 121.9 348.6	CLNC DEL 118.85 348.6
--	--	---	-------------------------------	---------------------------------



CATEGORY	A	B	C	D
S-ILS 17	261/40 250 (300-¾)			
S-LOC 17	760/40 749 (800-¾)	760/55 749 (800-1)	760-1⅞ 749 (800-1⅞)	
CIRCLING	760-1 724 (800-1)	760-1¼ 724 (800-1¼)	760-2 724 (800-2)	760-2¼ 724 (800-2¼)
HOOCH FIX MINIMUMS				
S-LOC 17	480/40 540-1	469 (500-¾) 600-1	480/60 620-1½	469 (500-1¼) 720-1½
CIRCLING	504 (600-1)	564 (600-1)	584 (600-1½)	684 (700-1½)

PHILADELPHIA, PENNSYLVANIA
Amdt 9 12JUN25

39°52'N-75°14'W

PHILADELPHIA INTL (PHL)
ILS Z or LOC RWY 17

NE-4, 07 AUG 2025 to 04 SEP 2025

NE-4, 07 AUG 2025 to 04 SEP 2025