

PHILADELPHIA, PENNSYLVANIA

AL-320 (FAA)

25163

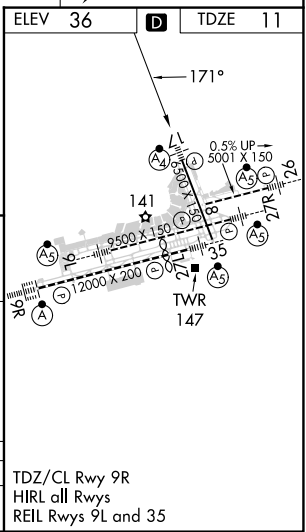
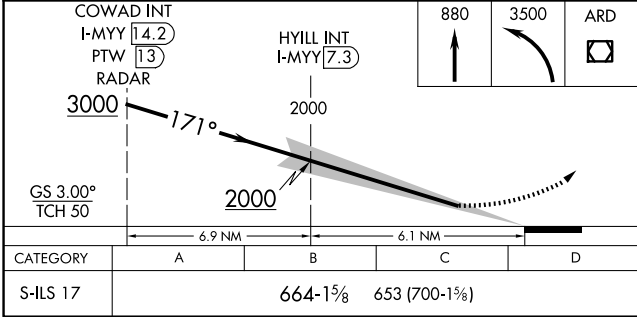
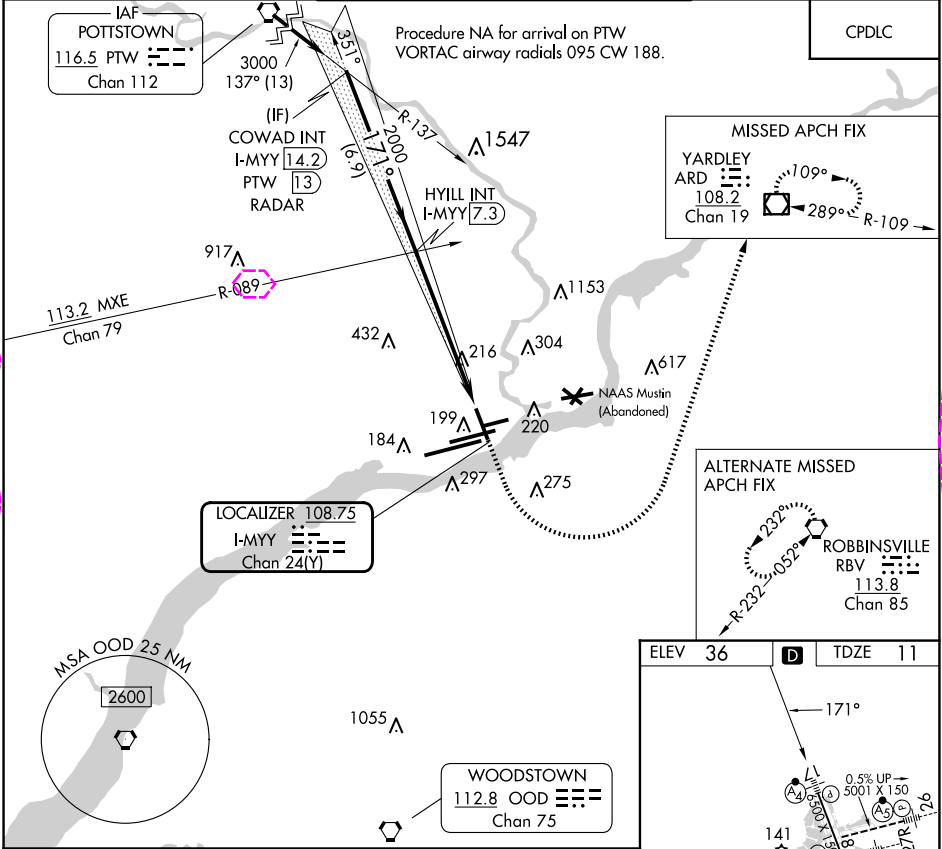
LOC/DME I-MYY	APP CRS	Rwy Ldg	6500
108.75	171°	TDZE	11
Chan 24(Y)		Apt Elev	36

ILS V RWY 17 (CONVERGING)

PHILADELPHIA INTL (PHL)

RADAR required.	MALSF	MISSED APPROACH: Climb to 880 then climbing left turn to 3500 direct ARD VOR/DME and hold.
Simultaneous approach authorized. Rwy 17 helicopter visibility reduction below 3/4 SM NA.		

D-ATIS	PHILADELPHIA APP CON	PHILADELPHIA TOWER	GND CON	CLNC DEL
ARR 133.4	124.35 319.15	118.5 327.05 (Rwys 9L/27R, 8/26 and 17/35)	121.9 348.6	118.85 348.6
DEP 135.925		135.1 327.05 (Rwy 9R/27L)		



NE-4, 10 JUL 2025 to 07 AUG 2025

NE-4, 10 JUL 2025 to 07 AUG 2025

PHILADELPHIA, PENNSYLVANIA

AL-320 (FAA)

25219

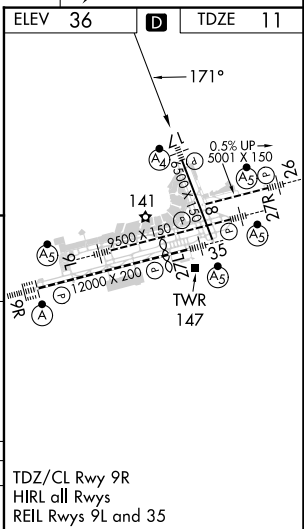
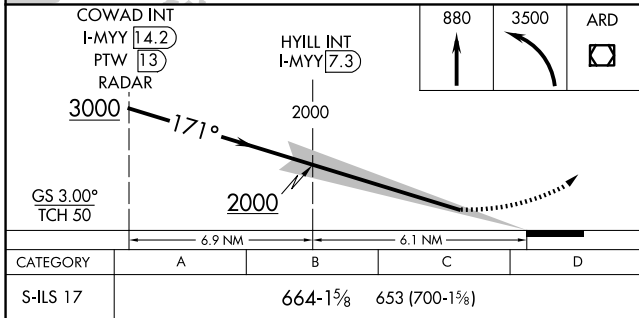
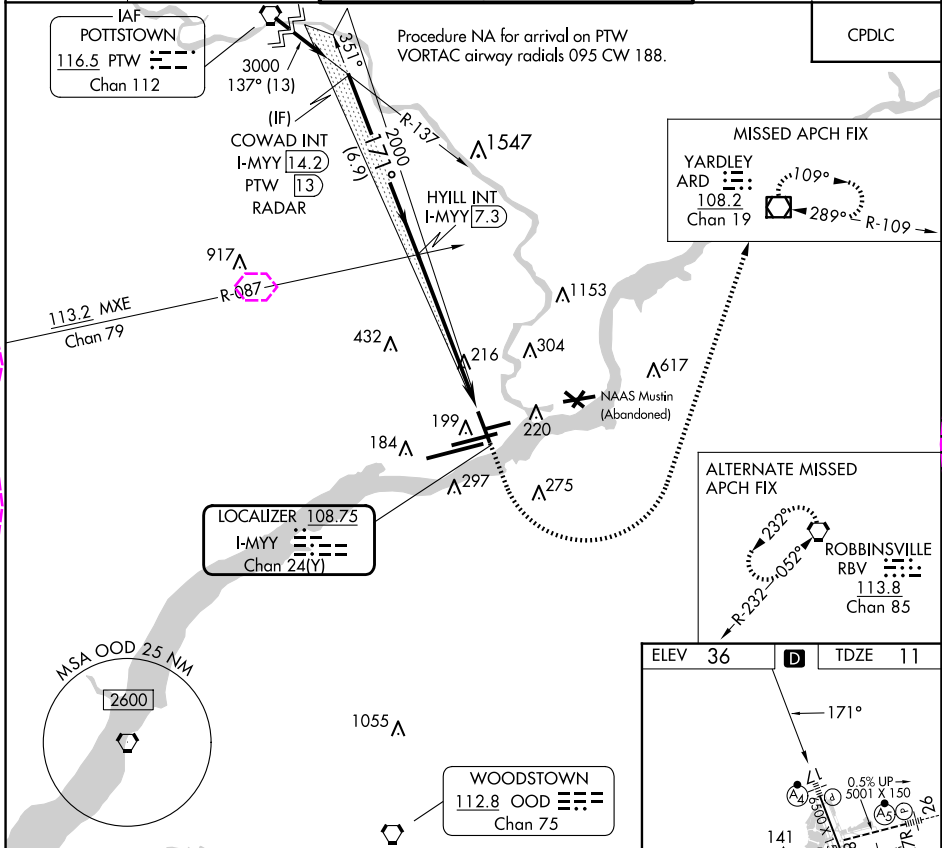
LOC/DME I-MYY	APP CRS	Rwy Ldg	6500
108.75	171°	TDZE	11
Chan 24(Y)		Apt Elev	36

ILS V RWY 17 (CONVERGING)

PHILADELPHIA INTL (PHL)

RADAR required.	MALSF	MISSED APPROACH: Climb to 880 then climbing left turn to 3500 direct ARD VOR/DME and hold.
Simultaneous approach authorized. Rwy 17 helicopter visibility reduction below 3/4 SM NA.		

D-ATIS	PHILADELPHIA APP CON	PHILADELPHIA TOWER	GND CON	CLNC DEL
ARR 133.4	124.35 319.15	118.5 327.05 (Rwys 9L/27R, 8/26 and 17/35)	121.9 348.6	118.85 348.6
DEP 135.925		135.1 327.05 (Rwy 9R/27L)		



PHILADELPHIA, PENNSYLVANIA
Amdt 8 12JUN25

39°52'N-75°14'W

PHILADELPHIA INTL (PHL)

ILS V RWY 17 (CONVERGING)

NE-4, 07 AUG 2025 to 04 SEP 2025

NE-4, 07 AUG 2025 to 04 SEP 2025