

(TOLLZ2.TOLLZ) 24361

AL-305 (FAA)

EXEC (ORL)
ORLANDO, FLORIDA

TOLLZ TWO DEPARTURE (RNAV)

ORLANDO DEP CON

119.775 351.9

ATIS

127.25

CLNC DEL

128.45

CLNC DEL

125.225 (when twr closed)

GND CON

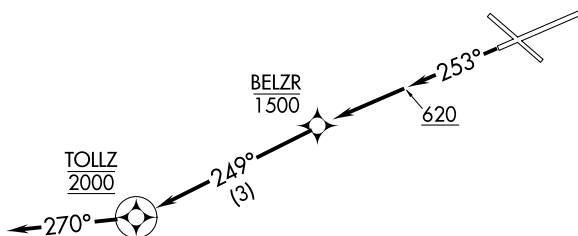
121.4 239.0

EXECUTIVE TOWER ★

118.7 239.0

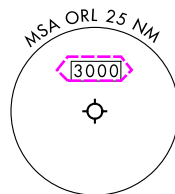
RNAV 1 - DME/DME/IRU or GPS required.

RADAR required.

TOP ALTITUDE:
2000

TAKEOFF MINIMUMS

Rwy 25: Standard with minimum climb of 500' per NM to 620.



NOTE: Chart not to scale.



DEPARTURE ROUTE DESCRIPTION

TAKEOFF RUNWAY 25: Climb on heading 253° to 620, then direct to cross BELZR at or below 1500, then on track 249° to cross TOLLZ at 2000, thence. . . .

. . . on heading 270°, maintain 2000. Expect clearance to filed altitude within 10 minutes after departure.

TOLLZ TWO DEPARTURE (RNAV)

(TOLLZ2.TOLLZ) 21MAR24

ORLANDO, FLORIDA
EXEC (ORL)

SE-3, 10 JUL 2025 to 07 AUG 2025

SE-3, 10 JUL 2025 to 07 AUG 2025

(TOLLZ2.TOLLZ) 25219

AL-305 (FAA)

ORLANDO EXEC (ORL)

ORLANDO, FLORIDA

TOLLZ TWO DEPARTURE (RNAV)

ORLANDO DEP CON

119.775 351.9

ATIS

127.25

CLNC DEL

128.45

CLNC DEL

125.225 (When twr closed)

GND CON

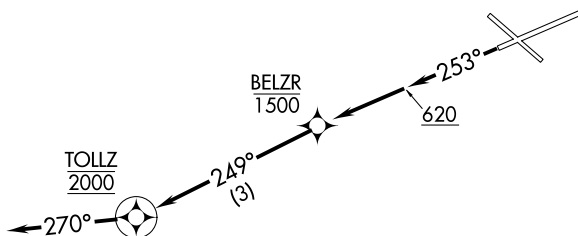
121.4 239.0

EXECUTIVE TOWER ★

118.7 239.0

RNAV 1 - DME/DME/IRU or GPS required.

RADAR required.

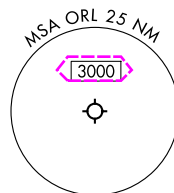
**TOP ALTITUDE:
2000**TOLLZ
2000BELZR
1500

620



(3)

270°

TAKEOFF MINIMUMS

Rwy 25: Standard with minimum climb of 500' per NM to 620.

NOTE: Chart not to scale.



DEPARTURE ROUTE DESCRIPTION

TAKEOFF RUNWAY 25: Climb on heading 253° to 620, then direct to cross BELZR at or below 1500, then on track 249° to cross TOLLZ at 2000, thence. . . .

. . . on heading 270°, maintain 2000. Expect clearance to filed altitude within 10 minutes after departure.

TOLLZ TWO DEPARTURE (RNAV)

(TOLLZ2.TOLLZ) 21MAR24

ORLANDO, FLORIDA

ORLANDO EXEC (ORL)

SE-3, 07 AUG 2025 to 04 SEP 2025

SE-3, 07 AUG 2025 to 04 SEP 2025