

(SHREK.SHREK2) 21336

AL-305 (FAA)

SHREK TWO ARRIVAL (RNAV)

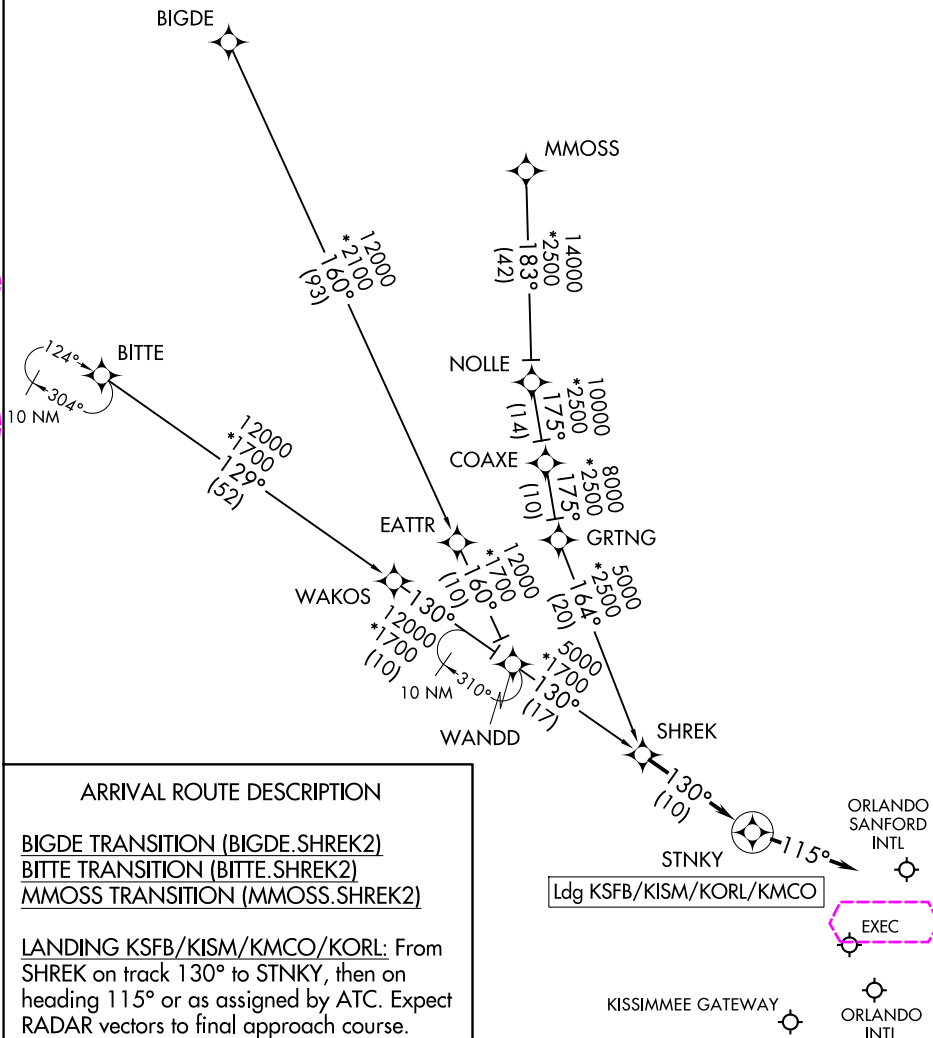
ORLANDO, FLORIDA

RNAV 1 - DME/DME/IRU or GPS.

RADAR required.

ORLANDO APP CON
134.05 339.8
JACKSONVILLE APP CON
128.675 263.05
ISM ATIS
128.775
MCO D-ATIS ARR
121.25
ORL ATIS
127.25
SFB ATIS
125.975

NOTE: Jets landing ISM and ORL, ATC assigned only.
NOTE: Turboprops and props only landing MCO.
NOTE: Landing all airports, expect RADAR vectors after STINKY.



NOTE: Chart not to scale.

SHREK TWO ARRIVAL (RNAV)

(SHREK.SHREK2) 02DEC21

ORLANDO, FLORIDA

SE-3, 10 JUL 2025 to 07 AUG 2025

SE-3, 10 JUL 2025 to 07 AUG 2025

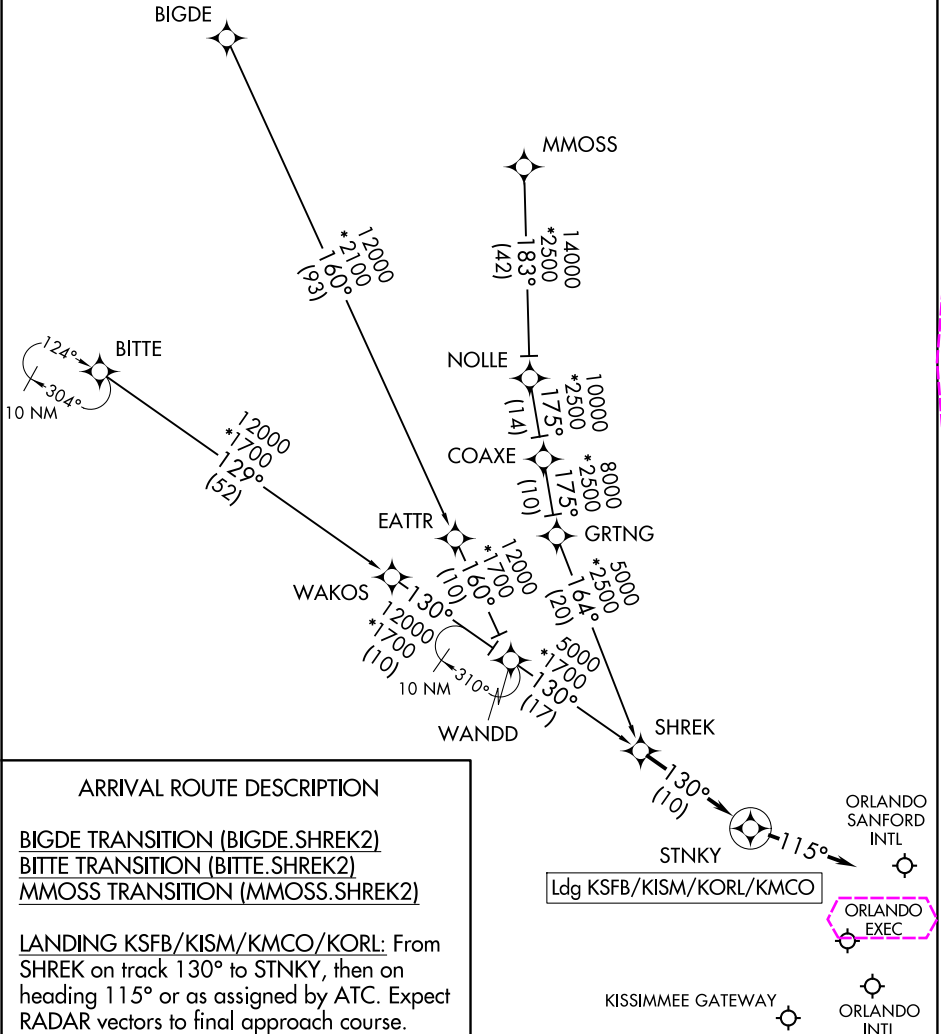
SHREK TWO ARRIVAL (RNAV)

RNAV 1 - DME/DME/IRU or GPS.

RADAR required.

ORLANDO APP CON
134.05 339.8
JACKSONVILLE APP CON
128.675 263.05
ISM ATIS
128.775
MCO D-ATIS ARR
121.25
ly. ORL ATIS
127.25
SFB ATIS
125.975

NOTE: Jets landing ISM and ORL, ATC assigned only.
NOTE: Turboprops and props only landing MCO.
NOTE: Landing all airports, expect RADAR vectors after STINKY.



NOTE: Chart not to scale.

SHREK TWO ARRIVAL (RNAV)

(SHREK.SHREK2) 02DEC21

ORLANDO, FLORIDA

SE-3, 07 AUG 2025 to 04 SEP 2025

SE-3, 07 AUG 2025 to 04 SEP 2025