

ORLANDO, FLORIDA

AL-305 (FAA)

24361

WAAS CH 58125 W25A	APP CRS 253°	Rwy Idg 6004 TDZE 113 Apt Elev 113
--	------------------------	---

RNAV (GPS) RWY 25

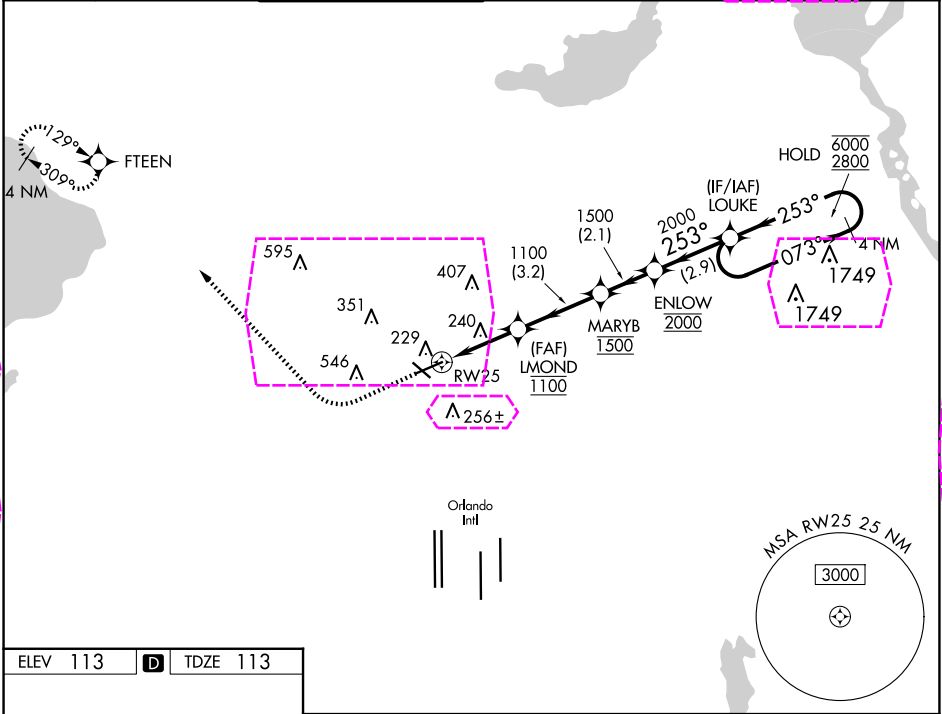
EXEC (ORL)

RNP APCH - GPS.

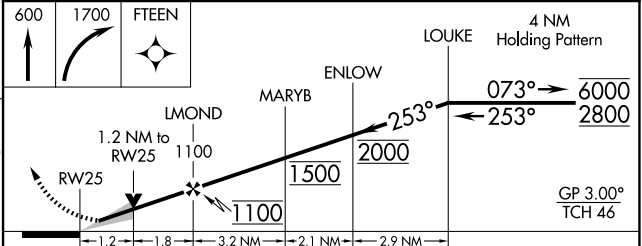
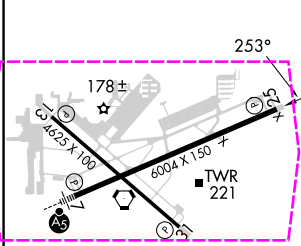
⚠ Circling Rwy 31 NA at night. For uncompensated Baro-VNAV systems, LNAV/VNAV NA below 2°C or above 54°C. In minimum visibility conditions, bright lights on highway ½ mile south of airport may be mistaken for runway lights.

MISSED APPROACH: Climb to 600 then climbing right turn to 1700 direct FTEEN and hold.

ATIS 127.25	ORLANDO APP CON 124.8 351.9	EXECUTIVE TOWER ★ 118.7 (CTAF) 239.0	GND CON 121.4 239.0	CLNC DEL 128.45	CLNC DEL 125.225 (when twr closed)	UNICOM 122.95
-----------------------	---------------------------------------	--	-------------------------------	---------------------------	---	-------------------------



ELEV 113	D	TDZE 113
----------	----------	----------



CATEGORY	A	B	C	D
LPV DA	313-¾ 200 (200-¾)			
LNAV/VNAV DA	390-⅞ 277 (300-⅞)			
LNAV MDA	500-1	387 (400-1)	500-1¼	387 (400-1¼)
CIRCLING	580-1	680-1	860-2¼	860-2½
	467 (500-1)	567 (600-1)	747 (800-2¼)	747 (800-2½)

ORLANDO, FLORIDA
Amdt 4 03NOV22

28°33'N-81°20'W

RNAV (GPS) RWY 25

EXEC (ORL)

ORLANDO, FLORIDA

AL-305 (FAA)

25219

WAAS CH 58125 W25A	APP CRS 253°	Rwy Ldg TDZE 113 Apt Elev 113
--	------------------------	---

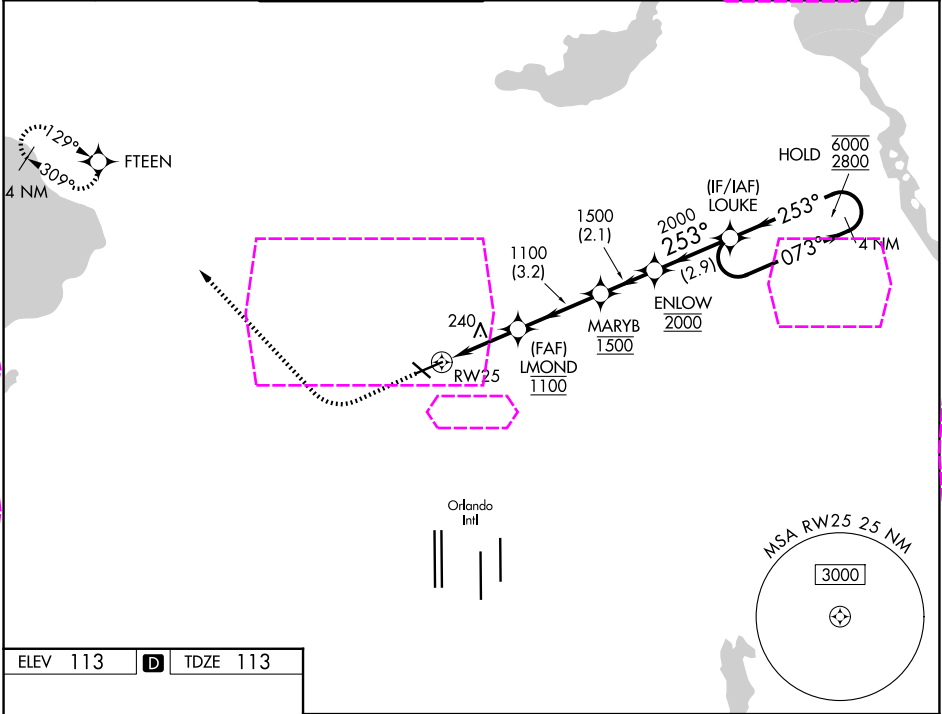
RNAV (GPS) RWY 25
ORLANDO EXEC (ORL)

RNP APCH - GPS.

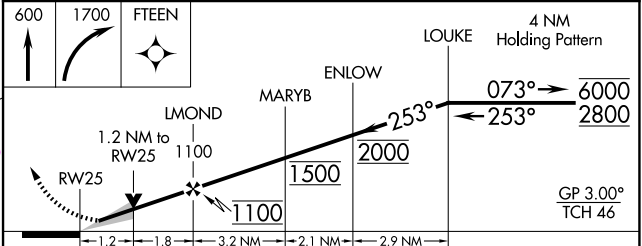
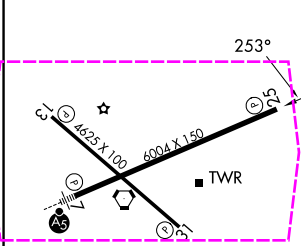
⚠ Circling Rwy 31 NA at night. For uncompensated Baro-VNAV systems, LNAV/VNAV NA below 2°C or above 54°C. In minimum visibility conditions, bright lights on highway ½ mile south of airport may be mistaken for runway lights.

MISSED APPROACH: Climb to 600 then climbing right turn to 1700 direct FTEEN and hold.

ATIS 127.25	ORLANDO APP CON 124.8 351.9	EXECUTIVE TOWER ★ 118.7 (CTAF) 239.0	GND CON 121.4 239.0	CLNC DEL 128.45	CLNC DEL 125.225 (When twr closed)	UNICOM 122.95
-----------------------	---------------------------------------	--	-------------------------------	---------------------------	---	-------------------------



ELEV 113	D	TDZE 113
----------	----------	----------



CATEGORY	A	B	C	D
LPV DA	313-¾	200 (200-¾)		
LNAV/VNAV DA	390-⅞	277 (300-⅞)		
LNAV MDA	500-1	387 (400-1)	500-1¼	387 (400-1¼)
CIRCLING	580-1 467 (500-1)	680-1 567 (600-1)	860-2¼ 747 (800-2¼)	860-2½ 747 (800-2½)

ORLANDO, FLORIDA
Amdt 4 03NOV22

28°33'N-81°20'W

ORLANDO EXEC (ORL)
RNAV (GPS) RWY 25