

ORLANDO, FLORIDA

AL-305 (FAA)

24361

LOC I-ORL	APP CRS	Rwy Idg	5604
109.9	073°	TDZE	109
		Apt Elev	113

# ILS or LOC RWY 7

EXEC (ORL)

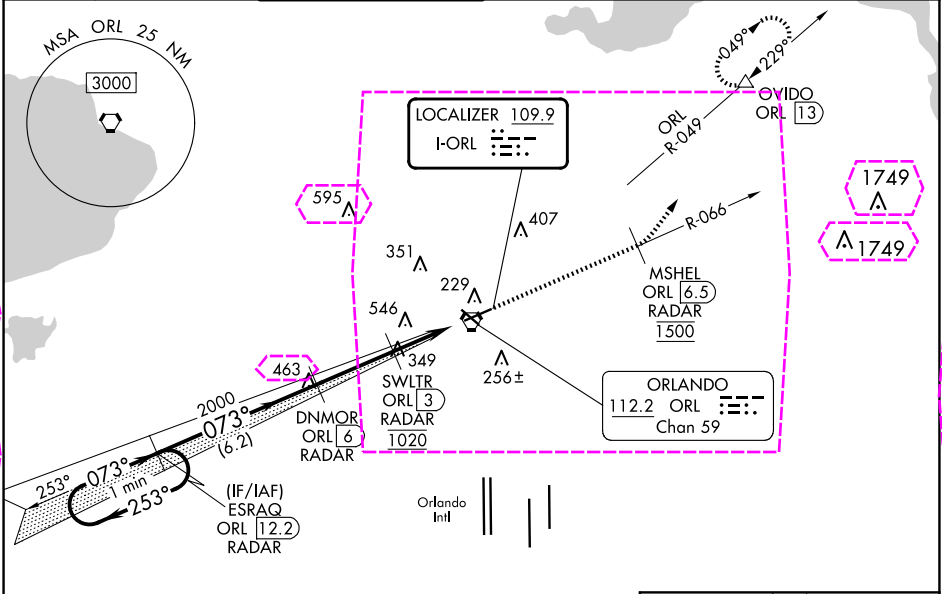
RADAR required for procedure entry. DME or RADAR required.

**⚠** Circling Rwy 31 NA at night. In minimum visibility conditions, bright lights on highway ½ mile south of airport may be mistaken for runway lights. For inop ALS, increase S-ILS 7 all Cats visibility to RVR 4500 and S-LOC 7 Cts A/B visibility to RVR 5500. Rwy 7 helicopter visibility reduction below ¾ SM NA. Autopilot coupled approach NA below 320.

**MALSR**

MISSED APPROACH: Climb on ORL VORTAC R-066 to cross MSHEL/ORL 6.5 DME/RADAR at 1500 then climbing left turn to 1600 on heading 020° and ORL VORTAC R-049 to OVIDO/ORL 13 DME and hold.

ATIS	ORLANDO APP CON	EXECUTIVE TOWER ★	GND CON	CLNC DEL	CLNC DEL	UNICOM
127.25	124.8 351.9	118.7 (CTAF) 239.0	121.4 239.0	128.45	125.225 (when twr closed)	122.95



**ELEV 113** **TDZE 109**

ORL R-066 **1500** MSHEL ORL 6.5 RADAR **1600** hdg 020° ORL R-049 OVIDO ORL 13

One Minute Holding Pattern

ESRAQ ORL 12.2 RADAR

DNMOR ORL 6 RADAR

SWLTR ORL 3 RADAR

ORL VORTAC

ORL 0.2

GS 3.00° TCH 52

2000 253° 073° 2000

6.2 NM 3 NM 2.8 NM

\*LOC only.

\*1020

178±

6025 X 100

6004 X 150

TWR 221

073°

CATEGORY	A	B	C	D
S-ILS 7	391/40 282 (300-¾)			
S-LOC 7	660/40 551 (600-¾) 660/60 551 (600-1¼)			
<b>CIRCLING</b>	660-1 547 (600-1)	680-1 567 (600-1)	860-2¼ 747 (800-2¼)	860-2½ 747 (800-2½)

REIL Rwys 13 and 31

HIRL Rwys 7-25 and 13-31

FAF to MAP 5.8 NM

Knots	60	90	120	150	180
Min:Sec	5:48	3:52	2:54	2:19	1:56

ORLANDO, FLORIDA  
Amdt 24C 07SEP23

28°33'N-81°20'W

# ILS or LOC RWY 7

EXEC (ORL)

SE-3, 10 JUL 2025 to 07 AUG 2025

SE-3, 10 JUL 2025 to 07 AUG 2025

ORLANDO, FLORIDA

AL-305 (FAA)

25219

LOC I-ORL	APP CRS	Rwy Ldg
109.9	073°	5604
		TDZE
		109
		Apt Elev
		113

ILS or LOC RWY 7  
ORLANDO EXEC (ORL)

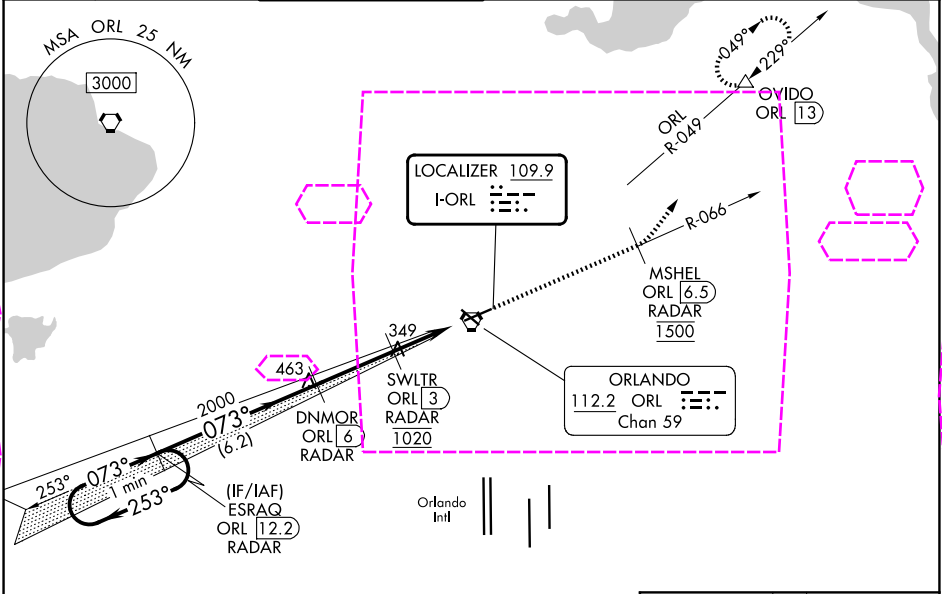
RADAR required for procedure entry. DME or RADAR required.

⚠ Circling Rwy 31 NA at night. In minimum visibility conditions, bright lights on highway ½ mile south of airport may be mistaken for runway lights. For inop ALS, increase S-ILS 7 all Cats visibility to RVR 4500 and S-LOC 7 Cts A/B visibility to RVR 5500. Rwy 7 helicopter visibility reduction below ¾ SM NA. Autopilot coupled approach NA below 320.

MALSR

MISSED APPROACH: Climb on ORL VORTAC R-066 to cross MSHEL/ORL 6.5 DME/RADAR at 1500 then climbing left turn to 1600 on heading 020° and ORL VORTAC R-049 to OVIDO/ORL 13 DME and hold.

ATIS	ORLANDO APP CON	EXECUTIVE TOWER *	GND CON	CLNC DEL	CLNC DEL	UNICOM
127.25	124.8 351.9	118.7 (CTAF) 239.0	121.4 239.0	128.45	125.225 (When twr closed)	122.95



ELEV 113 TDZE 109

ORL R-066 1500 MSHEL ORL 6.5 RADAR 1600 hdg 020° ORL R-049 OVIDO ORL 13

\*LOC only.

One Minute Holding Pattern

ESRAQ ORL 12.2 RADAR

DNMR ORL 6 RADAR

SWLTR ORL 3 RADAR

ORL VORTAC

ORL 0.2

GS 3.00° TCH 52

2000 253° 073° 2000

6.2 NM 3 NM 2.8 NM

CATEGORY A B C D

S-ILS 7 391/40 282 (300-¾)

S-LOC 7 660/40 551 (600-¾) 660/60 551 (600-1¼)

CIRCLING 660-1 547 (600-1) 680-1 567 (600-1) 860-2¼ 747 (800-2¼) 860-2½ 747 (800-2½)

REIL Rwy 13 and 31

HIRL Rwy 7-25 and 13-31

FAF to MAP 5.8 NM

Knots	60	90	120	150	180
Min:Sec	5:48	3:52	2:54	2:19	1:56

ORLANDO, FLORIDA  
Amdt 24C 07SEP23

28°33'N-81°20'W

ORLANDO EXEC (ORL)  
ILS or LOC RWY 7