

OGDEN, UTAH

AL-297 (FAA)

25163

VORTAC OGD 115.7 Chan 104	APP CRS 101°	Rwy Ldg TDZE Apt Elev 4473	N/A N/A 4473
---	------------------------	---	---

VOR-A

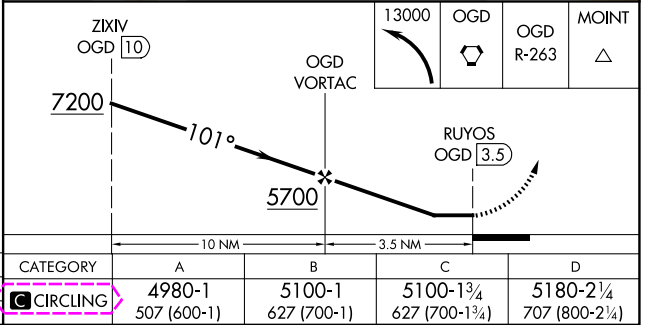
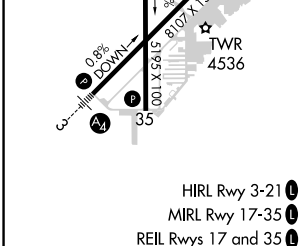
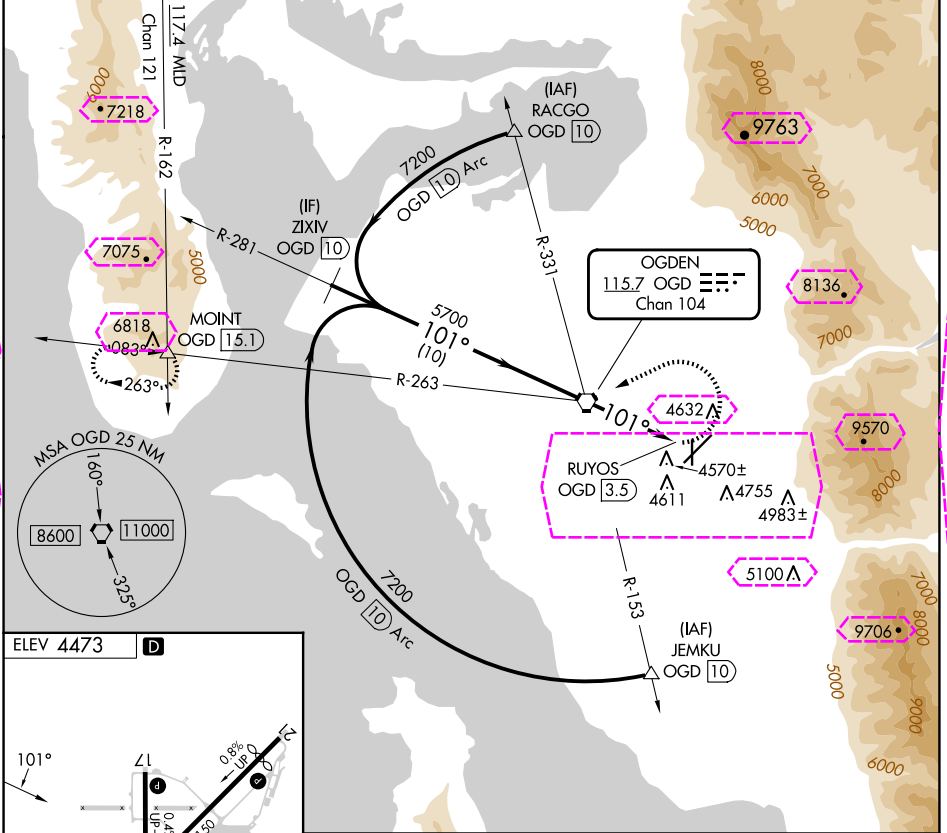
OGDEN-HINCKLEY (OGD)

DME or RADAR required.

V Circling NA for Cat C/D east of Rwy 21 and 35.

MISSED APPROACH: Climbing left turn to 13000 direct OGD VORTAC and on OGD VORTAC R-263 to MOINT/15.1 DME and hold, continue climb-in-hold.

ATIS 125.55	SALT LAKE CITY APP CON 121.1	OGDEN TOWER★ 118.7 (CTAF) 0 253.5	GND CON 121.7	UNICOM 122.95
-----------------------	--	---	-------------------------	-------------------------



FAF to MAP 3.5 NM					CATEGORY	A	B	C	D
Knots	60	90	120	150	180	4980-1	5100-1	5100-1¾	5180-2¼
Min:Sec	3:30	2:20	1:45	1:24	1:10	507 (600-1)	627 (700-1)	627 (700-1¾)	707 (800-2¼)

OGDEN, UTAH
Orig-A 12JUN25

41°12'N-112°01'W

OGDEN-HINCKLEY (OGD)
VOR-A

SW-4, 10 JUL 2025 to 07 AUG 2025

SW-4, 10 JUL 2025 to 07 AUG 2025

OGDEN, UTAH

VORTAC OGD 115.7 Chan 104	APP CRS 101°	Rwy Ldg N/A TDZE N/A Apt Elev 4473
---	------------------------	---

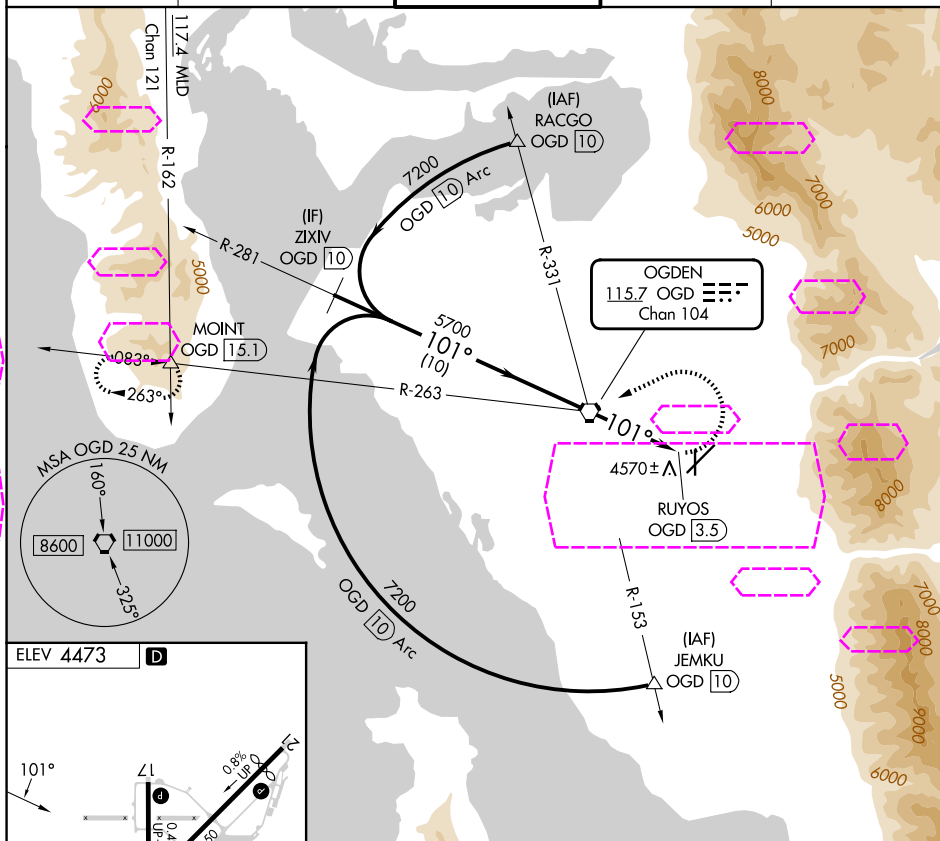
VOR-A
OGDEN-HINCKLEY (OGD)

DME or RADAR required.

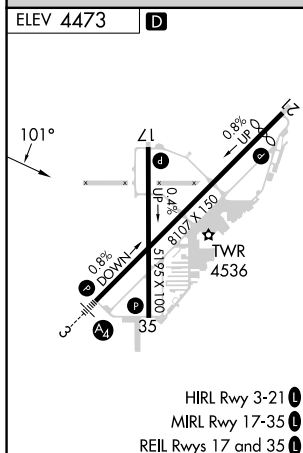
T Circling NA for Cat C/D east of Rwy 21 and 35.

MISSED APPROACH: Climbing left turn to 13000 direct OGD VORTAC and on OGD VORTAC R-263 to MOINT/15.1 DME and hold, continue climb-in-hold to 13000.

ATIS 125.55	SALT LAKE CITY APP CON 121.1	OGDEN TOWER* 118.7 (CTAF) 0 253.5	GND CON 121.7	UNICOM 122.95
-----------------------	--	---	-------------------------	-------------------------



SW-4, 07 AUG 2025 to 04 SEP 2025

HIRL Rwy 3-21 **L**

MIRL Rwy 17-35 L

REIL Rwy 17 and 35

FAF to MAP 3.5 NM						CATEGORY	A	B	C	D
Knots	60	90	120	150	180	CIRCLING	4980-1	5100-1	5100-1¾	5180-2¼
Min:Sec	3:30	2:20	1:45	1:24	1:10		507 (600-1)	627 (700-1)	627 (700-1¾)	707 (800-2¼)

OGDEN, UTAH

Orig-B 07AUG25

OGDEN-HINCKLEY (OGD)

VOR-A

41°12'N-112°01'W