

ILS or LOC RWY 3
OGDEN-HINCKLEY (OGD)

MISSED APPROACH: Climb to 5000 then climbing left turn to 9000 direct OGD VORTAC and on OGD VORTAC R-263 to MOINT/OGD 15.1 DME and hold, continue climb-in-hold to 9000

7075

5000

6818

1083

MOINT
OGD 15.1

263°

Procedure NA for arrival at RIDEN
on V257 northbound.

(IAF)
RIDEN
TCH 27

8000
116°
(11.5)

OGDEN
115.7 OGD
Chan 104

LOCALIZER 111.7
I-OGD
Chan 54

4632

4611

4755

4983±

WULFE
I-OGD 6
RADAR

8000
103.4°
(9.3)

214°

R-296

6596

(IF)
JOSIF
I-OGD 15.3
RADAR

MSA OGD 25 NM

160°

11000

8500

323°

IAF
WASATCH
116.8 TCH
Chan 115

8000
296°
(15.6)

8000

7000

8136

9570

5100

9706

ALTERNATE MISSED APCH FIX

124°

304°

MOINT
TCH 31.5

116.8 TCH
R-304
Chan 115

ELEV 4473

TDZE 4473

Procedure NA for arrival on TCH VORTAC
airway radials 249 CW 331.

ELEV 4473

D

TDZE 4473

HIRL Rwy 3-21
MIRL Rwy 17-35
REIL Rwys 17 and 35

FAF to MAP 4.6 NM					
Knots	60	90	120	150	180
Min:Sec	4:36	3:04	2:18	1:50	1:32

SW-4, 10 JUL 2025 to 07 AUG 2025

OGDEN, UTAH

AL-297 (FAA)

25219

LOC/DME I-OGD 111.7 Chan 54	APP CRS 034°	Rwy Ldg TDZE 4473 Apt Elev 4473
---	------------------------	---

ILS or LOC RWY 3

OGDEN-HINCKLEY (OGD)

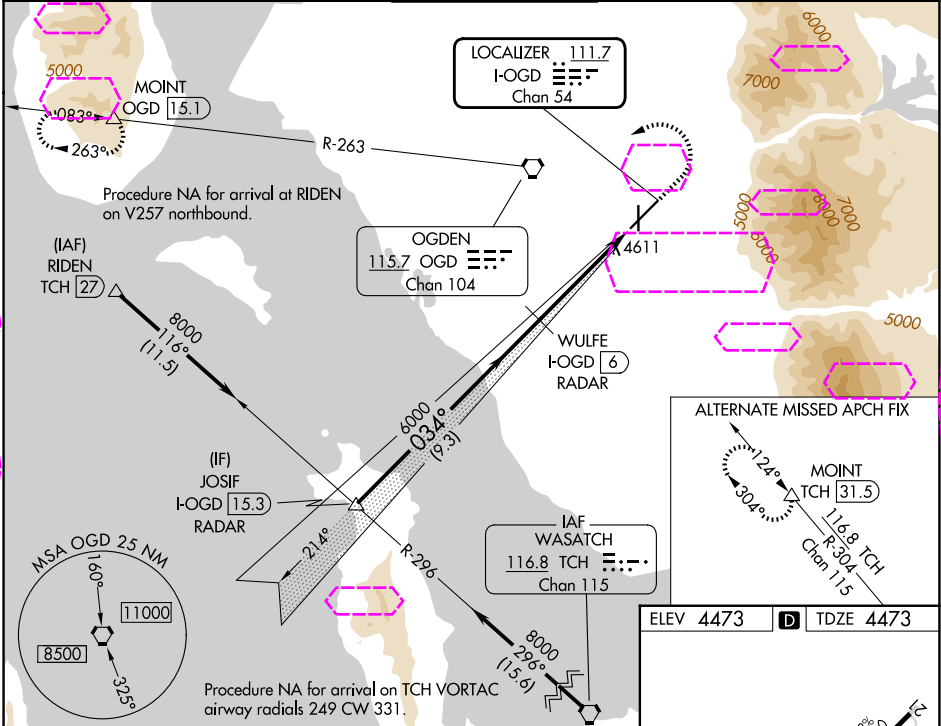
DME required. RADAR required for procedure entry.

▼ Rwy 3 helicopter visibility reduction below ¾ SM NA. For inop ALS, increase S-ILS 3 all Cats visibility to ¾ SM. For inop ALS, increase S-LOC 3 Cat C/D visibility to 1 ½ SM. Circling NA for Cats C and D east of Rwy 21 and 35.

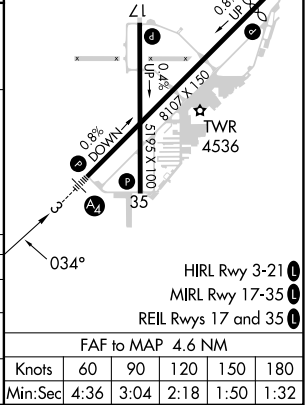
MALS
A4

MISSED APPROACH: Climb to 5000 then climbing left turn to 9000 direct OGD VORTAC and on OGD VORTAC R-263 to MOINT/OGD 15.1 DME and hold, continue climb-in-hold to 9000.

ATIS 125.55	SALT LAKE CITY APP CON 121.1	OGDEN TOWER* 118.7 (CTAF) 0 253.5	GND CON 121.7	UNICOM 122.95
-----------------------	--	---	-------------------------	-------------------------



VGSI and ILS glidepath not coincident (VGSI Angle 3.00/TCH 56).				
JOSIF I-OGD RADAR	WULFE I-OGD RADAR	OGD R-263	MOINT	
8000	6000	9000	5000	
GS 3.00° TCH 49	034°	034°	034°	
9.3 NM	3.5 NM	1.1 NM		
CATEGORY	A	B	C	D
S-ILS 3	4740-¾ 267 (300-¾)			
S-LOC 3	4880-¾	407 (500-¾)	4880-1	407 (500-1)
CIRCLING	4980-1 507 (600-1)	5100-1 627 (700-1)	5100-1¾ 627 (700-1¾)	5180-2¼ 707 (800-2¼)



OGDEN, UTAH

Amdt 5A 21MAY20

41°12'N-112°01'W

OGDEN-HINCKLEY (OGD)

ILS or LOC RWY 3

SW-4, 07 AUG 2025 to 04 SEP 2025

SW-4, 07 AUG 2025 to 04 SEP 2025