

(ENO.PROUD2) 24025

AL-289 (FAA)

LAGUARDIA (LGA)

PROUD TWO ARRIVAL (RNAV) Transition Routes

NEW YORK, NEW YORK

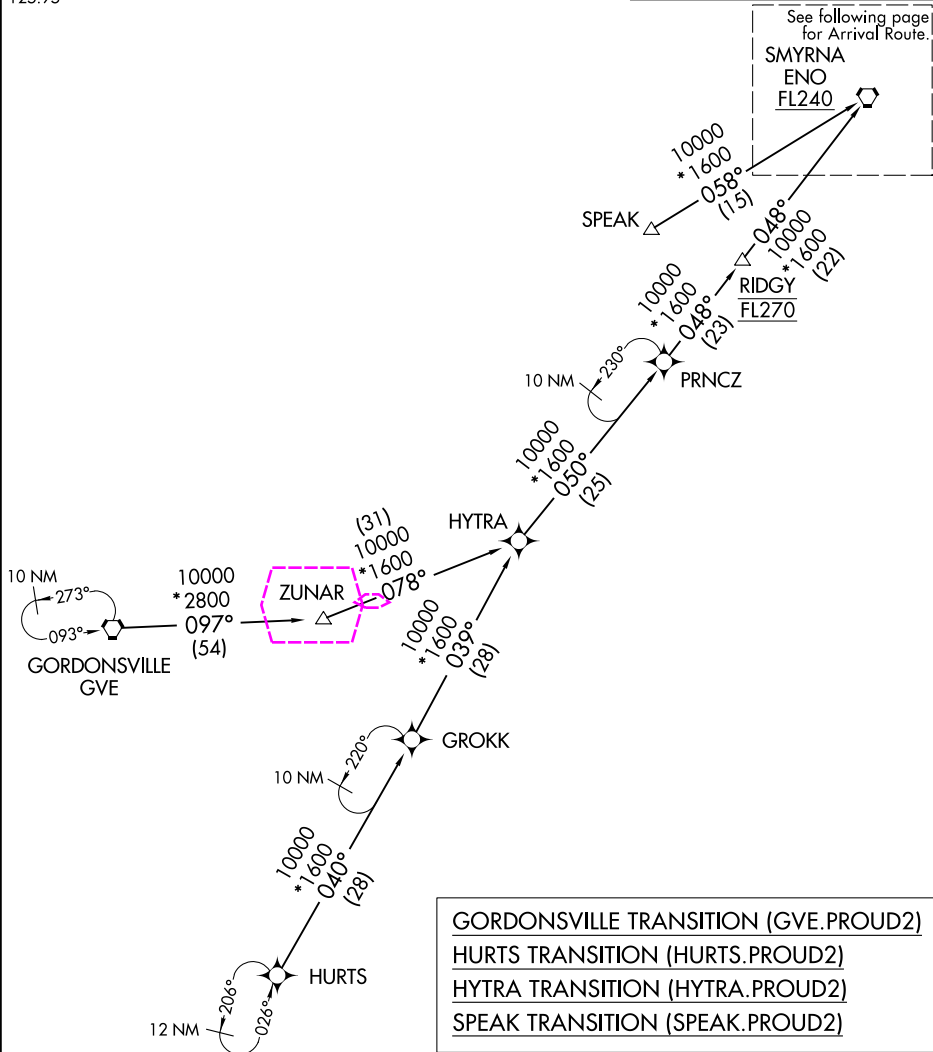
NEW YORK APP CON
127.3 263.0
D-ATIS ARR
125.95

RNAV 1 - DME/DME/IRU or GPS.

RADAR required.

See following page
for Arrival Route.

SMYRNA
ENO
FL240



NOTE: Jet aircraft only.

NOTE: SPEAK transition for Washington Metropolitan departures only.

(CONTINUED ON FOLLOWING PAGE)

NOTE: Chart not to scale.

PROUD TWO ARRIVAL (RNAV) Transition Routes

(ENO.PROUD2) 25JAN24

NEW YORK, NEW YORK

LAGUARDIA (LGA)

NE-2, 10 JUL 2025 to 07 AUG 2025

NE-2, 10 JUL 2025 to 07 AUG 2025

(ENO.PROUD2) 25219

AL-289 (FAA)

LAGUARDIA (LGA)

PROUD TWO ARRIVAL (RNAV) Transition Routes

NEW YORK, NEW YORK

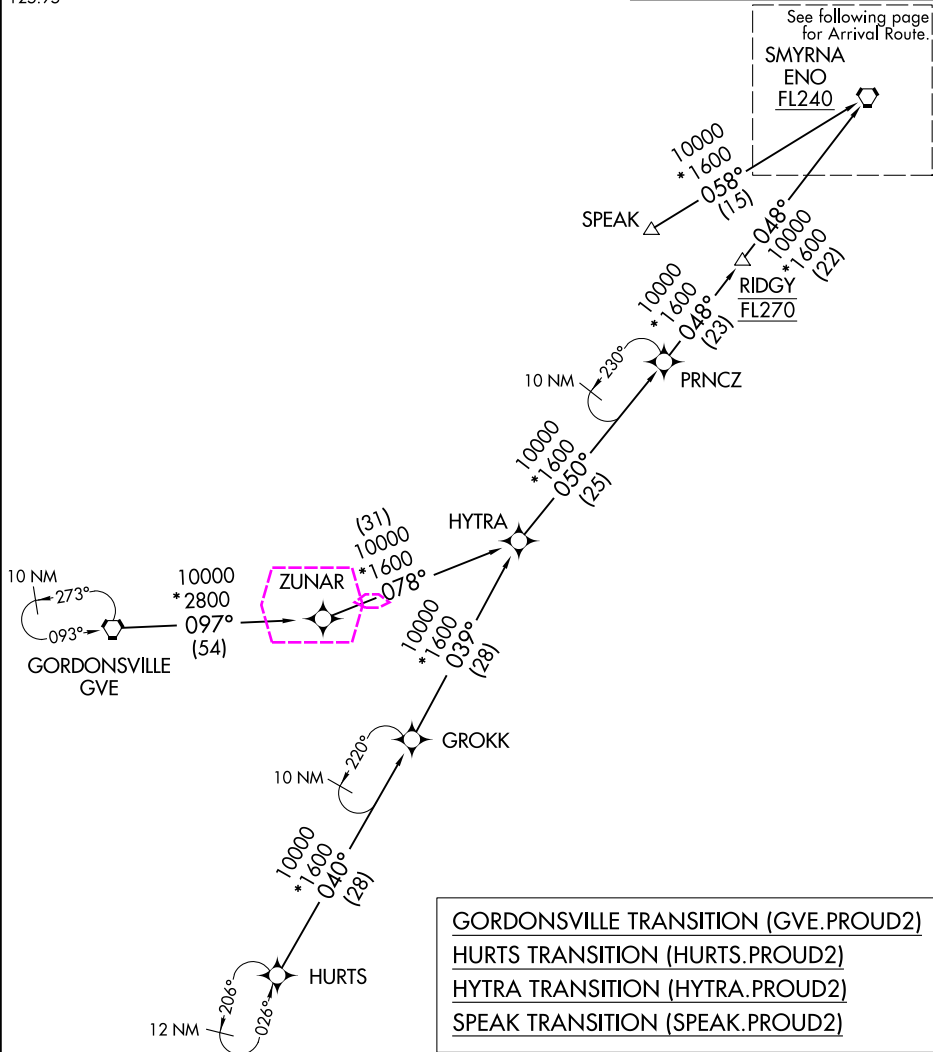
NEW YORK APP CON
127.3 263.0
D-ATIS ARR
125.95

RNAV 1 - DME/DME/IRU or GPS.

RADAR required.

See following page
for Arrival Route.

SMYRNA
ENO
FL240



NOTE: Jet aircraft only.

NOTE: SPEAK transition for Washington Metropolitan departures only.

(CONTINUED ON FOLLOWING PAGE)

NOTE: Chart not to scale.

PROUD TWO ARRIVAL (RNAV) Transition Routes

(ENO.PROUD2) 25JAN24

NEW YORK, NEW YORK

LAGUARDIA (LGA)

NE-2, 07 AUG 2025 to 04 SEP 2025

NE-2, 07 AUG 2025 to 04 SEP 2025