

NEWARK, NEW JERSEY

AL-285 (FAA)

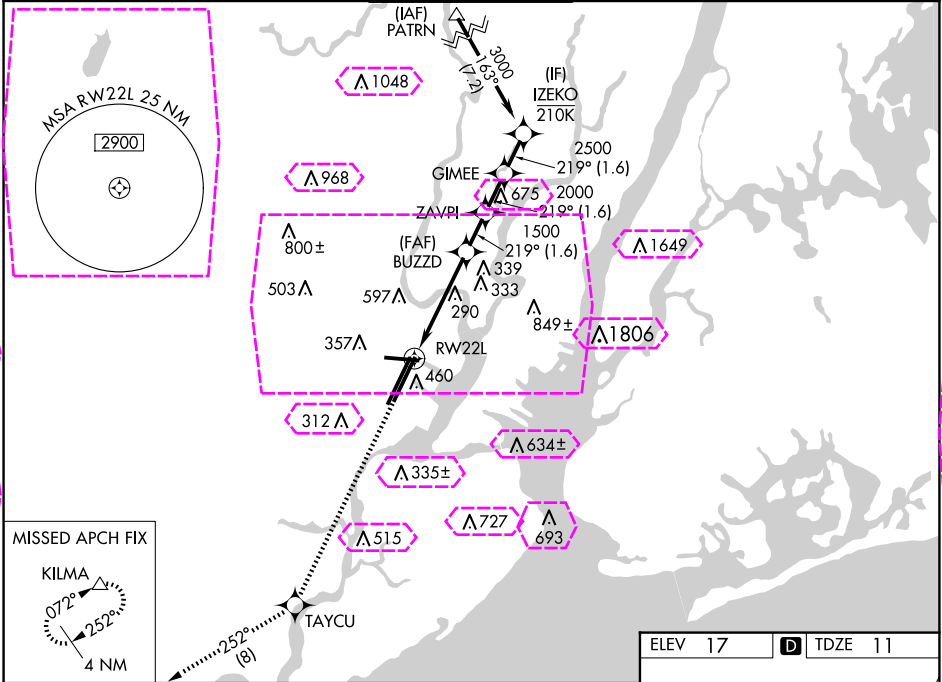
25107

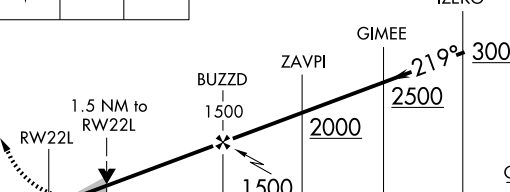
WAAS CH 70324 W22A	APP CRS 219°	Rwy Idg 8205 TDZE 11 Apt Elev 17
--	------------------------	---

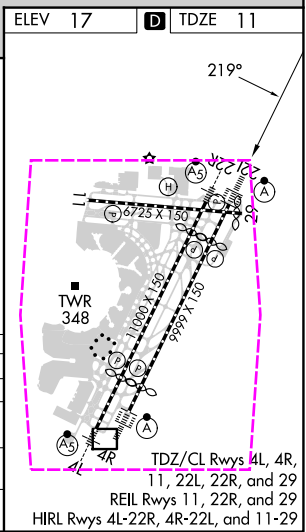
RNAV (GPS) Z RWY 22L

NEWARK LIBERTY INTL (EWR)

RNP APCH - GPS.		ALSIF-2	MISSED APPROACH: Climb to 3000 direct TAYCU and on track 252° to KILMA and hold.		
D-ATIS 115.7 134.825		NEWARK APP CON 128.55 379.9	NEWARK TOWER 118.3 257.6	GND CON 121.8	CLNC DEL 118.85
				CPDLC	



3000	TAYCU	tr 252°	KILMA	VGSi and RNAV glidepath not coincident (VGSi Angle 3.00/TCH 60).	
↑	✱		△		
					
CATEGORY	A	B	C	D	
LPV DA	211/18 200 (200-½)				
LNAV/VNAV DA	462/45 451 (500-¾)				
LNAV MDA	560/24	549 (600-½)	560/60	549 (600-1¼)	
CIRCLING	660-1	643 (700-1)	900-2¾ 883 (900-2¾)	900-3 883 (900-3)	



NEWARK, NEW JERSEY
Amdt 3 23FEB23

40°42'N-74°10'W

NEWARK LIBERTY INTL (EWR)

RNAV (GPS) Z RWY 22L

WAAS CH 70324 W22A	APP CRS 219°	Rwy Ldg 8205 TDZE 11 Apt Elev 17
--	------------------------	---

RNAV (GPS) Z RWY 22L

NEWARK LIBERTY INTL (EWR)

RNP APCH - GPS.

T Circling NA south of Rwy 11-29. For uncompensated Baro-VNAV systems, LNAV/VNAV NA below -12°C or above 54°C. When Circling to Rwy 29 **A** at night, operational VGSI required, remain on or above VGSI glidepath until threshold

ALSF-2



MISSED APPROACH: Climb to 3000 direct TAYCU and on track 252° to KILMA and hold.

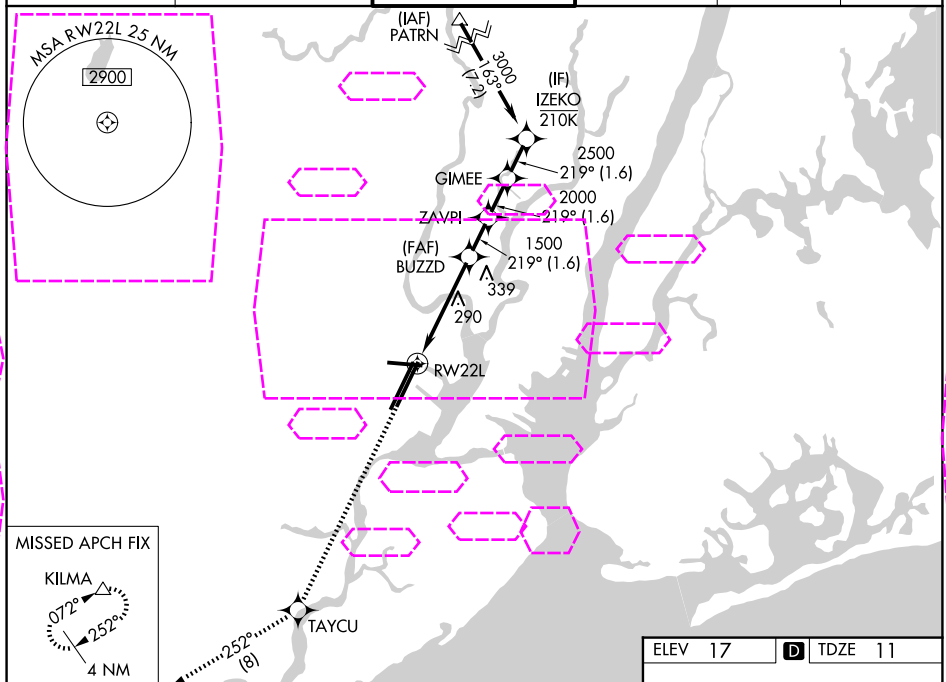
D-ATIS
115.7 134.825

NEWARK APP CON
128.55 379.9NEWARK TOWER
118.3 257.6

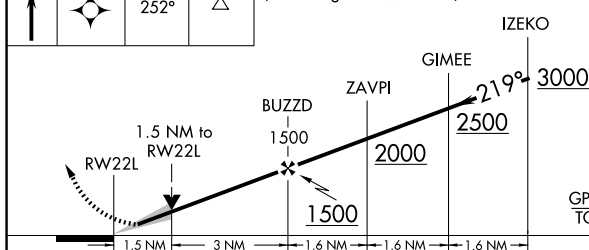
GND CO
121.8

CLNC DEL
118.85

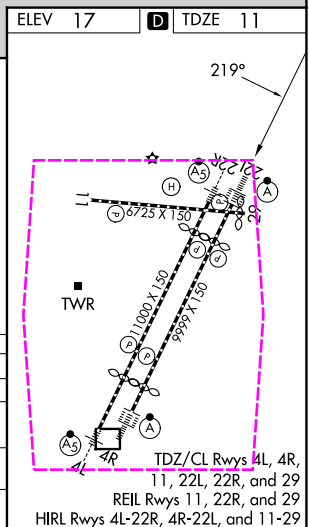
CPDLC



3000	TAYCU	tr	KILMA	VGSI and RNAV glidepath not coincident (VGSI Angle 3.00/TCH 60).
------	-------	----	-------	--



CATEGORY	A	B	C	D
LPV DA	211/18 200 (200-½)			
LNAV/VNAV DA	462/45 451 (500-¾)			
LNAV MDA	560/24	549 (600-½)	560/60	549 (600-1¼)
CIRCLING	660-1	643 (700-1)	900-2¾ 883 (900-2¾)	900-3 883 (900-3)

NEWARK, NEW JERSEY
Amdt 3 23FEB23

40°42'N-74°10'W

NEWARK LIBERTY INTL (EWR)

RNAV (GPS) Z RWY 22L

NE-2, 07 AUG 2025 to 04 SEP 2025