

NEWARK, NEW JERSEY

AL-285 (FAA)

25107

WAAS CH <b>60924</b> <b>W04B</b>	APP CRS <b>039°</b>	Rwy Idg <b>8809</b> TDZE <b>11</b> Apt Elev <b>17</b>
--	------------------------	---

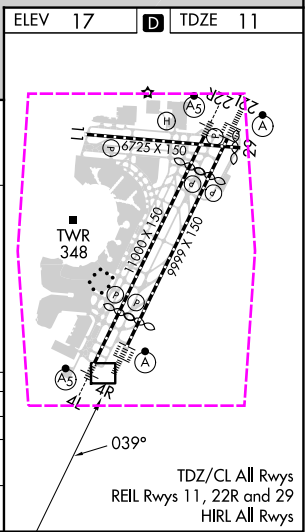
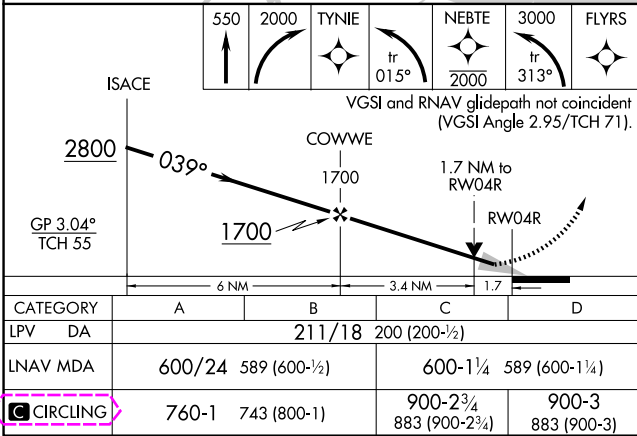
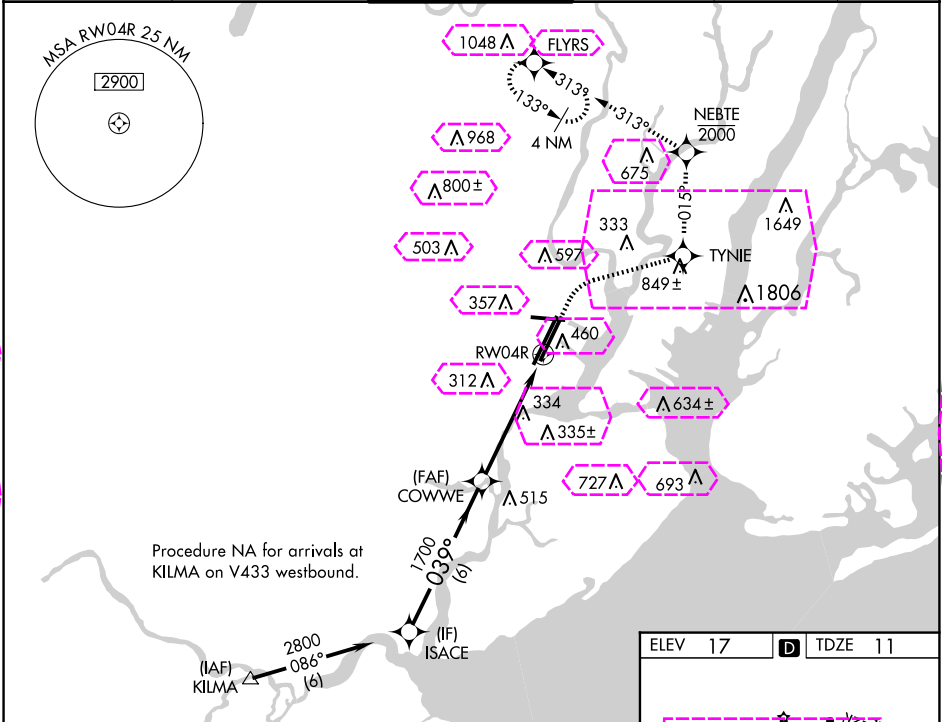
# RNAV (GPS) Y RWY 4R

NEWARK LIBERTY INTL (EWR)

RNP APCH - GPS.  
RADAR required.  
When Circling to Rwy 29 at night, operational VGSI required, remain on or above VGSI glidepath until threshold.

ALSF-2  
MISSED APPROACH: (Do not exceed 210K until NEBTE) Climb to 550 then climbing right turn to 2000 direct TYNIE and left turn on track 015° to NEBTE, cross NEBTE at or below 2000 then climbing left turn to 3000 on track 313° to FLYRS and hold, continue climb-in-hold to 3000.

D-ATIS <b>115.7 134.825</b>	NEWARK APP CON <b>128.55 379.9</b>	NEWARK TOWER <b>118.3 257.6</b>	GND CON <b>121.8</b>	CLNC DEL <b>118.85</b>	CPDLC
--------------------------------	---------------------------------------	------------------------------------	-------------------------	---------------------------	-------



NEWARK, NEW JERSEY

AL-285 (FAA)

25219

WAAS CH <b>60924</b> <b>W04B</b>	APP CRS <b>039°</b>	Rwy Ldg <b>8809</b> TDZE <b>11</b> Apt Elev <b>17</b>
--	------------------------	---

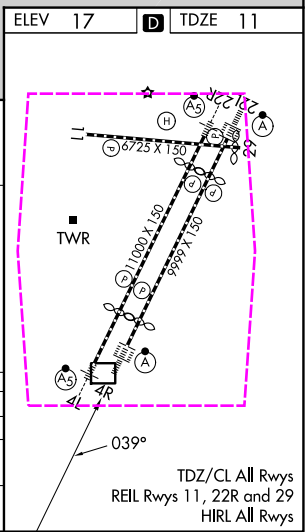
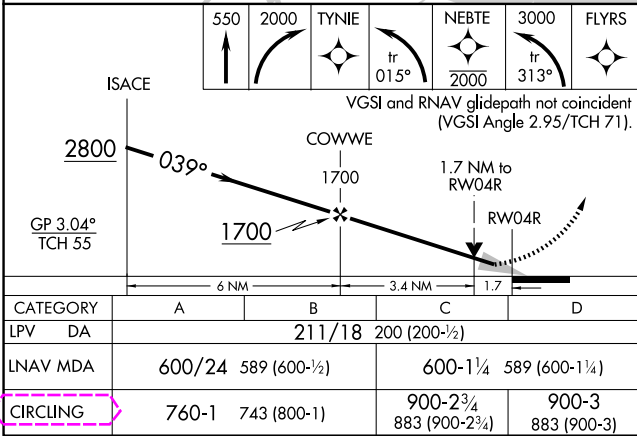
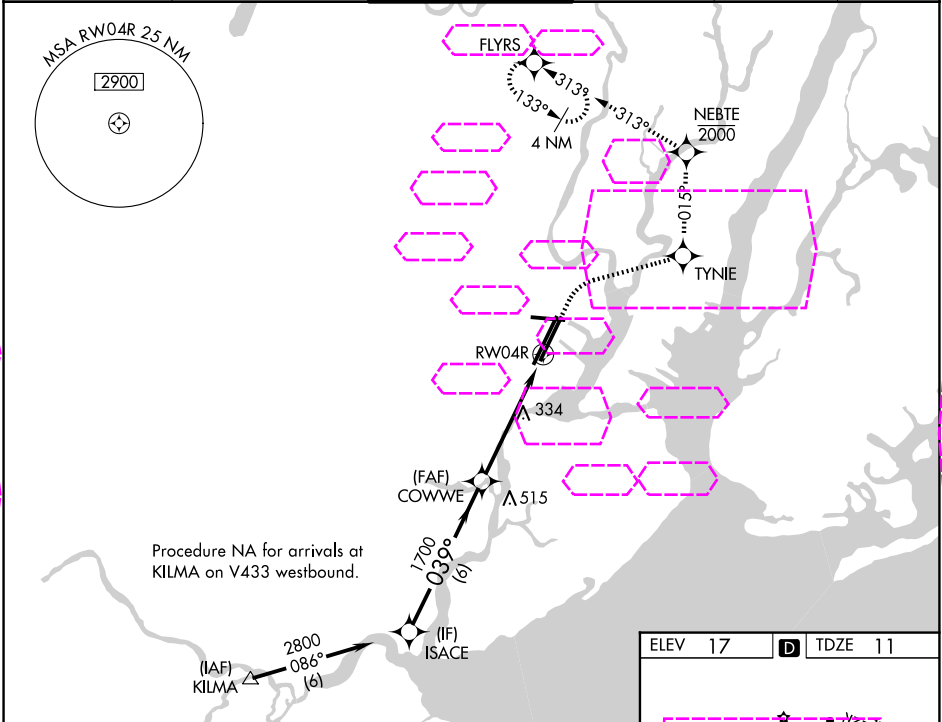
# RNAV (GPS) Y RWY 4R

NEWARK LIBERTY INTL (EWR)

RNP APCH - GPS.  
RADAR required.  
⚠ When Circling to Rwy 29 at night, operational VGSI required, remain on or above VGSI glidepath until threshold.

ALSF-2  
ⓘ  
MISSED APPROACH: (Do not exceed 210K until NEBTE) Climb to 550 then climbing right turn to 2000 direct TYNIE and left turn on track 015° to NEBTE, cross NEBTE at or below 2000 then climbing left turn to 3000 on track 313° to FLYRS and hold, continue climb-in-hold to 3000.

D-ATIS <b>115.7 134.825</b>	NEWARK APP CON <b>128.55 379.9</b>	NEWARK TOWER <b>118.3 257.6</b>	GND CON <b>121.8</b>	CLNC DEL <b>118.85</b>	CPDLC
--------------------------------	---------------------------------------	------------------------------------	-------------------------	---------------------------	-------



NEWARK, NEW JERSEY  
Amdt 2 15JUN23

40°42'N-74°10'W

NEWARK LIBERTY INTL (EWR)

# RNAV (GPS) Y RWY 4R

NE-2, 07 AUG 2025 to 04 SEP 2025

NE-2, 07 AUG 2025 to 04 SEP 2025