

NEWARK, NEW JERSEY

AL-285 (FAA)

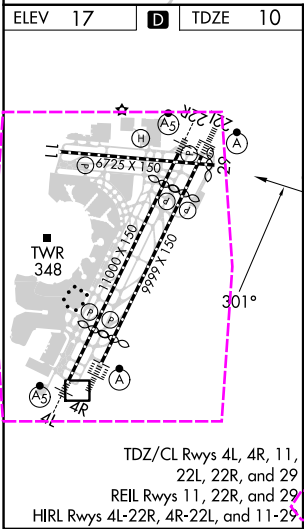
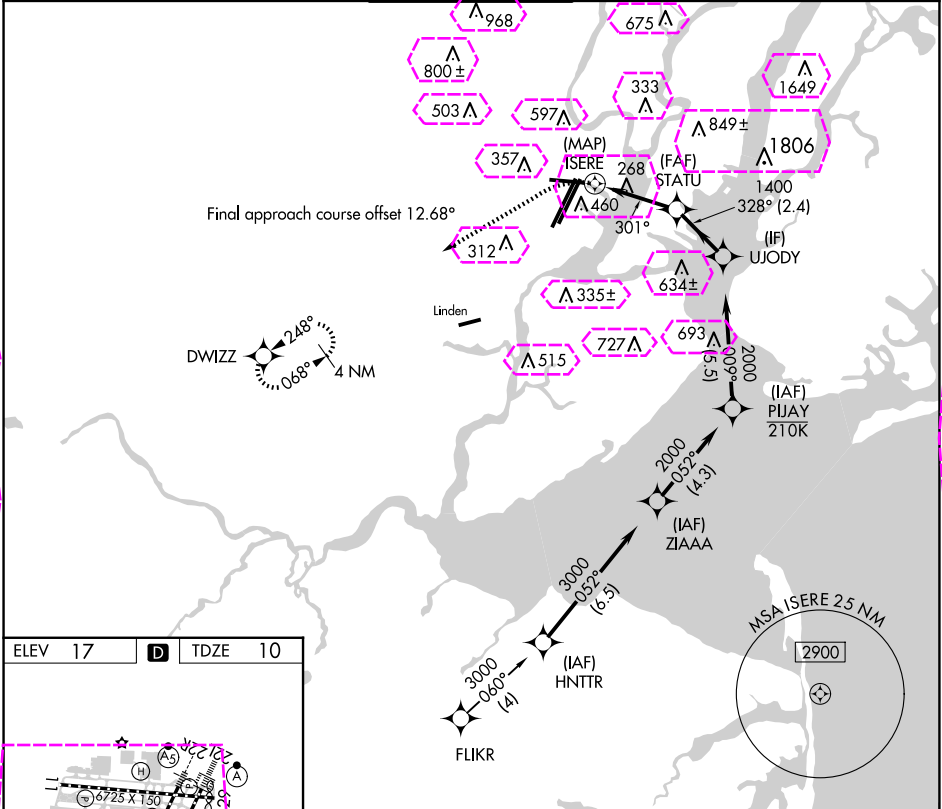
25107

APP CRS	Rwy Idg	6501
301°	TDZE	10
	Apt Elev	17

RNAV (GPS) X RWY 29

NEWARK LIBERTY INTL (EWR)

RNP APCH - GPS.			MISSED APPROACH: Climbing left turn to 2000 direct DWIZZ and hold.			
▼ Rwy 29 helicopter visibility reduction below 1 SM NA. Straight-in Rwy 29 at night, and when Circling to Rwy 29 at night, operational VGSI required, remain on or above VGSI glidepath until threshold.						
D-ATIS		NEWARK APP CON	NEWARK TOWER	GND CON	CLNC DEL	CPDLC
115.7 134.825		128.55 379.9	118.3 257.6	121.8	118.85	



2000	DWIZZ	VGSI and descent angles not coincident (VGSI Angle 3.00/TCH 60).			
		ISERE	STATU	UJODY	2000
		301°	328°		
		1400			
		≤ 3.50°			
		TCH 60			
		0.5	3.1 NM	2.4 NM	
CATEGORY	A	B	C	D	
LNAV MDA	520-1	510 (600-1)	520-1 ³ / ₈	510 (600-1 ³ / ₈)	
CIRCLING	760-1	820-1	900-2 ³ / ₄	900-3	
	743 (800-1)	803 (900-1)	883 (900-2 ³ / ₄)	883 (900-3)	

NEWARK, NEW JERSEY
Orig-C 05SEP24

40°42'N-74°10'W

NEWARK LIBERTY INTL (EWR)

RNAV (GPS) X RWY 29

NE-2, 10 JUL 2025 to 07 AUG 2025

NE-2, 10 JUL 2025 to 07 AUG 2025

NEWARK, NEW JERSEY

AL-285 (FAA)

25219

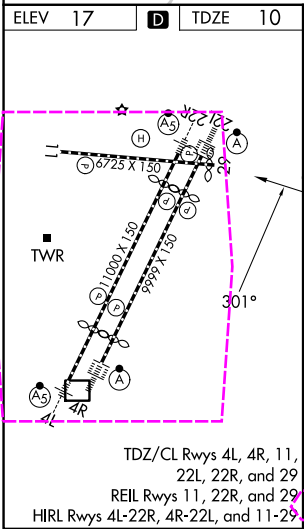
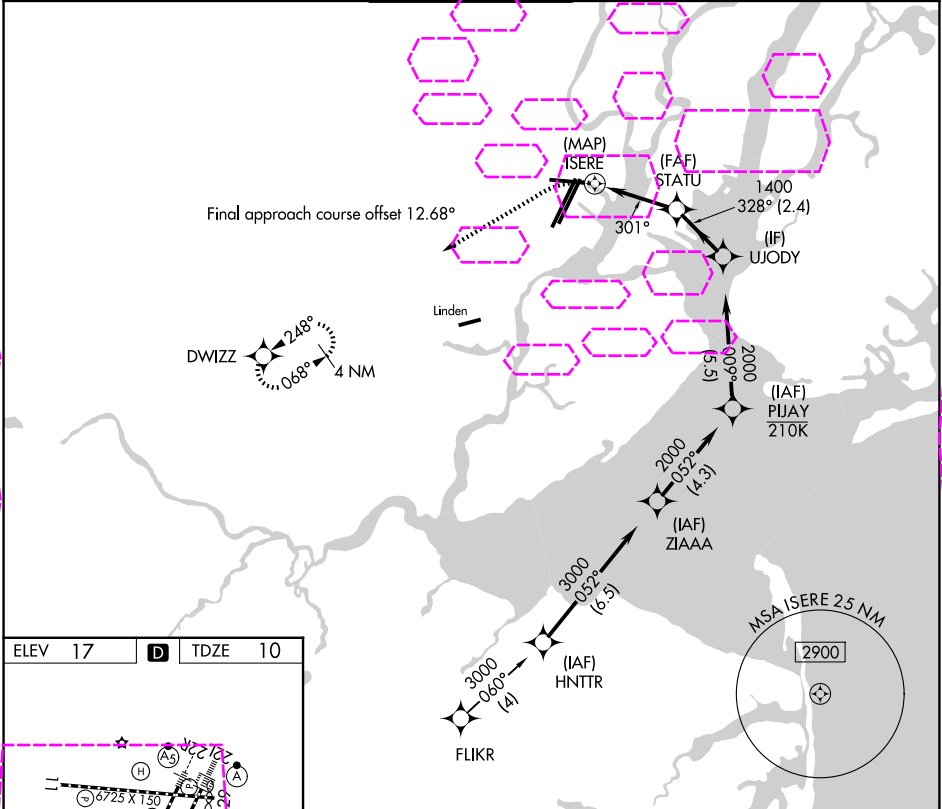
APP CRS	Rwy Ldg	6501
301°	TDZE	10
	Apt Elev	17

RNAV (GPS) X RWY 29

NEWARK LIBERTY INTL (EWR)

RNP APCH - GPS.			MISSED APPROACH: Climbing left turn to 2000 direct DWIZZ and hold.		
▼ Rwy 29 helicopter visibility reduction below 1 SM NA. Straight-in Rwy 29 at night, and when Circling to Rwy 29 at night, operational VGSI required, remain on or above VGSI glidepath until threshold.					

D-ATIS	NEWARK APP CON	NEWARK TOWER	GND CON	CLNC DEL	CPDLC
115.7 134.825	128.55 379.9	118.3 257.6	121.8	118.85	



2000	DWIZZ	VGSI and descent angles not coincident (VGSI Angle 3.00/TCH 60).			
		ISERE			
		STATU			
		UJODY			
		2000			
		1400			
		301°			
		328°			
		0.5			
		3.1 NM			
		2.4 NM			
CATEGORY	A	B	C	D	
LNAV MDA	520-1	510 (600-1)	520-1 $\frac{3}{8}$	510 (600-1 $\frac{3}{8}$)	
CIRCLING	760-1	820-1	900-2 $\frac{3}{4}$	900-3	
	743 (800-1)	803 (900-1)	883 (900-2 $\frac{3}{4}$)	883 (900-3)	

NEWARK, NEW JERSEY
Orig-C 05SEP24

40°42'N-74°10'W

NEWARK LIBERTY INTL (EWR)

RNAV (GPS) X RWY 29