

NEWARK, NEW JERSEY

AL-285 (FAA)

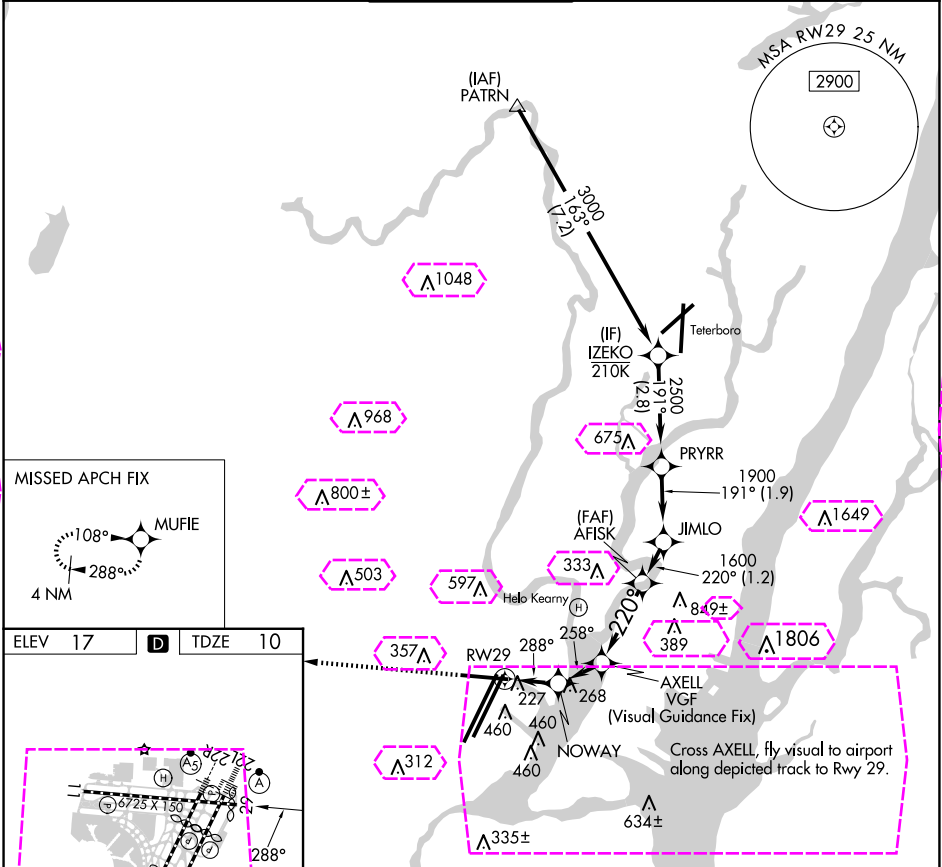
25107

APP CRS	Rwy Idg	6501
288°	TDZE	10
	Apt Elev	17

RNAV (GPS) W RWY 29

NEWARK LIBERTY INTL (EWR)

RNP APCH - GPS.			MISSED APPROACH: (Do not exceed 165K until Rwy 29) Climb to 2000 on the extended visual approach track to Rwy 29, then climb to 3000 direct MUFIE and hold.		
RADAR required.					
▼ Rwy 29 helicopter visibility reduction below 1 SM NA. Straight-in Rwy 29 at night, ▲ operational VGSI required, remain at or above VGSI glidepath until threshold.					
D-ATIS	NEWARK APP CON	NEWARK TOWER	GND CON	CLNC DEL	CPDLC
115.7 134.825	128.55 379.9	118.3 257.6	121.8	118.85	



ELEV 17	D	TDZE 10	Turns required in the visual segment. * Recommended ALT.			
2000 to RWY29			MUFIE			
3000			IZKO			
288°			PRYRR			
258°			JIMLO			
1600			AXELL			
220°			NOWAY			
288°			RWY29			
1.4 NM			1.2 NM			
2.3 NM			1.2 NM			
1.9 NM			2.8 NM			
CATEGORY			A			
LNAV MDA			920-3 910 (1000-3)			

NEWARK, NEW JERSEY
Orig-A 20FEB25

40°42'N-74°10'W

NEWARK LIBERTY INTL (EWR)

RNAV (GPS) W RWY 29

NE-2, 10 JUL 2025 to 07 AUG 2025

NE-2, 10 JUL 2025 to 07 AUG 2025

NEWARK, NEW JERSEY

AL-285 (FAA)

25219

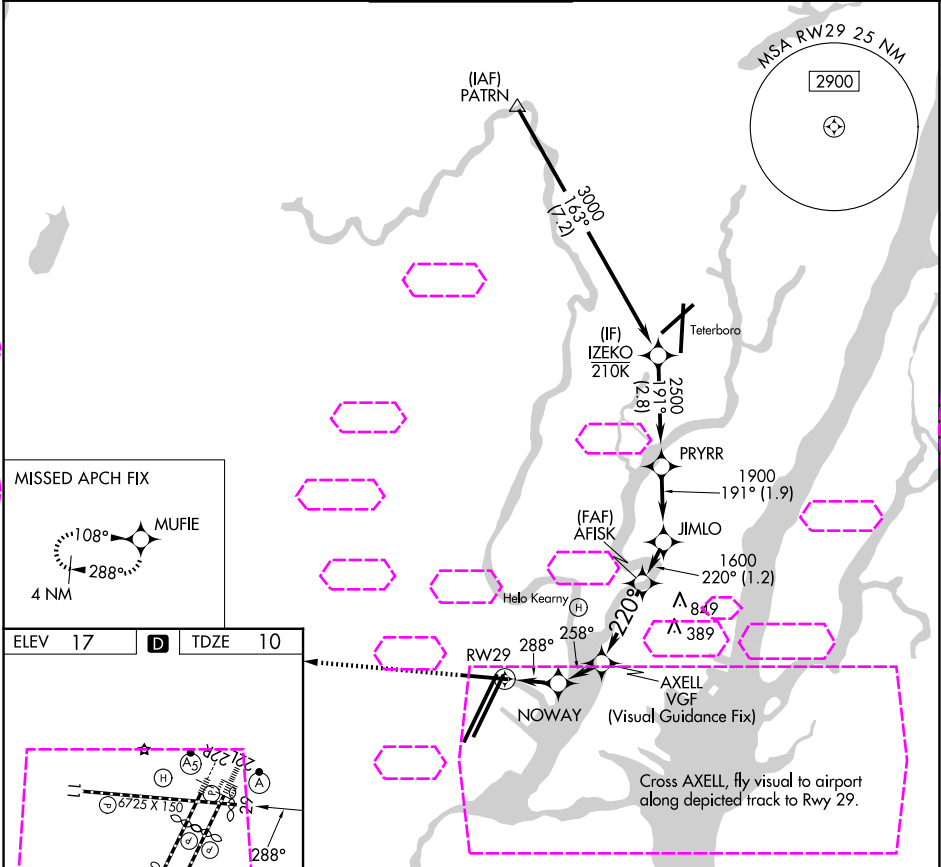
RNAV (GPS) W RWY 29

NEWARK LIBERTY INTL (EWR)

APP CRS	Rwy Ldg	6501
288°	TDZE	10
	Apt Elev	17

RNP APCH - GPS.	MISSED APPROACH: (Do not exceed 165K until Rwy 29) Climb to 2000 on the extended visual approach track to Rwy 29, then climb to 3000 direct MUFIE and hold.
RADAR required.	
▼ Rwy 29 helicopter visibility reduction below 1 SM NA. Straight-in Rwy 29 at night, operational VGSI required, remain at or above VGSI glidepath until threshold.	

D-ATIS	NEWARK APP CON	NEWARK TOWER	GND CON	CLNC DEL	CPDLC
115.7 134.825	128.55 379.9	118.3 257.6	121.8	118.85	



ELEV 17	D	TDZE 10	Turns required in the visual segment. * Recommended ALT.			
2000 to RWY 29			IZEKO			
3000 MUFIE			PRYRR			
2500			JIMLO			
1900			AXELL			
1600			RWY 29			
288°			258°			
1.4 NM			1.2 NM			
2.3 NM			1.2 NM			
1.9 NM			2.8 NM			
CATEGORY			A			
LNAY MDA			920-3			

NEWARK, NEW JERSEY
Orig-A 20FEB25

40°42'N-74°10'W

NEWARK LIBERTY INTL (EWR)

RNAV (GPS) W RWY 29

NE-2, 07 AUG 2025 to 04 SEP 2025

NE-2, 07 AUG 2025 to 04 SEP 2025