

NEWARK, NEW JERSEY

AL-285 (FAA)

25219

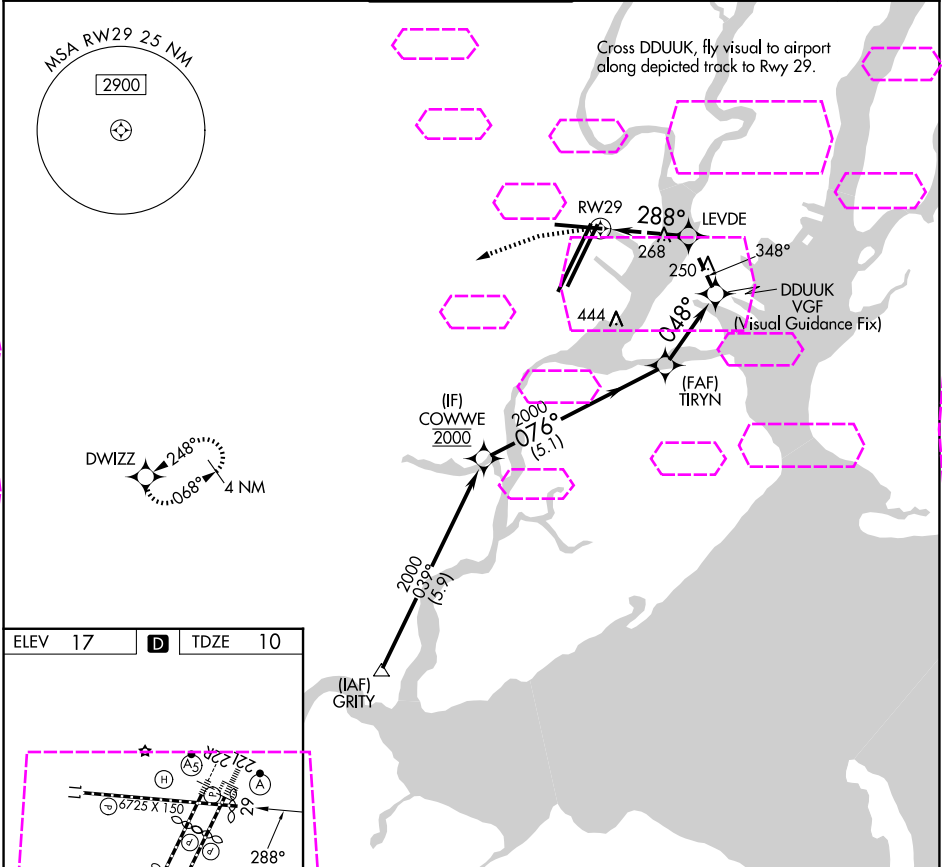
APP CRS	Rwy Ldg	6501
288°	TDZE	10
	Apt Elev	17

RNAV (GPS) T RWY 29

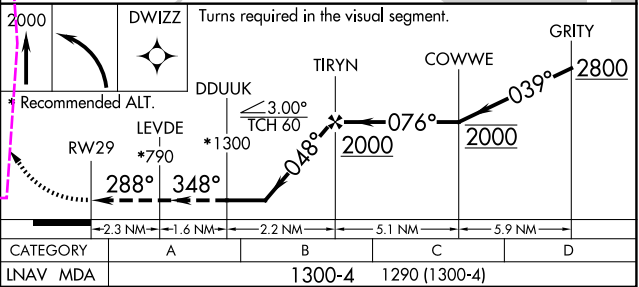
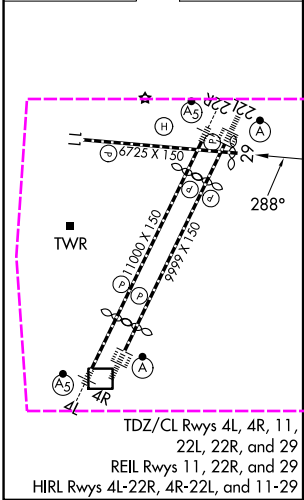
NEWARK LIBERTY INTL (EWR)

RNP APCH - GPS.	MISSED APPROACH: (Do not exceed 165K until Rwy 29) Climb to 2000 on the extended visual approach track to Rwy 29, then left turn direct DWIZZ and hold.
RADAR required.	
▼ Rwy 29 helicopter visibility reduction below 1 SM NA. Straight-in Rwy 29 at night, operational VGSI required, remain at or above VGSI glidepath until threshold.	

D-ATIS	NEWARK APP CON	NEWARK TOWER	GND CON	CLNC DEL	CPDLC
115.7 134.825	128.55 379.9	118.3 257.6	121.8	118.85	



ELEV 17	D	TDZE 10
---------	---	---------



NE-2, 07 AUG 2025 to 04 SEP 2025

NE-2, 07 AUG 2025 to 04 SEP 2025

NEWARK, NEW JERSEY
Orig 20MAR25

40°42'N-74°10'W

RNAV (GPS) T RWY 29