

NEWARK, NEW JERSEY

AL-285 (FAA)

25107

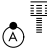
APP CRS	Rwy Idg	8809
039°	TDZE	11
	Apt Elev	17

# RNAV (RNP) Z RWY 4R

NEWARK LIBERTY INTL (EWR)

RNP AR APCH.  
RADAR required.

ALSF-2

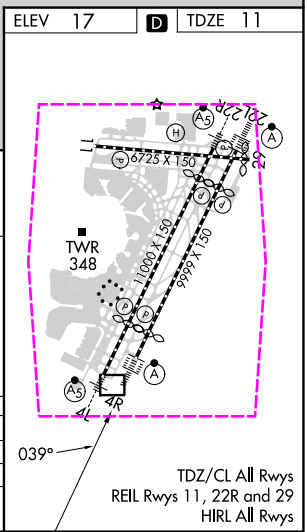
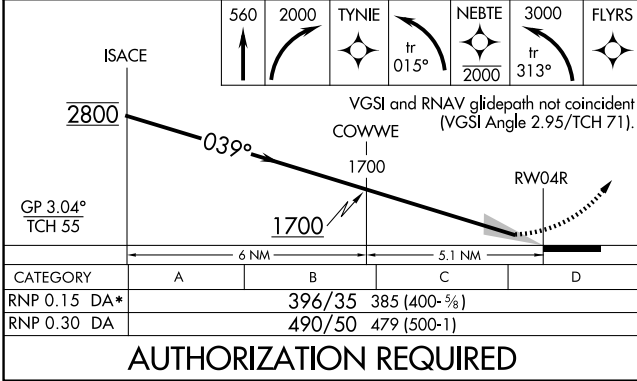
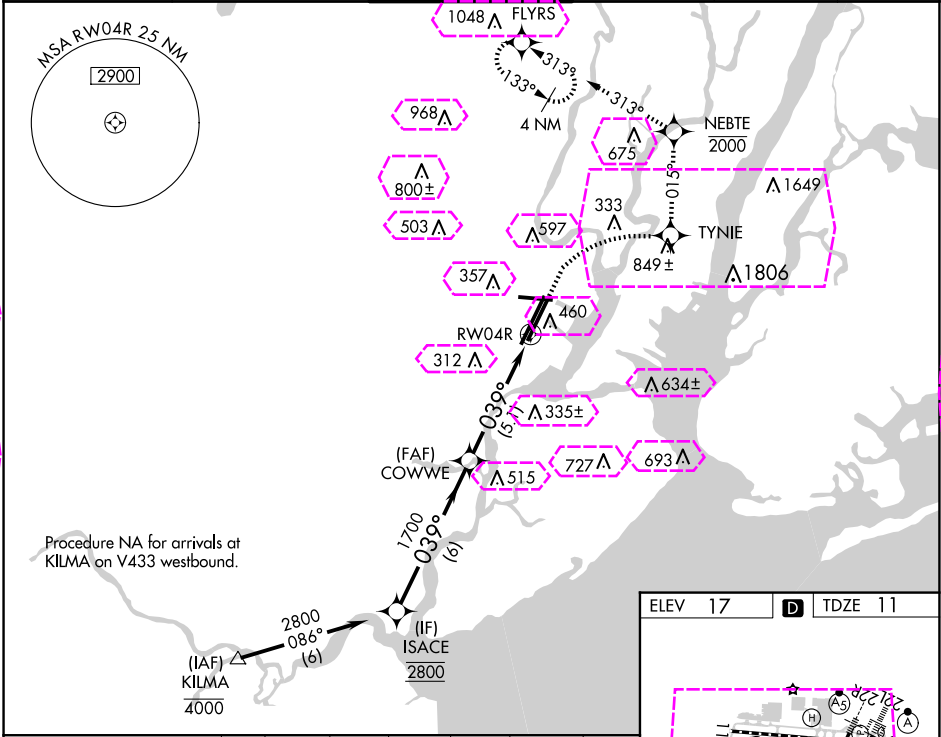


MISSED APPROACH: (Do not exceed 210K until NEBTE) Climb to 560 then climbing right turn to 2000 direct TYNIE and left turn on track 015° to NEBTE, cross NEBTE at or below 2000 then dimbing left turn to 3000 on track 313° to FLYRS and hold, continue climb-in-hold to 3000.

\* Missed approach requires minimum climb of 351 feet per NM to 660.

For uncompensated Baro-VNAV systems, procedure NA below -12°C or above 54°C. For inop ALS, increase RNP 0.30 all Cats visibility to 1 1/2 SM.

D-ATIS	NEWARK APP CON	NEWARK TOWER	GND CON	CLNC DEL	CPDLC
115.7 134.825	128.55 379.9	118.3 257.6	121.8	118.85	



NEWARK, NEW JERSEY  
Amdt 1 15JUN23

40°42'N-74°10'W

NEWARK LIBERTY INTL (EWR)

# RNAV (RNP) Z RWY 4R

NE-2, 10 JUL 2025 to 07 AUG 2025

NE-2, 10 JUL 2025 to 07 AUG 2025

AUTHORIZATION REQUIRED

TDZ/CL All Rwy's  
REIL Rwy's 11, 22R and 29  
HIRL All Rwy's

NEWARK, NEW JERSEY


AL-285 (FAA)

25219

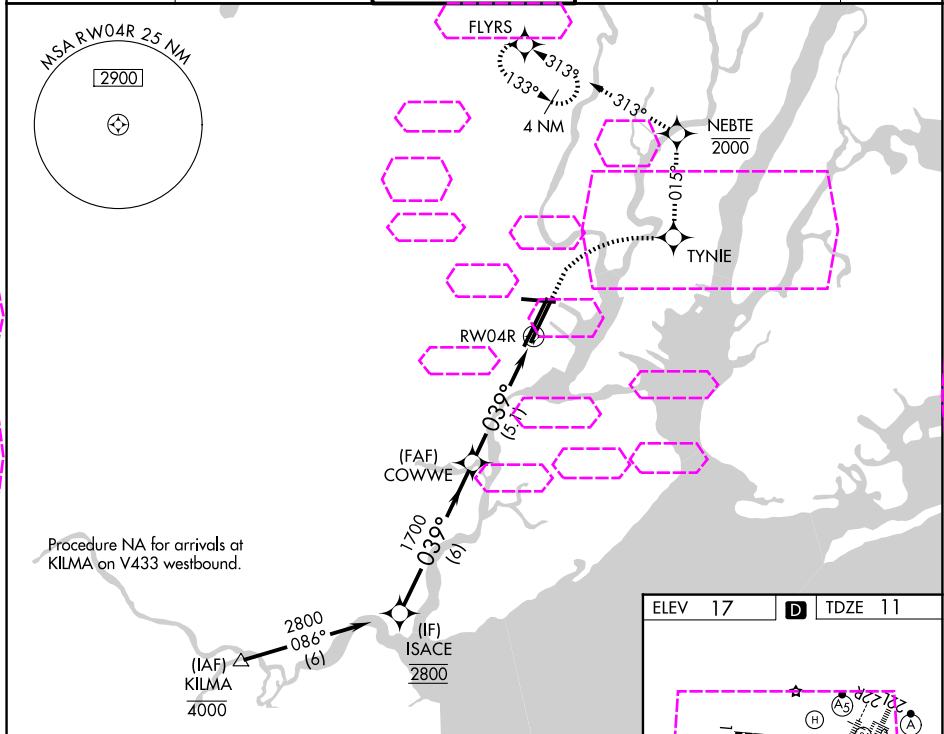
APP CRS	Rwy Ldg	8809
039°	TDZE	11
	Apt Elev	17

# RNAV (RNP) Z RWY 4R

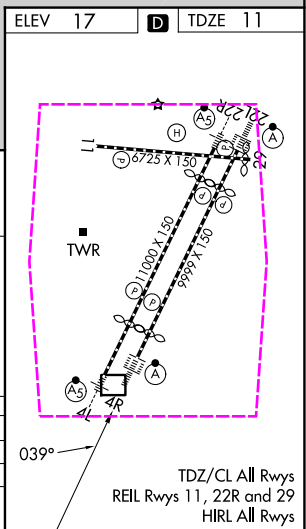
NEWARK LIBERTY INTL (EWR)

RNP AR APCH.	ALSF-2 	MISSED APPROACH: (Do not exceed 210K until NEBTE) Climb to 560 then climbing right turn to 2000 direct TYNIE and left turn on track 015° to NEBTE, cross NEBTE at or below 2000 then climbing left turn to 3000 on track 313° to FLYRS and hold, continue climb-in-hold to 3000. * Missed approach requires minimum climb of 351 feet per NM to 660.
RADAR required.		
<p><b>T</b> For uncompensated Baro-VNAV systems, procedure NA below -12°C or above 54°C. For inop ALS, increase RNP 0.30 all Cats visibility to 1½ SM.</p>		

D-ATIS	NEWARK APP CON	NEWARK TOWER	GND CON	CLNC DEL	CPDLC
115.7 134.825	128.55 379.9	118.3 257.6	121.8	118.85	



ISACE	560	2000	TYNIE	tr 015°	NEBTE 2000	3000	FLYRS
GP 3.04° TCH 55	2800	1700	1700	039°	039°	039°	039°
	6 NM	5.1 NM					
CATEGORY	A	B	C	D			
RNP 0.15 DA*		396/35	385 (400-½)				
RNP 0.30 DA		490/50	479 (500-1)				
AUTHORIZATION REQUIRED							



NEWARK, NEW JERSEY  
Amdt 1 15JUN23

40°42'N-74°10'W

NEWARK LIBERTY INTL (EWR)

# RNAV (RNP) Z RWY 4R

NE-2, 07 AUG 2025 to 04 SEP 2025

NE-2, 07 AUG 2025 to 04 SEP 2025