

NEWARK, NEW JERSEY

AL-285 (FAA)

25107

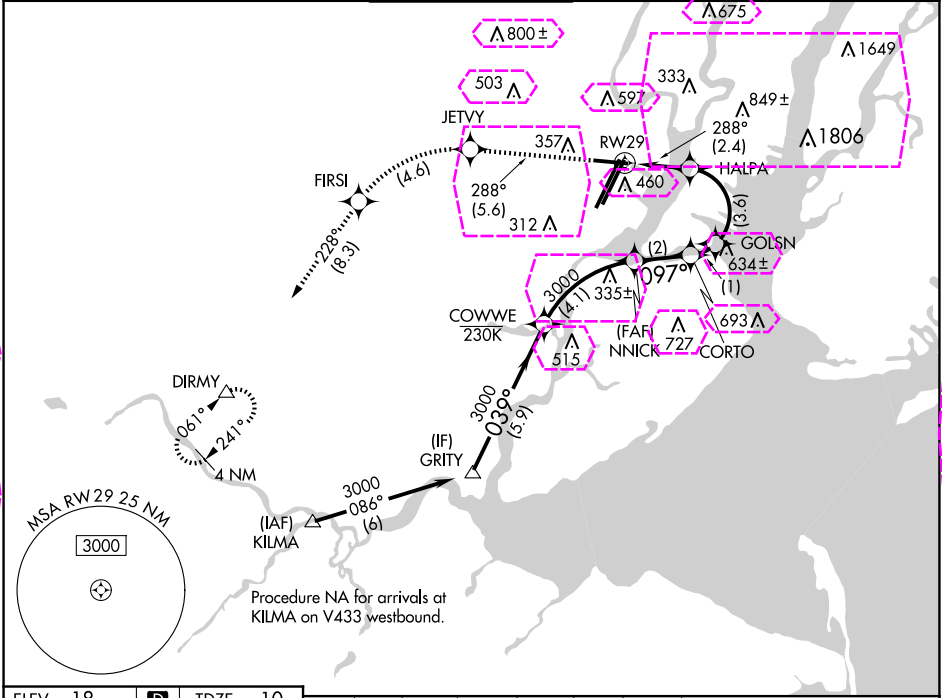
APP CRS	Rwy Idg	6501
288°	TDZE	10
	Apt Elev	18

RNAV (RNP) Z RWY 29

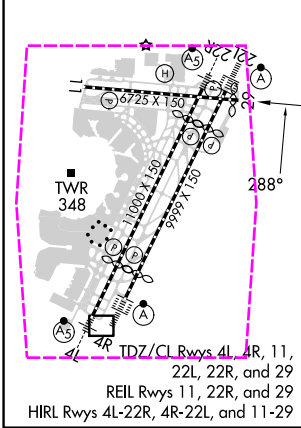
NEWARK LIBERTY INTL (EWR)

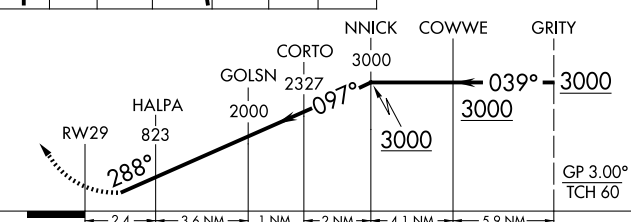
RNP AR APCH. RF required.		MISSED APPROACH: Climb to 3000 on track 288° to JETVY and left turn to FIRSI, and on track 228° to DIRMY and hold.
▼	Straight-in Rwy 29 at night, operational VGSI required, remain on or above VGSI glidepath until threshold. For uncompensated Baro-VNAV systems, procedure NA below -14°C or above 54°C.	
▲ NA	* Missed approach requires minimum climb of 340 feet per NM to 800.	

D-ATIS	NEWARK APP CON	NEWARK TOWER	GND CON	CLNC DEL	CPDLC
115.7 134.825	128.55 379.9	118.3 257.6	121.8	118.85	



ELEV 18	D	TDZE 10
---------	---	---------



3000	↑ tr 288°	JETVY	↙	FIRSI	↑ tr 228°	DIRMY
						
CATEGORY A B C D						
RNP 0.16 DA	466-1½	456 (500-1½)	NA	NA	NA	NA
*RNP 0.30 DA	485-1½	475 (500-1½)	NA	NA	NA	NA
RNP 0.30 DA	573-2	563 (600-2)	NA	NA	NA	NA

AUTHORIZATION REQUIRED

NE-2, 07 AUG 2025 to 04 SEP 2025