

NEWARK, NEW JERSEY

AL-285 (FAA)

25107

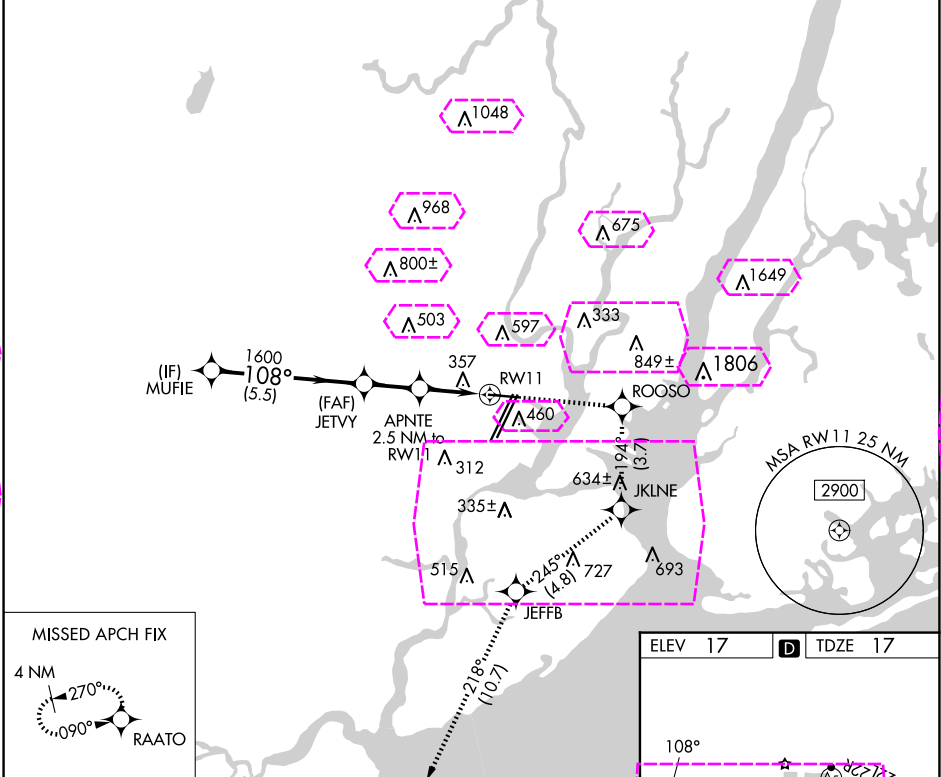
APP CRS	Rwy Idg	6725
108°	TDZE	17
	Apt Elev	17

# RNAV (GPS) RWY 11

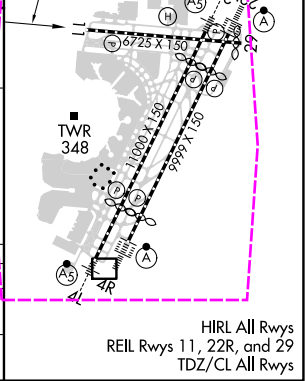
NEWARK LIBERTY INTL (EWR)

RNP APCH - GPS.	MISSED APPROACH: (Do not exceed 230K until JKLNE) Climb to 2000 direct ROOSO and right turn on track 194° to JKLNE and right turn on track 245° to JEFFB and left turn on track 218° to RAATO and hold.
▼ Circling NA south of Rwy 11-29. When Circling to Rwy 29 at night, operational VGSI required, remain on or above VGSI glidepath until threshold. Rwy 11 helicopter visibility reduction below RVR 4000 NA.	

D-ATIS	NEWARK APP CON	NEWARK TOWER	GND CON	CLNC DEL	CPDLC
115.7 134.825	128.55 379.9	118.3 257.6	121.8	118.85	



MUFIE	2000	ROOSO	JKLNE	JEFFB	RAATO
108°	↑	tr 194°	tr 245°	tr 218°	
2000		JETVY	APNTE 2.5 NM to RW11	1.7 NM to RW11	
1600		TCH 60			
920					
5.5 NM	2 NM	0.8 NM	1.7		
CATEGORY	A	B	C	D	
LNAV MDA	620/55	603 (700-1)	620-1¾	603 (700-1¾)	
CIRCLING	660-1	643 (700-1)	900-2¾ 883 (900-2¾)	900-3 883 (900-3)	



NEWARK, NEW JERSEY  
Amdt 1 15JUN23

40°42'N-74°10'W

# NEWARK LIBERTY INTL (EWR)

## RNAV (GPS) RWY 11

NE-2, 07 AUG 2025 to 04 SEP 2025