

LOC/DME I-EWR	APP CRS	Rwy Idg	4L 3459	4R 8809
<u>110.75</u>	039°	TDZE	10	11
Chan 44 (Y)		Apt Elev	17	17

ILS Z or LOC Z RWY 4L
NEWARK LIBERTY INTL (EWR)

RNP APCH - GPS.

DME and RADAR required.

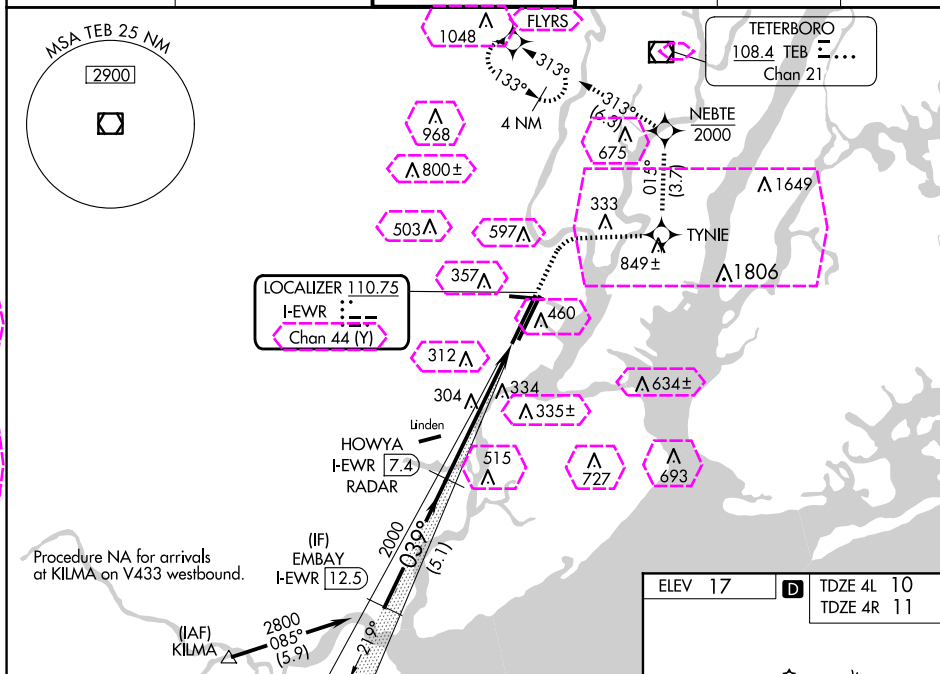
T When Circling to Rwy 29 at night, operational VGSI required, remain on or above VGSI glidepath until threshold. For inop ALS, increase sidestep 4R Cat C visibility to 1½ SM.

4L
MALS

4R
ALSF-2

MISSED APPROACH: (Do not exceed 210K until NEBTE) Climb to 520, then climbing right turn to 2000 direct TYNIE and on track 015° to NEBTE, cross NEBTE at or below 2000, then climbing left turn to 3000 on track 313° to FLYRS and hold, continue climb-in-hold to 3000.

D-ATIS	NEWARK APP CON	NEWARK TOWER	GND CON	CLNC DEL	CPDLC
115.7 134.825	128.55 379.9	118.3 257.6	121.8	118.85	



VGSI and ILS glidepath not coincident
(VGSI Angle 3.10/TCH 77).

EMBAY
I-EWR 12.5
$$\frac{2800}{1} - 03$$
$$\frac{.10^\circ}{57}$$

2000

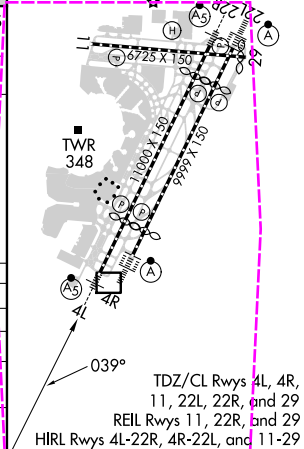
I-EWR 7.4 RADAR

2000

3

16

CATEGORY	A	B	C	D
S-LS 4L	210/18 200 (200-½)			
S-LOC 4L	560/24 550 (600-½)		560/60 550 (600-1¼)	
SIDESTEP 4R	600/55	589 (600-1)	600/60 589 (600-1¼)	600-1½ 589 (600-1½)
C CIRCLING	760-1	743 (800-1)	900-2¼ 883 (900-2¾)	900-3 883 (900-3)

NEWARK, NEW JERSEY
Amdt 16 15JUN23

40°42'N-74°10'W

NEWARK LIBERTY INTL (EWR)

ILS Z or LOC Z RWY 4L

NE-2, 10 JUL 2025 to 07 AUG 2025

NE-2, 10 JUL 2025 to 07 AUG 2025

NEWARK, NEW JERSEY

AL-285 (FAA)

25219

LOC/DME I-EWR	APP CRS	Rwy Ldg	4L	4R
110.75	039°	3459	8809	
Chan 44 (Y)		TDZE	10	11
		Apt Elev	17	17

ILS Z or LOC Z RWY 4L

NEWARK LIBERTY INTL (EWR)

RNP APCH - GPS.

DME and RADAR required.

▼

⚠

When Circling to Rwy 29 at night, operational VGSI required, remain on or above VGSI glidepath until threshold. For inop ALS, increase sidestep 4R Cat C visibility to 1½ SM.

4L

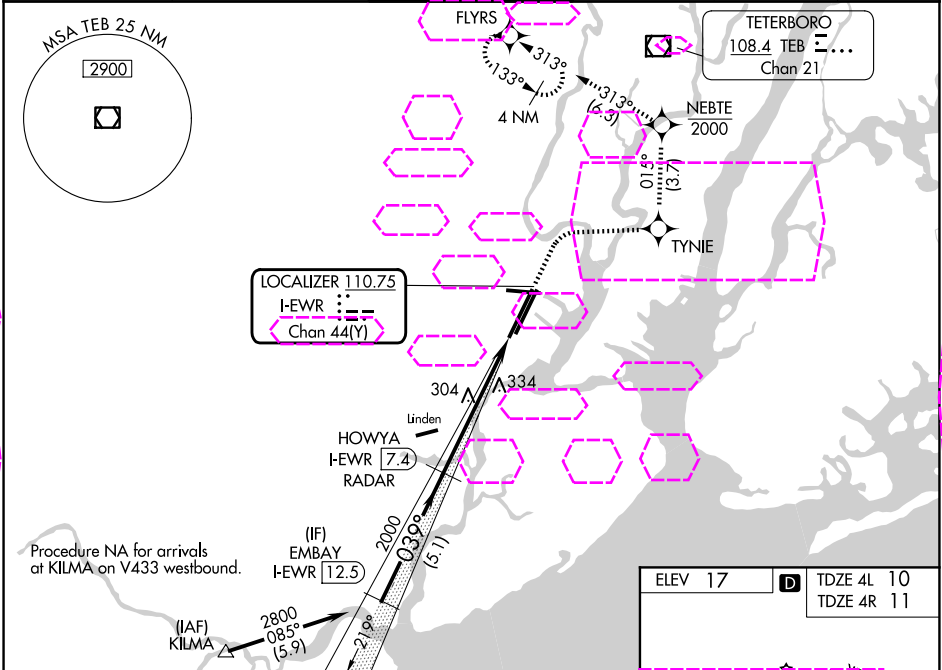
4R

MALSR

ALSF-2

MISSED APPROACH: (Do not exceed 210K until NEBTE) Climb to 520, then climbing right turn to 2000 direct TYNIE and on track 015° to NEBTE, cross NEBTE at or below 2000, then climbing left turn to 3000 on track 313° to FLYRS and hold, continue climb-in-hold to 3000.

D-ATIS	NEWARK APP CON	NEWARK TOWER	GND CON	CLNC DEL	CPDLC
115.7 134.825	128.55 379.9	118.3 257.6	121.8	118.85	



VGSI and ILS glidepath not coincident (VGSI Angle 3.10/TCH 77).	520	2000	TYNIE	tr 015°	NEBTE	3000	FLYRS
EMBAY I-EWR 12.5	↑	↑	↑	↑	↑	↑	↑
HOWYA I-EWR 7.4 RADAR	↑	↑	↑	↑	↑	↑	↑
2800 039°	2000	2000	2000	2000	2000	2000	2000
GS 3.10° TCH 57	5.1 NM	4.4 NM	1.4 NM				
CATEGORY	A	B	C	D			
S-ILS 4L	210/18	200 (200-½)					
S-LOC 4L	560/24	550 (600-½)	560/60	550 (600-1¼)			
SIDESTEP 4R	600/55	589 (600-1)	600/60	589 (600-1¼)	600-1½	589 (600-1½)	
CIRCLING	760-1	743 (800-1)	900-2¾	883 (900-2¾)	900-3	883 (900-3)	