


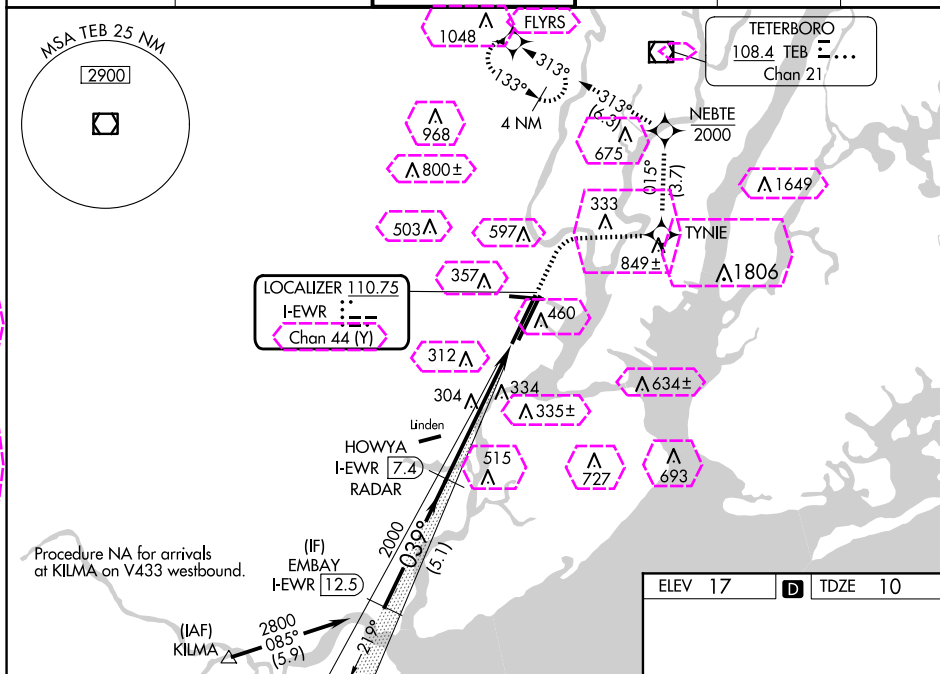


LOC/DME I-EWR	APP CRS	Rwy Idg	8459
<u>110.75</u>	<b>039°</b>	TDZE	10
Chan <b>44</b> (Y)		Apt Elev	17

**ILS Z RWY 4L (SA CAT I & II)**  
NEWARK LIBERTY INTL (EWR)

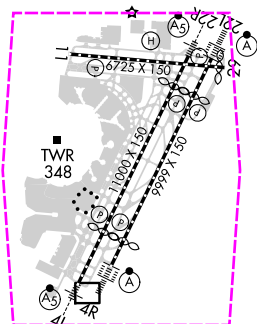
RNP APCH - GPS.			<p>MISSED APPROACH: (Do not exceed 210K until NEBTE) Climb to 520, then climbing right turn to 2000 direct TYNIE and on track 015° to NEBTE, cross NEBTE at or below 2000, then climbing left turn to 3000 on track 313° to FLYRS and hold, continue climb-in-hold to 3000.</p>
DME and RADAR required.			
	SA CAT I: Requires specific OPSPEC, MSPEC, or LOA approval and use of HUD to DH.		
	SA CAT II: Reduced lighting: requires specific OPSPEC, MSPEC, or LOA approval and use of autoland or HUD to touchdown.		

D-ATIS	NEWARK APP CON	NEWARK TOWER	GND CON	CLNC DEL	CPDLC
115.7 134.825	128.55 379.9	118.3 257.6	121.8	118.85	



CATEGORY	A	B	C	D
S-ILS 4L	SA CAT I	RA 150/14	150	DA 160
S-ILS 4L	SA CAT II	RA 100/12	100	DA 110

SA CATEGORY I & II ILS - SPECIAL AIRCREW  
& AIRCRAFT CERTIFICATION REQUIRED



TDZ/CL Rwy 4L, 4R,  
11, 22L, 22R, and 29  
REIL Rwy 11, 22R, and 29  
HIRL Rwy 4L-22R, 4R-22L, and 11-29

NEWARK, NEW JERSEY

AL-285 (FAA)

25219

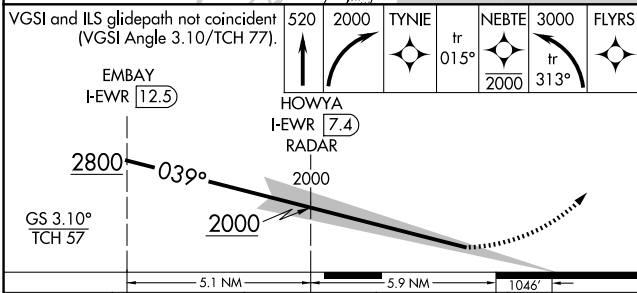
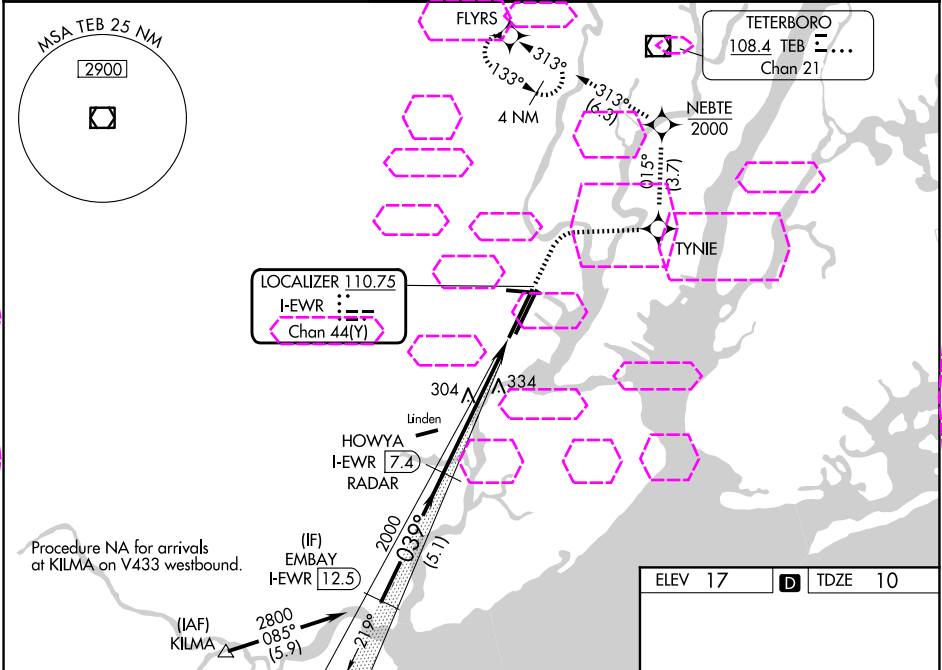
LOC/DME I-EWR	APP CRS	Rwy Ldg	3459
110.75	039°	TDZE	10
Chan 44 (Y)		Apt Elev	17

ILS Z RWY 4L (SA CAT I & II)  
NEWARK LIBERTY INTL (EWR)

RNP APCH - GPS.  
DME and RADAR required.  
SA CAT I: Requires specific OPSPEC, MSPEC, or LOA approval and use of HUD to DH.  
SA CAT II: Reduced lighting: requires specific OPSPEC, MSPEC, or LOA approval and use of autoland or HUD to touchdown.

MALSR  
MISSED APPROACH: (Do not exceed 210K until NEBTE) Climb to 520, then climbing right turn to 2000 direct TYNIE and on track 015° to NEBTE, cross NEBTE at or below 2000, then climbing left turn to 3000 on track 313° to FLYRS and hold, continue climb-in-hold to 3000.

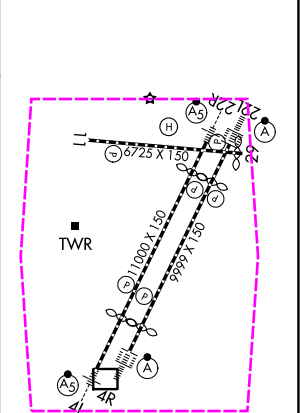
D-ATIS	NEWARK APP CON	NEWARK TOWER	GND CON	CLNC DEL	CPDLC
115.7 134.825	128.55 379.9	118.3 257.6	121.8	118.85	



CATEGORY	A	B	C	D
S-ILS 4L	SA CAT I	RA 150/14	150 DA 160	
S-ILS 4L	SA CAT II	RA 100/12	100 DA 110	

SA CATEGORY I & II ILS - SPECIAL AIRCREW & AIRCRAFT CERTIFICATION REQUIRED

ELEV 17	TDZE 10
---------	---------



TDZ/CL Rwy's 4L, 4R, 11, 22L, 22R, and 29  
REIL Rwy's 11, 22R, and 29  
HIRL Rwy's 4L-22R, 4R-22L, and 11-29

NEWARK, NEW JERSEY  
Amdt 16 15JUN23

40°42'N-74°10'W

NEWARK LIBERTY INTL (EWR)

ILS Z RWY 4L (SA CAT I & II)

NE-2, 07 AUG 2025 to 04 SEP 2025

NE-2, 07 AUG 2025 to 04 SEP 2025