

NEWARK, NEW JERSEY

AL-285 (FAA)

25107

LOC/DME I-EZA	APP CRS	Rwy Idg	4R	4L
108.7	039°	809	8459	
Chan 24		TDZE	11	10
		Apt Elev	17	17

ILS or LOC RWY 4R

NEWARK LIBERTY INTL (EWR)

RNP APCH - GPS.
RADAR required.

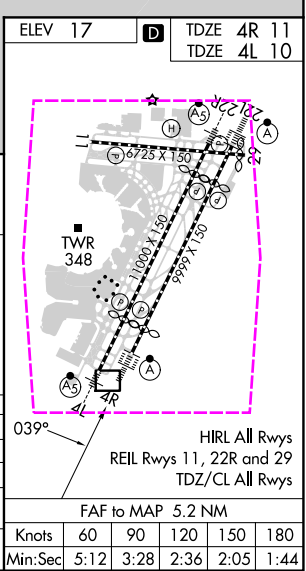
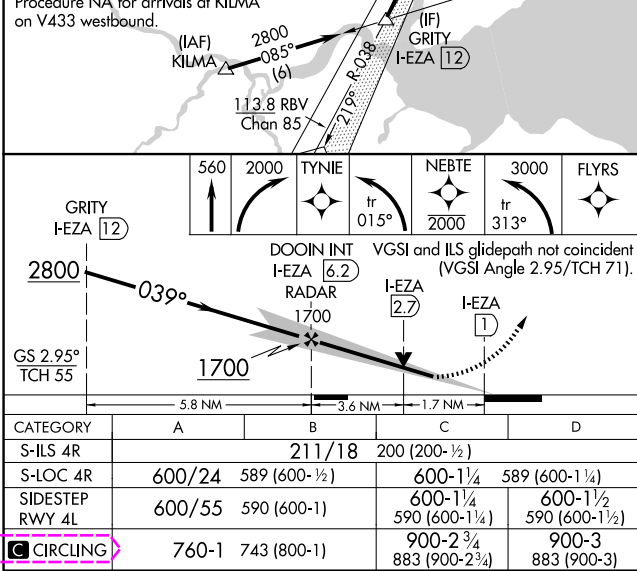
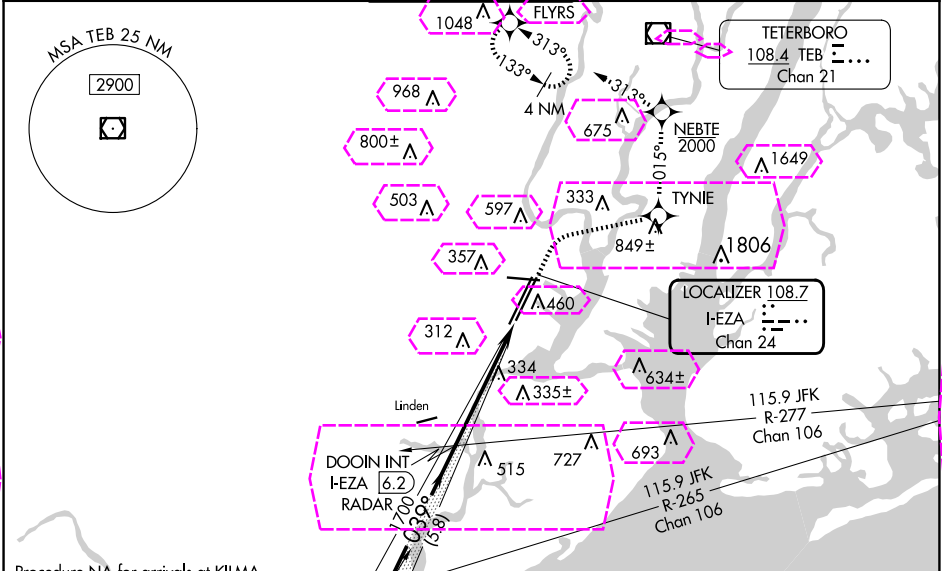
When Circling to Rwy 29 at night, operational VGSI required, remain on or above VGSI glidepath until threshold. For inop ALS, increase Sidestep 4L Cat C visibility to 1½ SM.

4R ALSF-2

4L MALSR

MISSED APPROACH: (Do not exceed 210K until NEBTE) Climb to 560 then climbing right turn to 2000 direct TYNIE and left turn on track 015° to NEBTE, cross NEBTE at or below 2000 then climbing left turn to 3000 on track 313° to FLYRS and hold, continue climb-in-hold to 3000.

D-ATIS	NEWARK APP CON	NEWARK TOWER	GND CON	CLNC DEL	CPDLC
115.7 134.825	128.55 379.9	118.3 257.6	121.8	118.85	



NEWARK, NEW JERSEY
Amdt 14 15JUN23

40°42'N-74°10'W

ILS or LOC RWY 4R

NEWARK, NEW JERSEY

AL-285 (FAA)

25219

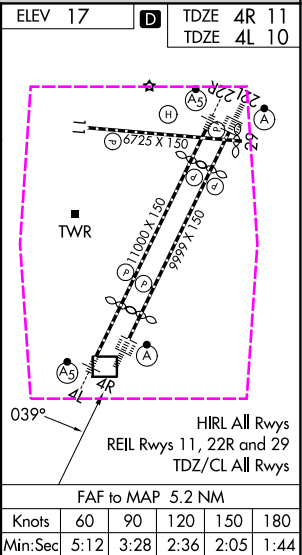
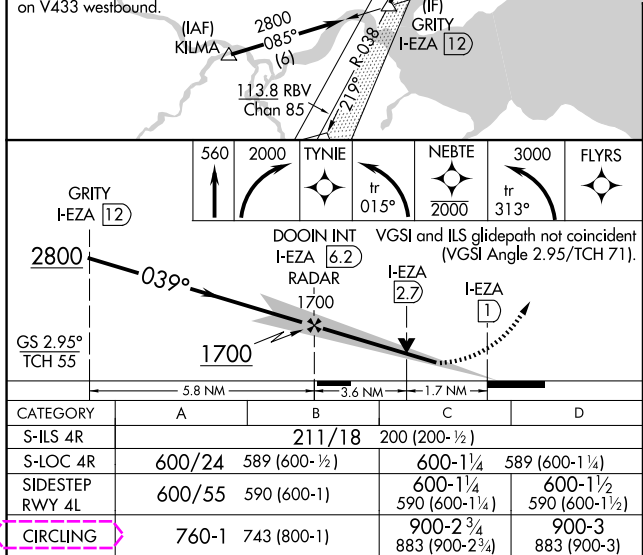
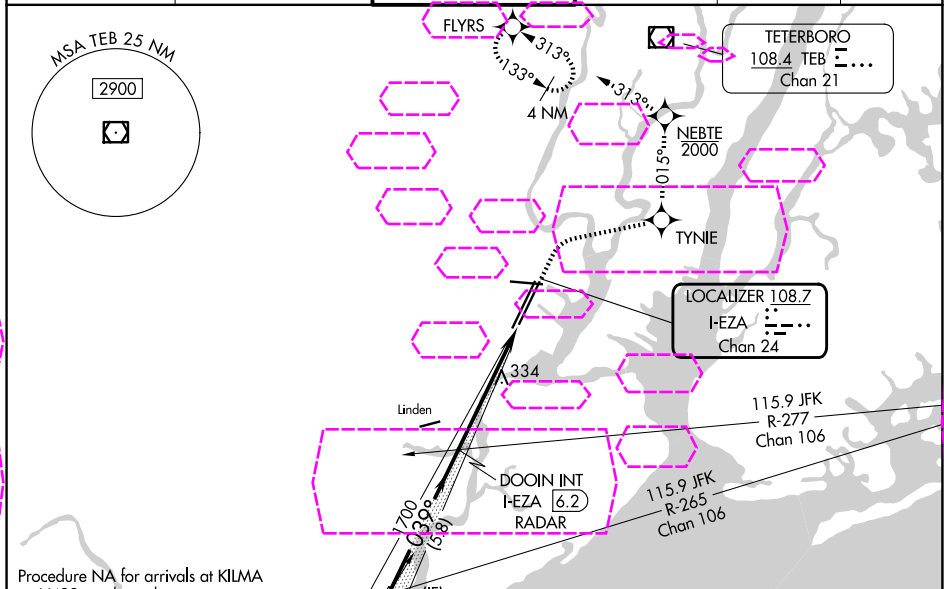
LOC/DME I-EZA	APP CRS	Rwy Ldg	4R	4L
108.7	039°	809	8459	
Chan 24		TDZE	11	10
		Apt Elev	17	17

ILS or LOC RWY 4R

NEWARK LIBERTY INTL (EWR)

RNP APCH - GPS. RADAR required.	4R ALSF-2	4L MALSR	MISSED APPROACH: (Do not exceed 210K until NEBTE) Climb to 560 then climbing right turn to 2000 direct TYNIE and left turn on track 015° to NEBTE, cross NEBTE at or below 2000 then climbing left turn to 3000 on track 313° to FLYRS and hold, continue climb-in-hold to 3000.
When Circling to Rwy 29 at night, operational VGSI required, remain on or above VGSI glidepath until threshold. For inop ALS, increase Sidestep 4L Cat C visibility to 1½ SM.			

D-ATIS	NEWARK APP CON	NEWARK TOWER	GND CON	CLNC DEL	CPDLC
115.7 134.825	128.55 379.9	118.3 257.6	121.8	118.85	



NEWARK, NEW JERSEY
Amdt 14 15JUN23

40°42'N-74°10'W

NEWARK LIBERTY INTL (EWR)
ILS or LOC RWY 4R

NE-2, 07 AUG 2025 to 04 SEP 2025

NE-2, 07 AUG 2025 to 04 SEP 2025