

NEWARK, NEW JERSEY

AL-285 (FAA)

25107

LOC/DME I-GPR	APP CRS	Rwy Idg
109.15	107°	6725
Chan 28 (Y)		TDZE 17
		Apt Elev 17

ILS or LOC RWY 11

NEWARK LIBERTY INTL (EWR)

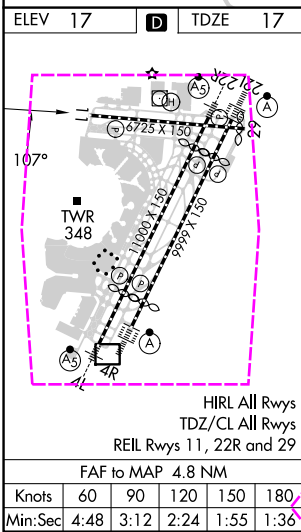
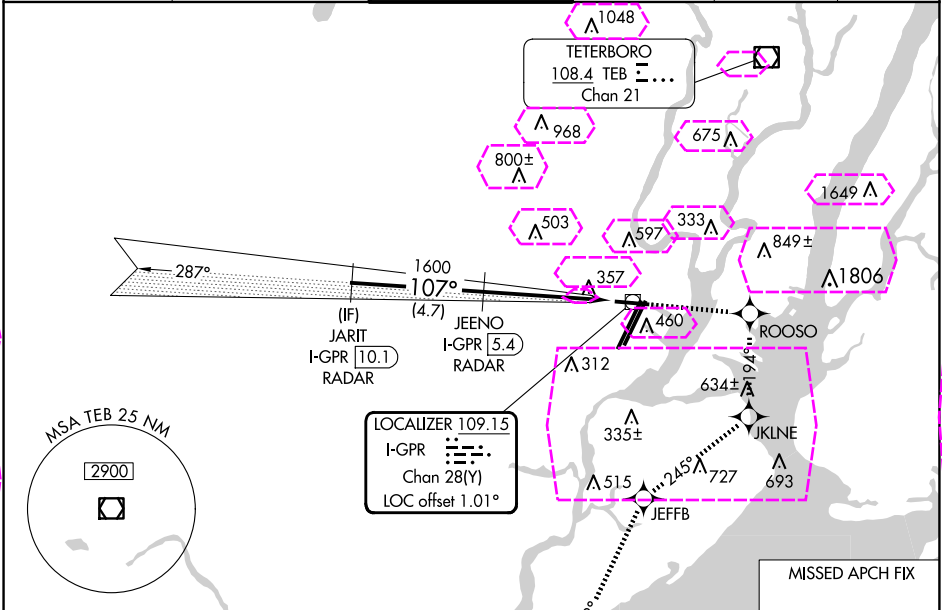
RNP APCH - GPS.

DME required. RADAR required.

⚠ Circling NA south of Rwy 11-29. When Circling to Rwy 29 at night, operational VGSi required, remain on or above VGSi glidepath until threshold. Rwy 11 helicopter visibility reduction below ¼ SM NA.

MISSED APPROACH: (Do not exceed 230K until JKLNE) Climb to 2000 direct ROOSO and right turn on track 194° to JKLNE and right turn on track 245° to JEFFB and left turn on track 218° to RAATO and hold.

D-ATIS	NEWARK APP CON	NEWARK TOWER	GND CON	CLNC DEL	CPDLC
115.7 134.825	128.55 379.9	118.3 257.6	121.8	118.85	



4 NM

RAATO

2000 ↑	ROOSO ✱	JKLINE tr 194° ↷	JEFFB tr 245° ↷	RAATO ✱
-----------	------------	------------------------	-----------------------	------------

JARIT I-GPR 10.1 RADAR

JEENO I-GPR 5.4 RADAR

VGSI and ILS glidepath not coincident (VGSI Angle 3.00/TCH 60).

GS 3.00° TCH 57

1600 107° 1600

4.7 NM 3.2 NM 1.6 NM

CATEGORY	A	B	C	D
S- ILS 11	618-1 ³ / ₄ 601 (700-1 ³ / ₄)			
S- LOC 11	660/55	643 (700-1)	660-1 ⁵ / ₈ 643 (700-1 ⁵ / ₈)	900-2 ³ / ₄ 900-2 ³ / ₄
CIRCLING	660-1	643 (700-1)	883 (900-2 ¹ / ₂) 883 (900-2 ¹ / ₂)	883 (900-2 ³ / ₄)

NEWARK, NEW JERSEY
Amdt 3 15JUN23

40°42'N-74°10'W

ILS or LOC RWY 11

NEWARK, NEW JERSEY

AL-285 (FAA)

25219

LOC/DME I-GPR	APP CRS	Rwy Ldg
109.15	107°	6725
Chan 28 (Y)		TDZE 17
		Apt Elev 17

ILS or LOC RWY 11

NEWARK LIBERTY INTL (EWR)

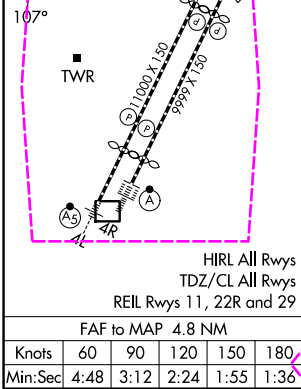
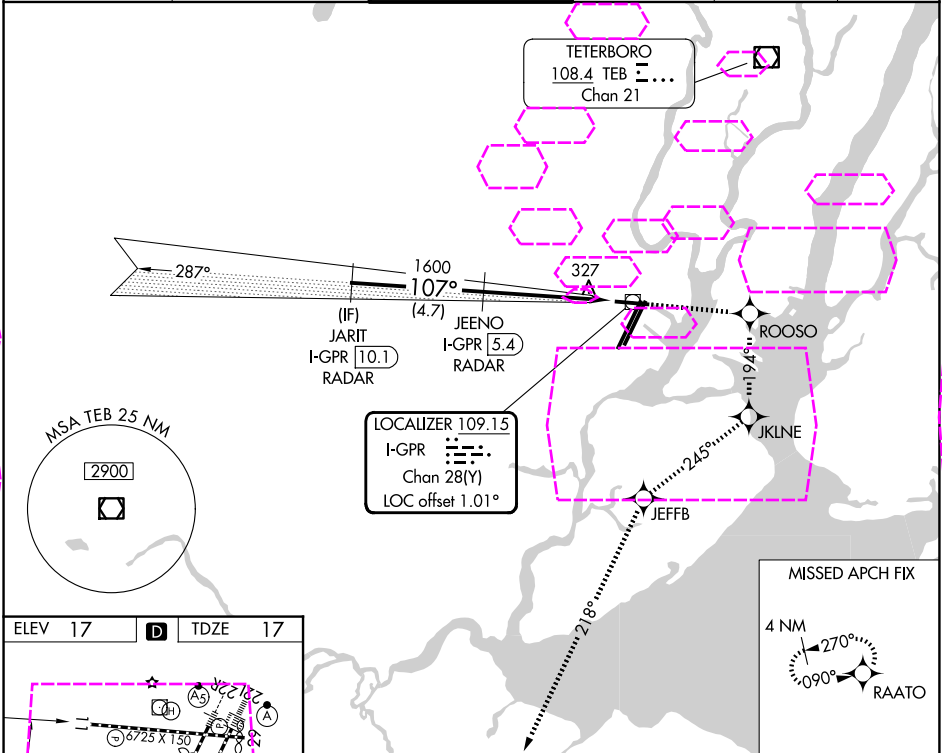
RNP APCH - GPS.

DME required. RADAR required.

⚠ Circling NA south of Rwy 11-29. When Circling to Rwy 29 at night, operational VGSI required, remain on or above VGSI glidepath until threshold. Rwy 11 helicopter visibility reduction below ¼ SM NA.

MISSED APPROACH: (Do not exceed 230K until JKLNE) Climb to 2000 direct ROOSO and right turn on track 194° to JKLNE and right turn on track 245° to JEFFB and left turn on track 218° to RAATO and hold.

D-ATIS	NEWARK APP CON	NEWARK TOWER	GND CON	CLNC DEL	CPDLC
115.7 134.825	128.55 379.9	118.3 257.6	121.8	118.85	



<div><div><div>2000</div><div>↑</div></div><div><div>ROOSO</div><div>✧</div></div><div><div><div>tr</div><div>194°</div></div><div><div>JKLNE</div><div>✧</div></div><div><div><div>tr</div><div>245°</div></div><div><div>JEFFB</div><div>✧</div></div><div><div><div>tr</div><div>218°</div></div><div><div>RAATO</div><div>✧</div></div></div></div></div></div>				
<div><div>JARIT</div><div>I-GPR 10.1</div><div>RADAR</div></div> <div><div>JEENO</div><div>I-GPR 5.4</div><div>RADAR</div></div> <div><div>VGSI and ILS glidepath not coincident</div><div>(VGSI Angle 3.00/TCH 60).</div></div>				
<div><div>1600</div><div>107°</div><div>1600</div><div>I-GPR 2.2</div><div>I-GPR 0.6</div><div>GS 3.00°</div><div>TCH 57</div><div>4.7 NM</div><div>3.2 NM</div><div>1.6 NM</div></div>				
CATEGORY	A	B	C	D
S- ILS 11	618-1 ³ / ₄ 601 (700-1 ³ / ₄)			
S- LOC 11	660/55	643 (700-1)	660-1 ⁵ / ₈ 643 (700-1 ⁵ / ₈)	900-2 ¹ / ₂ 900-2 ³ / ₄
CIRCLING	660-1	643 (700-1)	883 (900-2 ¹ / ₂)	883 (900-2 ³ / ₄)

NEWARK, NEW JERSEY
Amdt 3 15JUN23

40°42'N-74°10'W

ILS or LOC RWY 11

NE-2, 07 AUG 2025 to 04 SEP 2025

NE-2, 07 AUG 2025 to 04 SEP 2025