

NEWARK, NEW JERSEY

AL-285 (FAA)

25107

| | | | |
|---------------|---------|----------|------|
| LOC/DME I-EZA | APP CRS | Rwy Idg | 8809 |
| 108.7 | 039° | TDZE | 11 |
| Chan 24 | | Apt Elev | 17 |

ILS RWY 4R (CAT II & III)

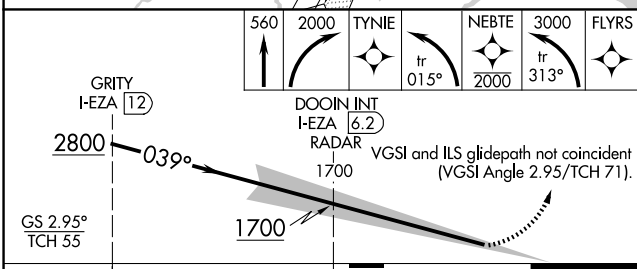
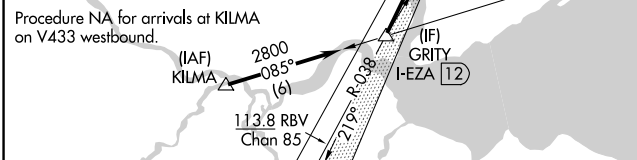
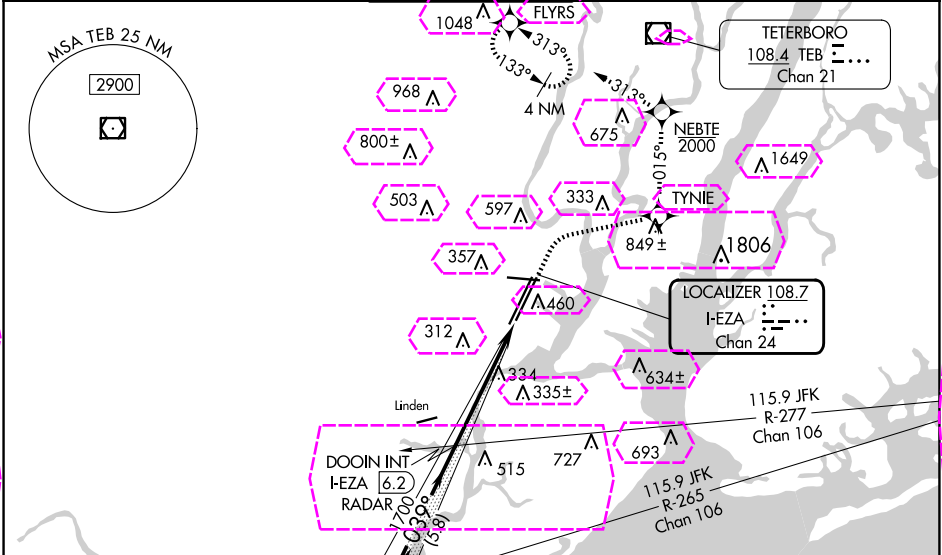
NEWARK LIBERTY INTL (EWR)

RNP APCH - GPS.
RADAR required.

ALSF-2

MISSED APPROACH: (Do not exceed 210K until NEBTE) Climb to 560 then climbing right turn to 2000 direct TYNIE and left turn on track 015° to NEBTE, cross NEBTE at or below 2000 then climbing left turn to 3000 on track 313° to FLYRS and hold, continue climb-in-hold to 3000.

| | | | | | |
|---------------|----------------|--------------|---------|----------|-------|
| D-ATIS | NEWARK APP CON | NEWARK TOWER | GND CON | CLNC DEL | CPDLC |
| 115.7 134.825 | 128.55 379.9 | 118.3 257.6 | 121.8 | 118.85 | |



| | | | | |
|----------|---------|-----------|-----|--------|
| CATEGORY | A | B | C | D |
| S-ILS 4R | CAT II | RA 100/12 | 100 | DA 111 |
| S-ILS 4R | CAT III | RVR 06 | | |

CATEGORY II & III ILS - SPECIAL AIRCREW & AIRCRAFT CERTIFICATION REQUIRED

ELEV 17 D TDZE 11

HIRL All Rwy's
REIL Rwy's 11, 22R, and 29
TDZ/CL All Rwy's

NEWARK, NEW JERSEY
Amdt 14 15JUN23

40°42'N-74°10'W

NEWARK LIBERTY INTL (EWR)

ILS RWY 4R (CAT II & III)

NE-2, 10 JUL 2025 to 07 AUG 2025

NE-2, 10 JUL 2025 to 07 AUG 2025

NEWARK, NEW JERSEY

AL-285 (FAA)

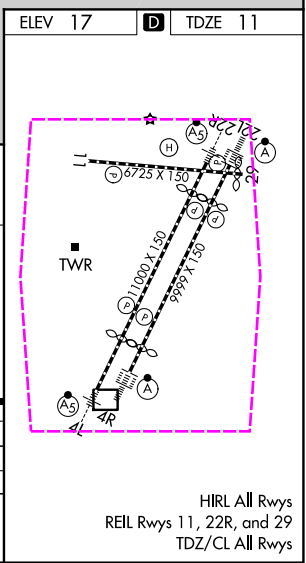
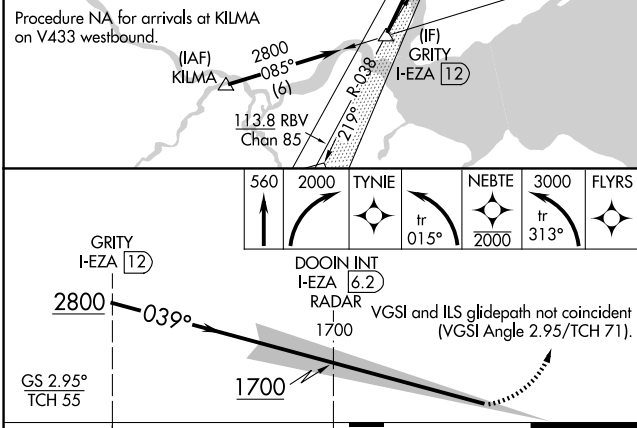
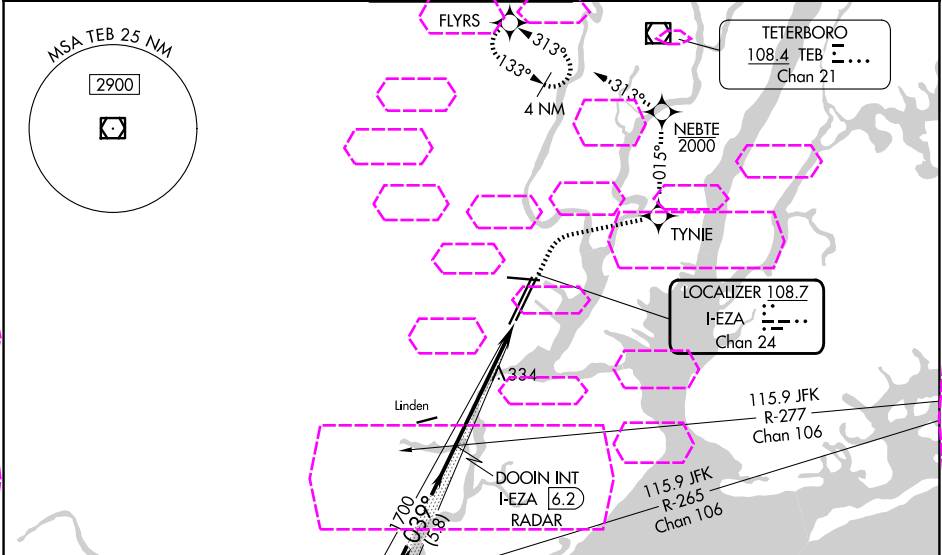
25219

| | | | |
|---------------|---------|----------|------|
| LOC/DME I-EZA | APP CRS | Rwy Ldg | 8809 |
| 108.7 | 039° | TDZE | 11 |
| Chan 24 | | Apt Elev | 17 |

ILS RWY 4R (CAT II & III)
NEWARK LIBERTY INTL (EWR)

| | | |
|------------------------------------|------------|--|
| RNP APCH - GPS. RADAR required. | ALSF-2 | MISSED APPROACH: (Do not exceed 210K until NEBTE) Climb to 560 then climbing right turn to 2000 direct TYNIE and left turn on track 015° to NEBTE, cross NEBTE at or below 2000 then climbing left turn to 3000 on track 313° to FLYRS and hold, continue climb-in-hold to 3000. |
|------------------------------------|------------|--|

| | | | | | |
|-------------------------|--------------------------------|-----------------------------|------------------|--------------------|-------|
| D-ATIS 115.7 134.825 | NEWARK APP CON 128.55 379.9 | NEWARK TOWER 118.3 257.6 | GND CON 121.8 | CLNC DEL 118.85 | CPDLC |
|-------------------------|--------------------------------|-----------------------------|------------------|--------------------|-------|



| | | | | |
|----------|---------|-----------|-----|--------|
| CATEGORY | A | B | C | D |
| S-ILS 4R | CAT II | RA 100/12 | 100 | DA 111 |
| S-ILS 4R | CAT III | RVR 06 | | |

CATEGORY II & III ILS - SPECIAL AIRCREW & AIRCRAFT CERTIFICATION REQUIRED

NEWARK, NEW JERSEY
Amdt 14 15JUN23

40°42'N-74°10'W

NEWARK LIBERTY INTL (EWR)

ILS RWY 4R (CAT II & III)

NE-2, 07 AUG 2025 to 04 SEP 2025

NE-2, 07 AUG 2025 to 04 SEP 2025