

NEWARK, NEW JERSEY

AL-285 (FAA)

25107

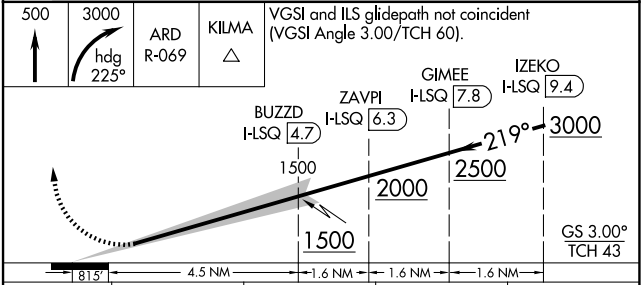
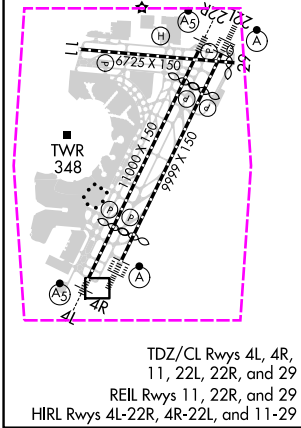
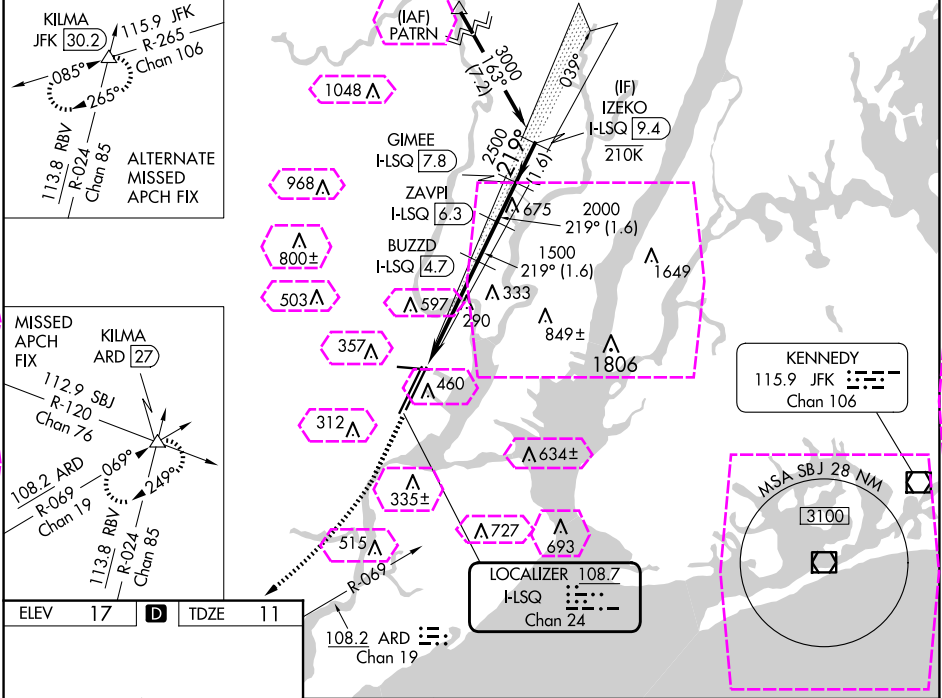
LOC/DME I-LSQ	APP CRS	Rwy Idg	8205
108.7	219°	TDZE	11
Chan 24		Apt Elev	17

ILS RWY 22L (SA CAT I)

NEWARK LIBERTY INTL (EWR)

RNP APCH - GPS.	ALSF-2	MISSED APPROACH: Climb to 500 then climbing right turn to 3000 on heading 225° and ARD VOR/DME R-069 to KILMA INT/ARD 27 DME and hold.
Aircraft not GPS equipped - RADAR required for procedure entry. DME required.		
Requires specific OPSPEC, MSPEC, or LOA approval.		

D-ATIS	NEWARK APP CON	NEWARK TOWER	GND CON	CLNC DEL	CPDLC
115.7 134.825	128.55 379.9	118.3 257.6	121.8	118.85	



CATEGORY	A	B	C	D
S-ILS 22L	RA 152/14	150	DA 161	

SA CATEGORY I ILS - SPECIAL AIRCREW & AIRCRAFT CERTIFICATION REQUIRED

NEWARK, NEW JERSEY
Amdt 14 23FEB23

40°42'N-74°10'W

NEWARK LIBERTY INTL (EWR)
ILS RWY 22L (SA CAT I)

NEWARK, NEW JERSEY

AL-285 (FAA)

25219

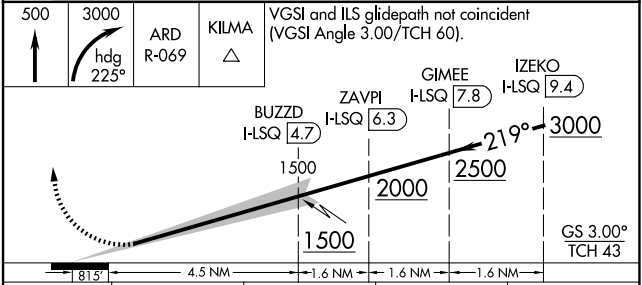
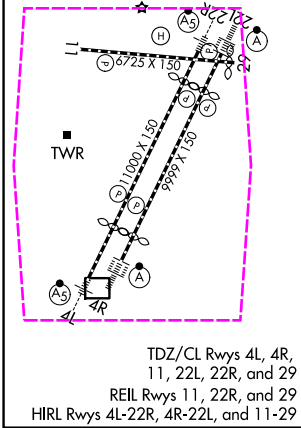
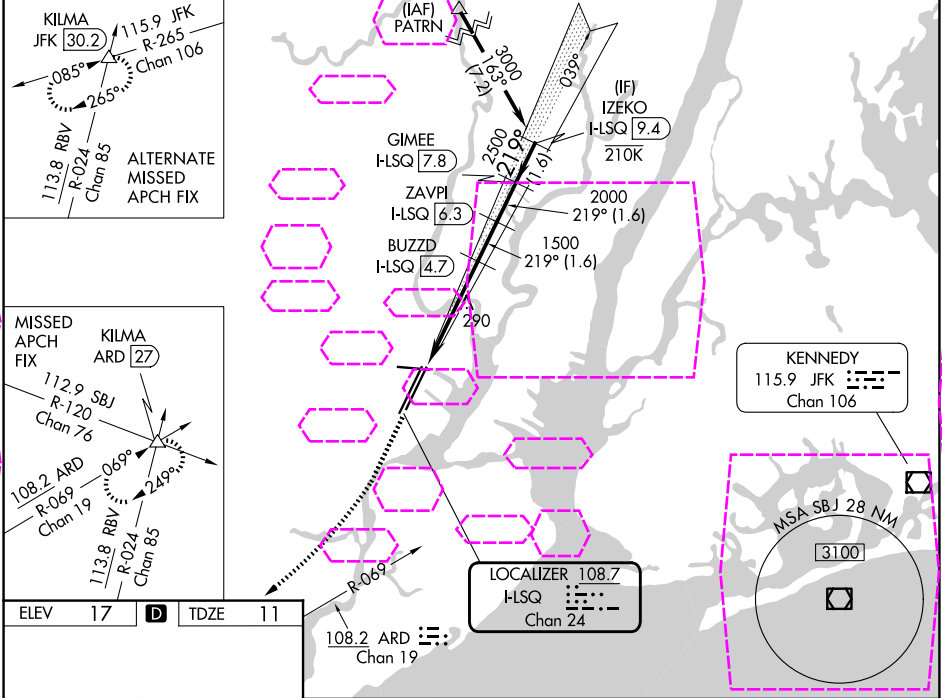
LOC/DME I-LSQ	APP CRS	Rwy Ldg	8205
108.7	219°	TDZE	11
Chan 24		Apt Elev	17

ILS RWY 22L (SA CAT I)

NEWARK LIBERTY INTL (EWR)

RNP APCH - GPS.	ALSF-2 	MISSED APPROACH: Climb to 500 then climbing right turn to 3000 on heading 225° and ARD VOR/DME R-069 to KILMA INT/ARD 27 DME and hold.
Aircraft not GPS equipped - RADAR required for procedure entry. DME required.		
Requires specific OPSPEC, MSPEC, or LOA approval.		

D-ATIS	NEWARK APP CON	NEWARK TOWER	GND CON	CLNC DEL	CPDLC
115.7 134.825	128.55 379.9	118.3 257.6	121.8	118.85	



CATEGORY	A	B	C	D
S-ILS 22L	RA 152/14 150 DA 161			

SA CATEGORY I ILS - SPECIAL AIRCREW & AIRCRAFT CERTIFICATION REQUIRED

NEWARK, NEW JERSEY
Amdt 14 23FEB23

40°42'N-74°10'W

NEWARK LIBERTY INTL (EWR)
ILS RWY 22L (SA CAT I)

NE-2, 07 AUG 2025 to 04 SEP 2025

NE-2, 07 AUG 2025 to 04 SEP 2025