

NEWARK, NEW JERSEY

AL-285 (FAA)

25107

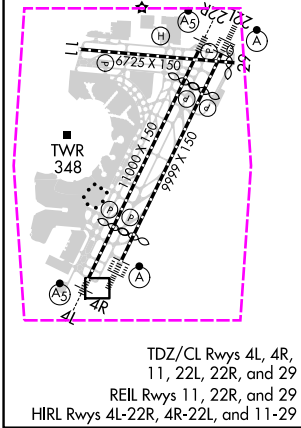
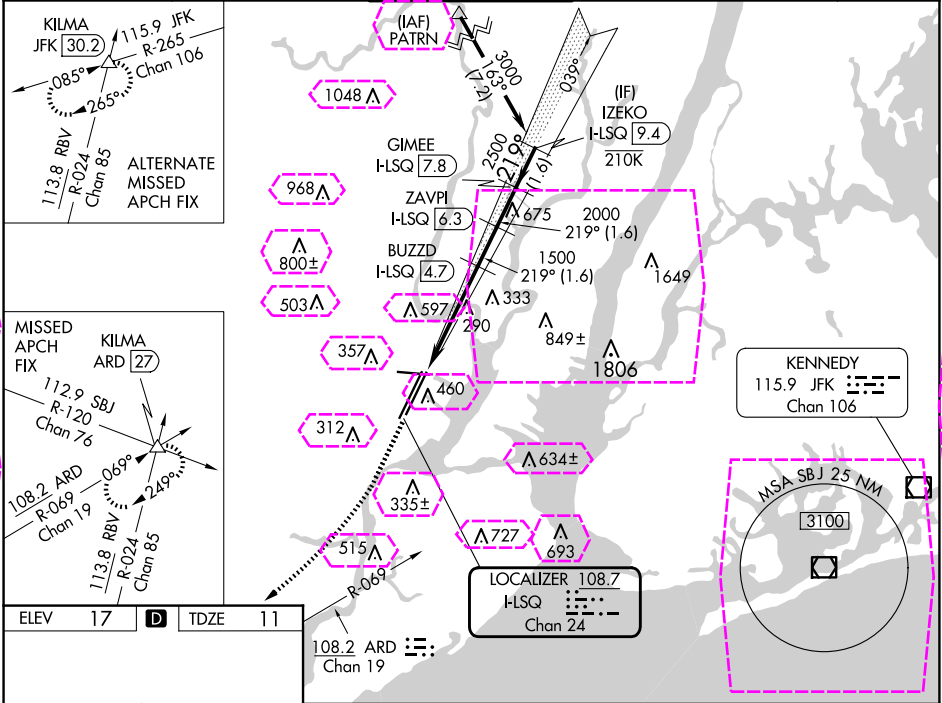
LOC/DME I-LSQ	APP CRS	Rwy Idg	8205
108.7	219°	TDZE	11
Chan 24		Apt Elev	17

ILS RWY 22L (CAT II & III)

NEWARK LIBERTY INTL (EWR)

RNP APCH - GPS.	ALSf-2	MISSED APPROACH: Climb to 500 then climbing right turn to 3000 on heading 225° and ARD VOR/DME R-069 to KILMA INT/ARD 27 DME and hold.
Aircraft not GPS equipped - RADAR required for procedure entry. DME required.		
▼ CAT II: RVR 1000 authorized with specific OPSPEC, MSPEC, or LOA approval and use of autoland or HUD to touchdown.		

D-ATIS	NEWARK APP CON	NEWARK TOWER	GND CON	CLNC DEL	CPDLC
115.7 134.825	128.55 379.9	118.3 257.6	121.8	118.85	



500	3000	ARD R-069	KILMA	VGSI and ILS glidepath not coincident (VGSI Angle 3.00/TCH 60).	IZEKO I-LSQ 9.4
↑	hdg 225°		△		
BUZZD I-LSQ 4.7, ZAVPI I-LSQ 6.3, GIMEE I-LSQ 7.8, 219° 3000					
1500, 2000, 2500, GS 3.00° TCH 43					
81° 4.5 NM 1.6 NM 1.6 NM 1.6 NM					
CATEGORY	A B C D				
S-ILS 22L	CAT II RA 102/12 100 DA 111				
S-ILS 22L	CAT III RVR 06				

CATEGORY II & III ILS - SPECIAL AIRCREW & AIRCRAFT CERTIFICATION REQUIRED

NEWARK, NEW JERSEY
Amdt 14 23FEB23

40°42'N-74°10'W

NEWARK LIBERTY INTL (EWR)
ILS RWY 22L (CAT II & III)

NE-2, 10 JUL 2025 to 07 AUG 2025

NE-2, 10 JUL 2025 to 07 AUG 2025

