

NEWARK, NEW JERSEY

AL-285 (FAA)

25107

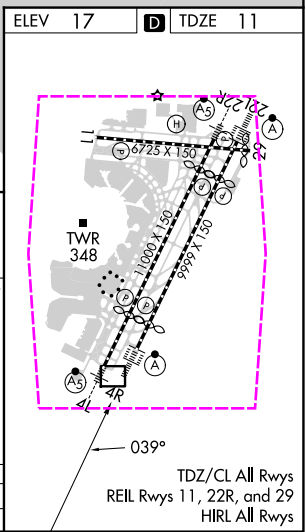
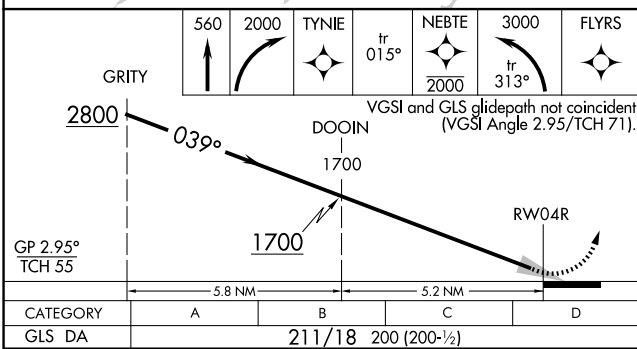
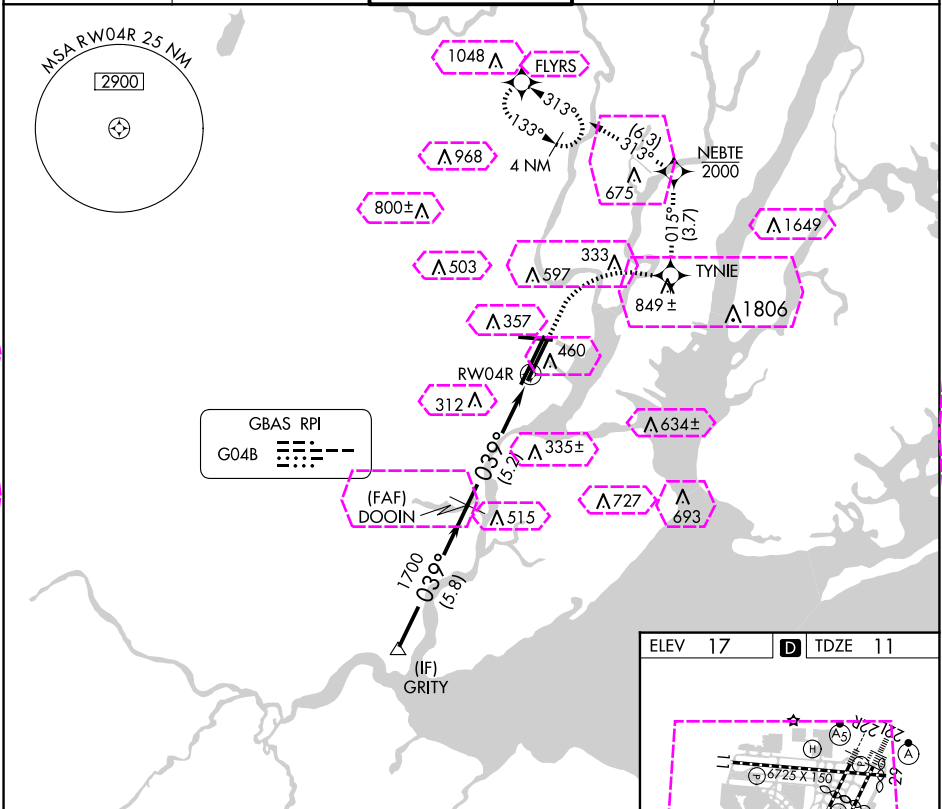
GBAS CH 21083 G04B	APP CRS 039°	Rwy Idg 8809 TDZE 11 Apt Elev 17
--	------------------------	---

GLS RWY 4R

NEWARK LIBERTY INTL (EWR)

RNP APCH - GPS. RADAR required. Autopilot coupled approach NA below 211.	ALSF-2 (A)	MISSED APPROACH: (Do not exceed 210K until NEBTE) Climb to 560 then climbing right turn to 2000 direct TYNIE and on track 015° to NEBTE, cross NEBTE at or below 2000 then climbing left turn to 3000 on track 313° to FLYRS and hold, continue climb-in-hold to 3000.
--	---------------	--

D-ATIS 115.7 134.825	NEWARK APP CON 128.55 379.9	NEWARK TOWER 118.3 257.6	GND CON 121.8	CLNC DEL 118.85	CPDLC
--------------------------------	---------------------------------------	------------------------------------	-------------------------	---------------------------	-------



GLS RWY 4R

NE-2, 10 JUL 2025 to 07 AUG 2025

NE-2, 10 JUL 2025 to 07 AUG 2025

NEWARK, NEW JERSEY

AL-285 (FAA)

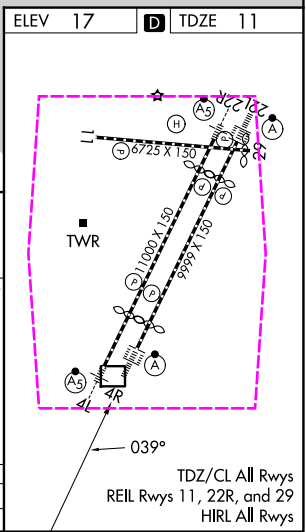
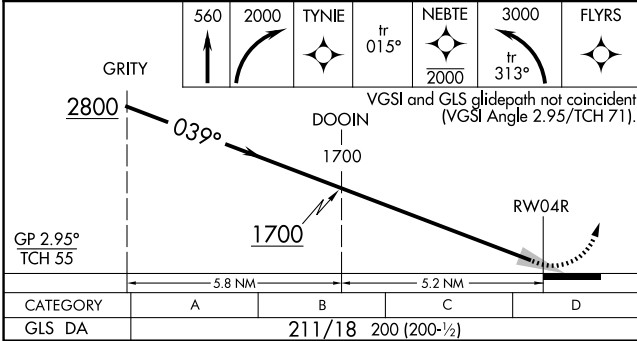
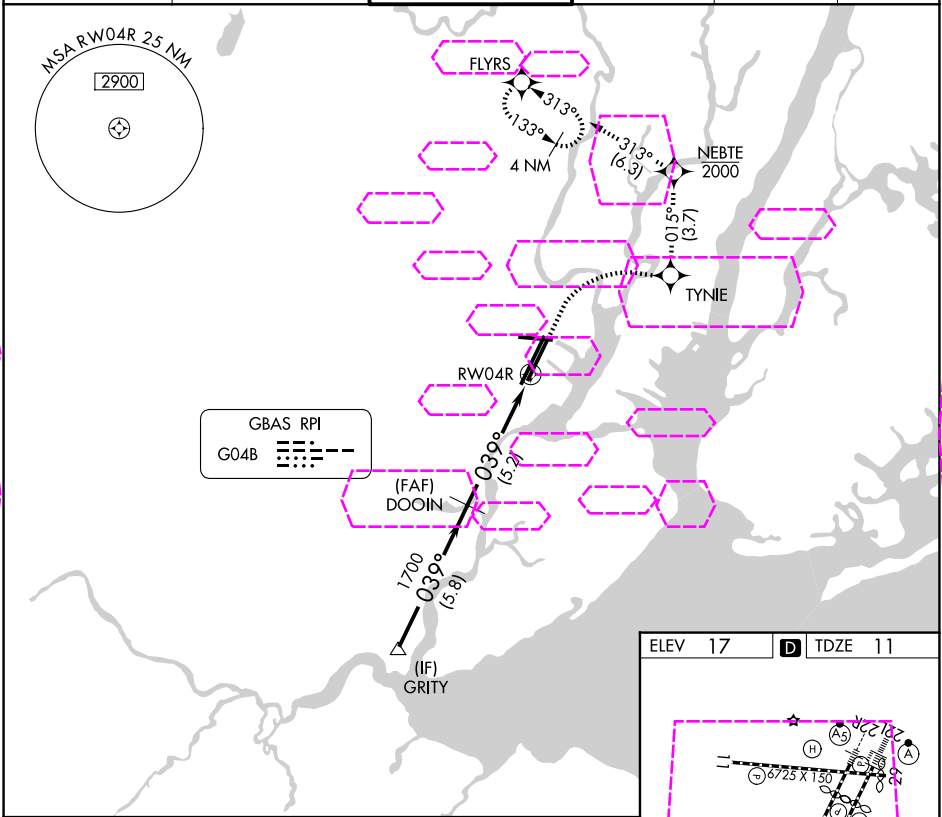
25219

GBAS CH 21083 G04B	APP CRS 039°	Rwy Ldg 8809 TDZE 11 Apt Elev 17
--	------------------------	---

GLS RWY 4R

NEWARK LIBERTY INTL (EWR)

RNP APCH - GPS.		ALSIF-2	MISSED APPROACH: (Do not exceed 210K until NEBTE) Climb to 560 then climbing right turn to 2000 direct TYNIE and on track 015° to NEBTE, cross NEBTE at or below 2000 then climbing left turn to 3000 on track 313° to FLYRS and hold, continue climb-in-hold to 3000.					
RADAR required.								
Autopilot coupled approach NA below 211.								
<div><div></div><div>NA</div></div>		<div><div></div><div></div></div>						
D-ATIS		NEWARK APP CON		NEWARK TOWER		GND CON	CLNC DEL	CPDLC
115.7 134.825		128.55 379.9		118.3 257.6		121.8	118.85	



NEWARK, NEW JERSEY
Amdt 2 15JUN23

40°42'N-74°10'W

NEWARK LIBERTY INTL (EWR)

GLS RWY 4R

NE-2, 07 AUG 2025 to 04 SEP 2025

NE-2, 07 AUG 2025 to 04 SEP 2025