

NEWARK, NEW JERSEY

AL-285 (FAA)

25107

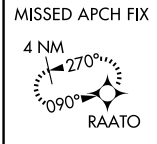
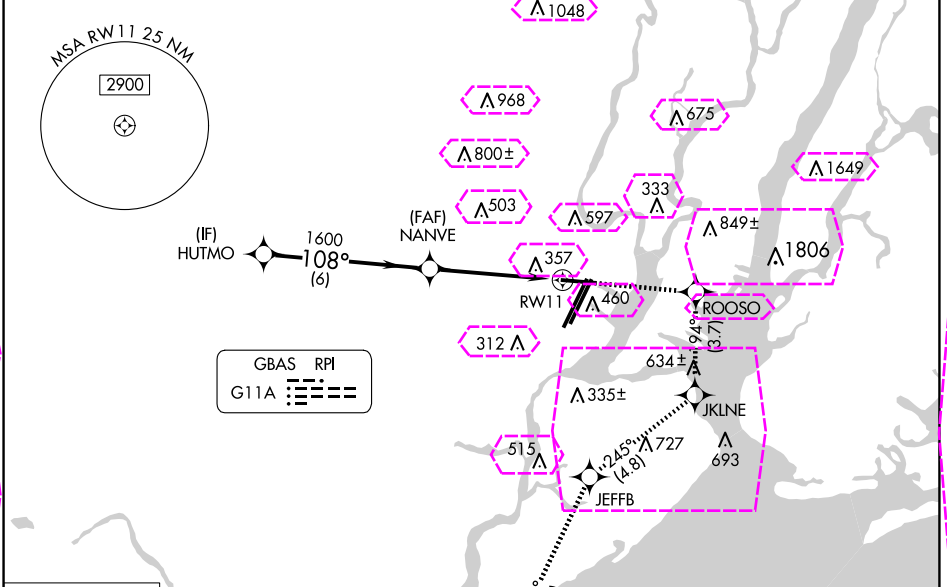
GBAS	APP CRS	Rwy Idg	6725
CH 21905	108°	TDZE	17
G11A		Apt Elev	17

# GLS RWY 11

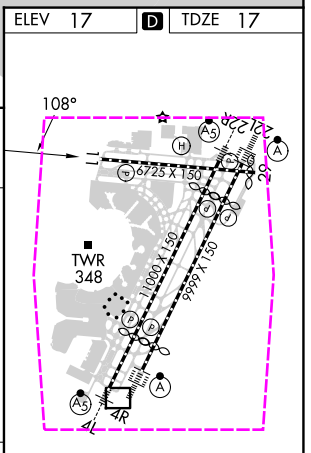
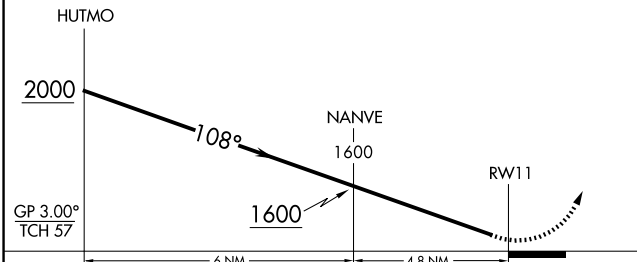
NEWARK LIBERTY INTL (EWR)

RNP APCH - GPS.	MISSED APPROACH: (Do not exceed 230K until JKLNE)
RADAR required.	Climb to 2000 direct ROOSO and right turn on track
Autopilot coupled approach NA below 312.	194° to JKLNE and right turn on track 245° to JEFFB and
NA Rwy 11 helicopter visibility reduction below RVR 4000 NA.	left turn on track 218° to RAATO and hold.

D-ATIS	NEWARK APP CON	NEWARK TOWER	GND CON	CLNC DEL	CPDLC
115.7 134.825	128.55 379.9	118.3 257.6	121.8	118.85	



2000	ROOSO	JKLNE	JEFFB	RAATO
↑	tr 194°	tr 245°	tr 218°	



CATEGORY	A	B	C	D
GLS DA	312/45	295 (300-7%)		

NEWARK, NEW JERSEY  
Amdt 1 15JUN23

40°42'N-74°10'W

NEWARK LIBERTY INTL (EWR)

# GLS RWY 11

NE-2, 10 JUL 2025 to 07 AUG 2025

NE-2, 10 JUL 2025 to 07 AUG 2025

HIRL All Rwy's  
REIL Rwy's 11, 22R, and 29  
TDZ/CL All Rwy's

NEWARK, NEW JERSEY

AL-285 (FAA)

25219

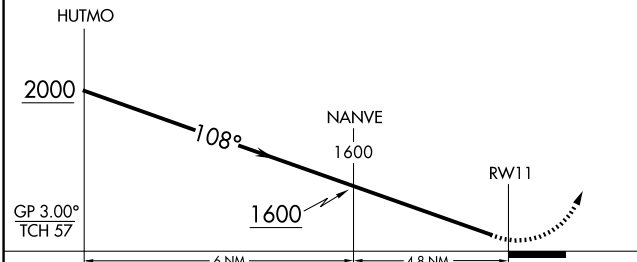
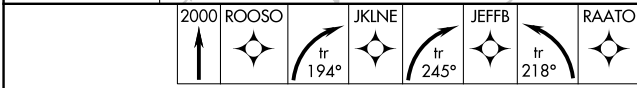
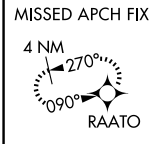
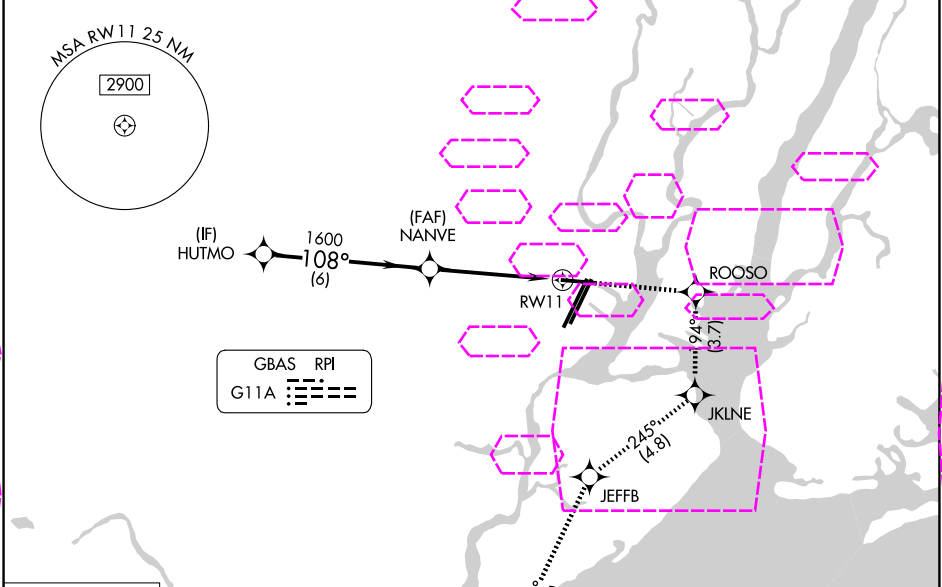
GBAS CH <b>21905</b> <b>G11A</b>	APP CRS <b>108°</b>	Rwy Ldg TDZE <b>17</b> Apt Elev <b>17</b>
--	------------------------	---

GLS RWY 11

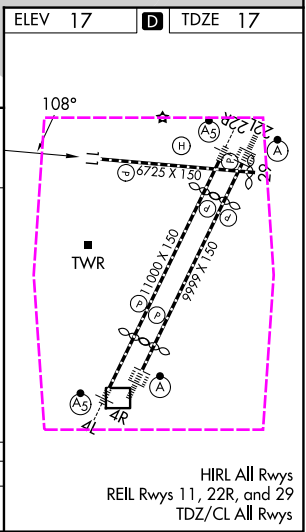
NEWARK LIBERTY INTL (EWR)

RNP APCH - GPS.	MISSED APPROACH: (Do not exceed 230K until JKLNE)
RADAR required.	Climb to 2000 direct ROOSO and right turn on track 194° to JKLNE and right turn on track 245° to JEFFB and left turn on track 218° to RAATO and hold.
Autopilot coupled approach NA below 312.	
NA Rwy 11 helicopter visibility reduction below RVR 4000 NA.	

D-ATIS <b>115.7 134.825</b>	NEWARK APP CON <b>128.55 379.9</b>	NEWARK TOWER <b>118.3 257.6</b>	GND CON <b>121.8</b>	CLNC DEL <b>118.85</b>	CPDLC
--------------------------------	---------------------------------------	------------------------------------	-------------------------	---------------------------	-------



CATEGORY	A	B	C	D
GLS DA	312/45	295 (300-7%)		



NEWARK, NEW JERSEY  
Amdt 1 15JUN23

40°42'N-74°10'W

NEWARK LIBERTY INTL (EWR)

GLS RWY 11

NE-2, 07 AUG 2025 to 04 SEP 2025

NE-2, 07 AUG 2025 to 04 SEP 2025