

NEWARK, NEW JERSEY


AL-285 (FAA)

25107

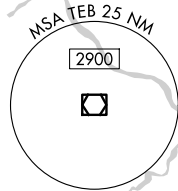
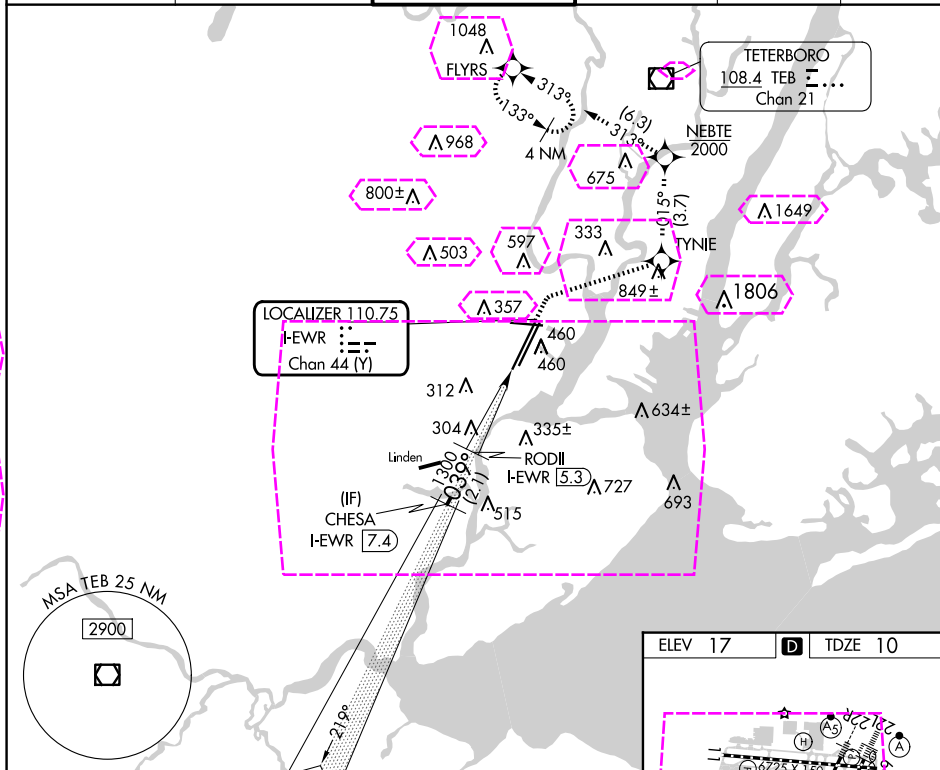
LOC/DME I-EWR 110.75 Chan 44 (Y)	APP CRS 039°	Rwy Idg 3459 TDZE 10 Apt Elev 17
--	------------------------	---

COPTER ILS Y or LOC Y RWY 4L

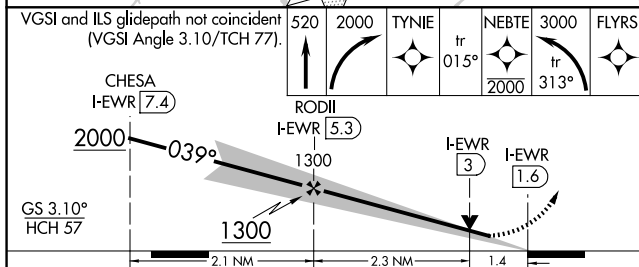
NEWARK LIBERTY INTL (EWR)

RNP APCH - GPS.	MALSR 	MISSED APPROACH: Climb to 520, then climbing right turn to 2000 direct TYNIE, then on track 015° to NEBTE, cross NEBTE at or below 2000, then climbing left turn to 3000 on track 313° to FLYRS and hold.
DME and RADAR required.		

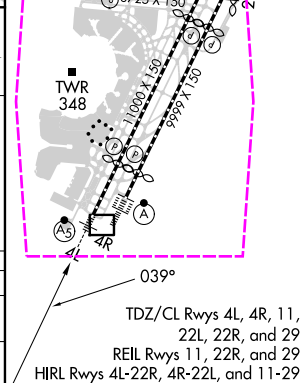
D-ATIS 115.7 134.825	NEWARK APP CON 128.55 379.9	NEWARK TOWER 118.3 257.6	GND CON 121.8	CLNC DEL 118.85	CPDLC
--------------------------------	---------------------------------------	------------------------------------	-------------------------	---------------------------	-------



VGSI and ILS glidepath not coincident
(VGSI Angle 3.10/TCH 77).



CATEGORY	COPTER	
H-ILS 4L	210/12	200 (200-¼)
H-LOC 4L	560/12	550 (600-¼)



NEWARK, NEW JERSEY
Amdt 2 15JUN23

40°42'N-74°10'W

NEWARK LIBERTY INTL (EWR)

COPTER ILS Y or LOC Y RWY 4L

NE-2, 10 JUL 2025 to 07 AUG 2025

NE-2, 10 JUL 2025 to 07 AUG 2025

NEWARK, NEW JERSEY

AL-285 (FAA)

25219

LOC/DME I-EWR 110.75 Chan 44 (Y)	APP CRS 039°	Rwy Ldg 3459 TDZE 10 Apt Elev 17
--	------------------------	---

COPTER ILS Y or LOC Y RWY 4L

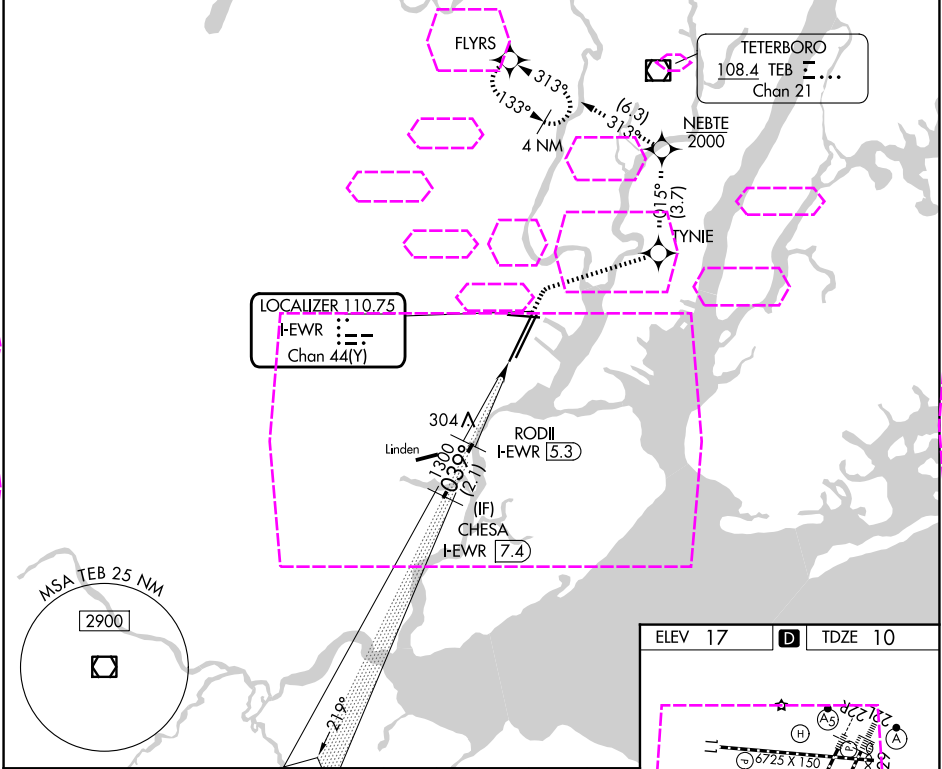
NEWARK LIBERTY INTL (EWR)

RNP APCH - GPS.
DME and RADAR required.
▼
▲ NA

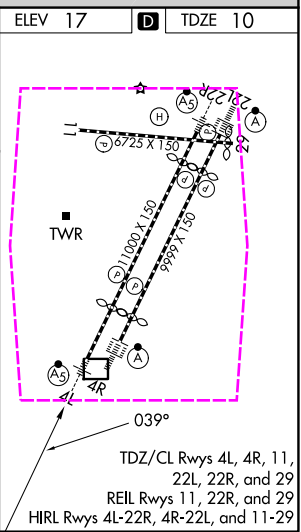


MISSED APPROACH: Climb to 520, then climbing right turn to 2000 direct TYNIE, then on track 015° to NEBTE, cross NEBTE at or below 2000, then climbing left turn to 3000 on track 313° to FLYRS and hold.

D-ATIS 115.7 134.825	NEWARK APP CON 128.55 379.9	NEWARK TOWER 118.3 257.6	GND CON 121.8	CLNC DEL 118.85	CPDLC
--------------------------------	---------------------------------------	------------------------------------	-------------------------	---------------------------	-------



VGSI and ILS glidepath not coincident (VGSI Angle 3.10/TCH 77).					
CHESA I-EWR 7.4	RODII I-EWR 5.3	TYNIE tr 015°	NEBTE tr 313°	FLYRS	
2000	1300				
GS 3.10° HCH 57					
2.1 NM 2.3 NM 1.4					
CATEGORY	COPTER				
H-ILS 4L	210/12 200 (200-¼)				
H-LOC 4L	560/12 550 (600-¼)				



NEWARK, NEW JERSEY
Amdt 2 15JUN23

40°42'N-74°10'W

NEWARK LIBERTY INTL (EWR)

COPTER ILS Y or LOC Y RWY 4L

NE-2, 07 AUG 2025 to 04 SEP 2025

NE-2, 07 AUG 2025 to 04 SEP 2025