

NEWARK, NEW JERSEY

AL-285 (FAA)

25107

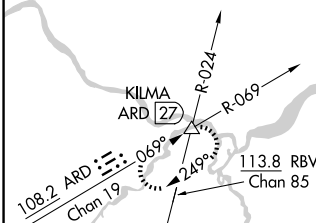
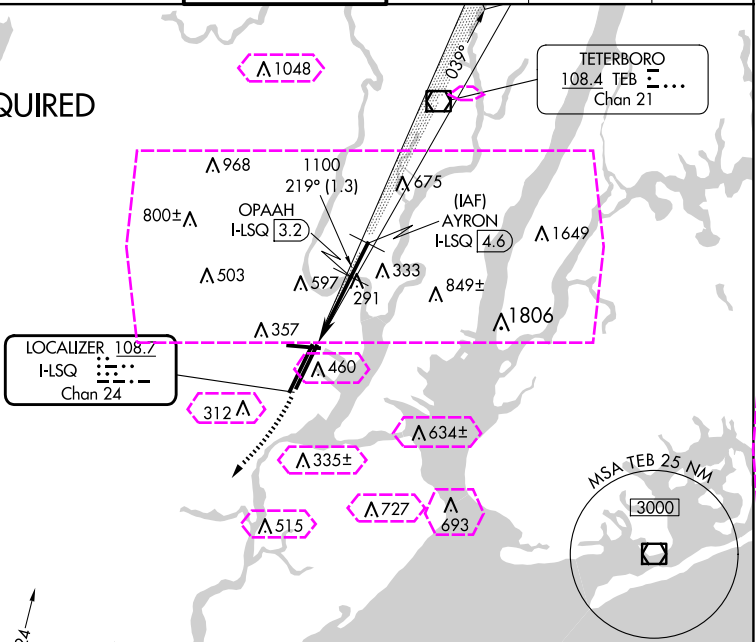
LOC/DME I-LSQ 108.7 Chan 24	APP CRS 219°	Rwy ldg 3205 TDZE 11 Apt Elev 18
---	------------------------	---

COPTER ILS/DME RWY 22L

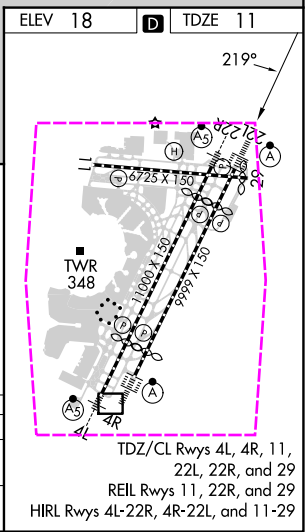
NEWARK LIBERTY INTL (EWR)

T		ALSf-2 	MISSED APPROACH: Climbing right turn to 2000 heading 225° then climbing right turn to 3000 via ARD R-069 to KILMA INT and hold.		
D-ATIS 115.7 134.825	NEWARK APP CON 128.55 379.9	NEWARK TOWER 118.3 257.6	GND CON 121.8	CLNC DEL 118.85	CPDLC

RADAR REQUIRED



2000 hdg 225°	3000	ARD R-069	KILMA Δ	VGSI and ILS glidepath not coincident (VGSI Angle 3.00/TCH 60). OPAAH I-LSQ 3.2 AYRON I-LSQ 4.6
CATEGORY COPTER				
H-ILS 22L	211/12 200 (200-¼)			
H-LOC 22L	560/12 549 (600-¼)			



NEWARK, NEW JERSEY
Orig-D 21JUL16

40°42'N-74°10'W

NEWARK LIBERTY INTL (EWR)

COPTER ILS/DME RWY 22L

NE-2, 10 JUL 2025 to 07 AUG 2025

NE-2, 10 JUL 2025 to 07 AUG 2025

