

WAAS CH <b>93713</b> <b>W02D</b>	APP CRS <b>021°</b>	Rwy Ldg <b>8000</b> TDZE <b>590</b> Apt Elev <b>599</b>
--	------------------------	---

## RNAV (GPS) Y RWY 2R

NASHVILLE INTL (BNA)

RNP APCH.

**⚠** For uncompensated Baro-VNAV systems, LNAV/VNAV NA below -11°C or above 54°C. Simultaneous approach authorized with Rwy 2L/C. LNAV procedure NA during simultaneous operations. Use of FD or AP providing RNAV track guidance required during simultaneous operations. For inop ALSF-2 increase LNAV/VNAV visibility all Cats to RVR 5400.

ALSF-2



**MISSED APPROACH:** Climb to 1300 then climbing right turn to 4000 direct LENON and hold.

D-ATIS

135.1

NASHVILLE APP CON

118.4 360.7

## NASHVILLE TOWER

118.6 257.8

GND CON

**121.9 348.6**

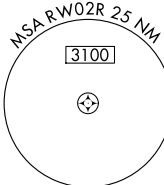
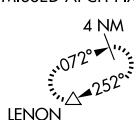
CLNC DE

126.05

APPENDIX

Procedure NA for arrivals at  
BNA VORTAC airway radials  
190 CW 270.

MISSED APCH FIX



Procedure NA for arrivals at SYI VOR/DME on V16 eastbound, V321 southwest bound.

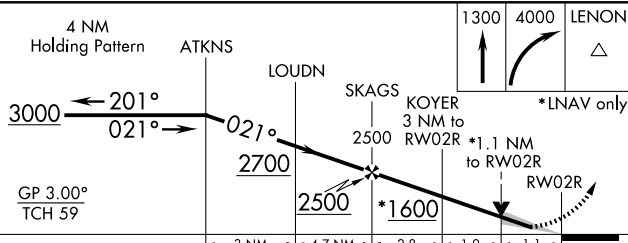
ELEV 599


<b>D</b>	TDZE 590
----------	----------

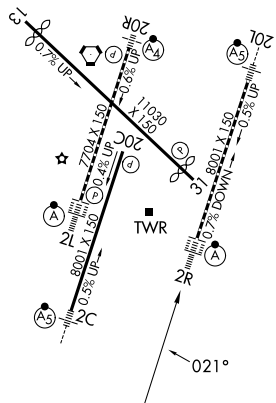
HIRL all Rwys

TDZ/CL Rwy 2L and 2R

REIL Rwys 13, 20C, and 31



CATEGORY		A	B	C	D
LPV	DA	790/18 200 (200-½)			
LNAV/ VNAV	DA	928/30 338 (400-⅝)			
LNAV MDA		1020/24 430 (500-½)	1020/40 430 (500-¾)		
 CIRCLING		1100-1 501 (600-1)	1120-1 521 (600-1)	1200-1¾ 601 (700-1¾)	1380-2½ 781 (800-2½)



NASHVILLE, TENNESSEE  
Amdt 2E 16JUL20

36°07'N-86°41'W

NASHVILLE INTL (BNA)

RNAV (GPS) Y RWY 2R

SE-1, 10 JUL 2025 to 07 AUG 2025

SE-1, 07 AUG 2025 to 04 SEP 2025