

NASHVILLE, TENNESSEE

AL-282 (FAA)

25163

WAAS CH <b>42713</b> <b>W02A</b>	APP CRS <b>021°</b>	Rwy Ldg TDZE Apt Elev	<b>7702</b> <b>599</b> <b>599</b>
--	------------------------	-----------------------------	---

# RNAV (GPS) Y RWY 2L

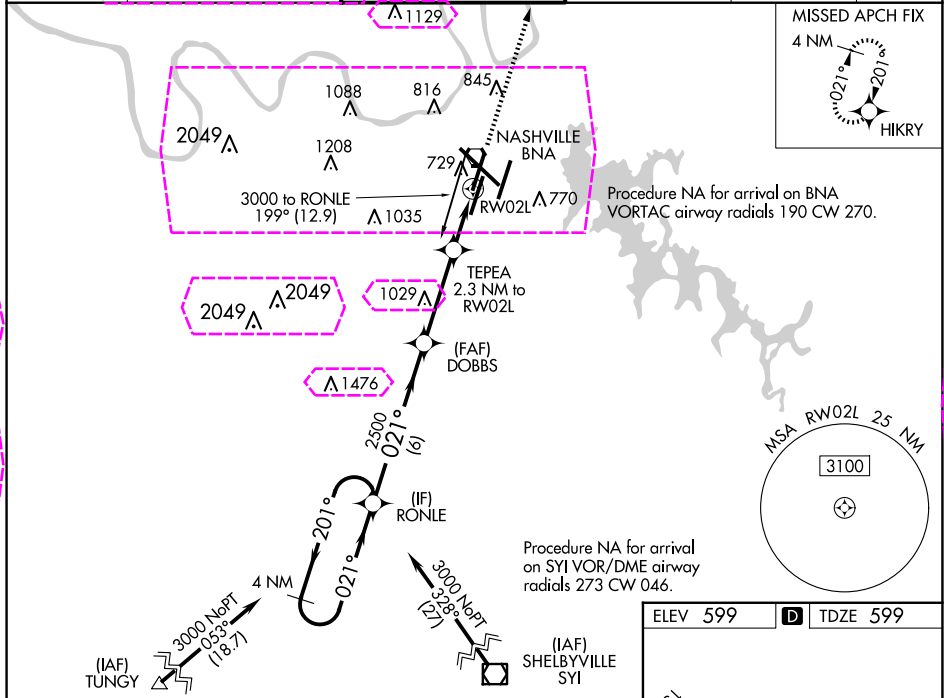
NASHVILLE INTL (BNA)

▼ For uncompensated Baro-VNAV systems, LNAV/VNAV NA below -11°C (13°F) or above 54°C (130°F). Use of FD or AP providing RNAV track guidance required during simultaneous operations. LNAV procedure NA during simultaneous operations. Simultaneous approach authorized with Rwy 2R.  
DME/DME RNP-0.3 NA.

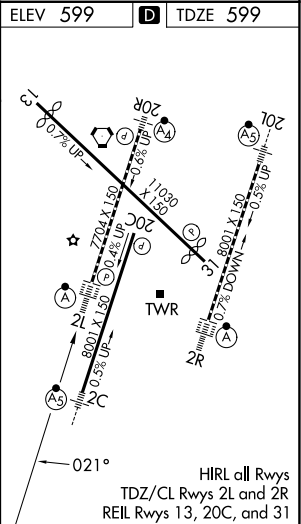
ALSF-2

MISSED APPROACH:  
Climb to 4000 direct HIKRY and hold, continue climb-in-hold to 4000.

D-ATIS <b>135.1</b>	NASHVILLE APP CON <b>118.4 360.7</b>	NASHVILLE TOWER <b>118.6 257.8</b>	GND CON <b>121.9 348.6</b>	CLNC DEL <b>126.05</b>	CPDLC
------------------------	---	---------------------------------------	-------------------------------	---------------------------	-------



4 NM Holding Pattern		RONLE	DOBBS	TEPEA 2.3 NM to RW02L	4000	HIKRY
3000 ← 201°		021° →	2500	1.2 NM to RW02L		
GP 3.00° TCH 55		2500	*1380	RW02L		
		6 NM	3.5 NM	1.1 NM	1.2 NM	
CATEGORY	A	B	C	D		
LPV DA	799/18		200 (200-½)			
LNAV/VNAV DA	949/30		350 (400-¾)			
LNAV MDA	1020/24	421 (500-½)	1020/40	421 (500-¾)		
CIRCLING	1100-1 501 (600-1)	1120-1 521 (600-1)	1200-1¾ 601 (700-1¾)	1380-2½ 781 (800-2½)		



WAAS CH <b>42713</b> <b>W02A</b>	APP CRS <b>021°</b>	Rwy Ldg <b>7702</b> TDZE <b>599</b> Apt Elev <b>599</b>
--	------------------------	---

RNAV (GPS) Y RWY 2L  
NASHVILLE INTL (BNA)

NASHVILLE INTL (BNA)

**V** For uncompensated Baro-VNAV systems, LNAV/VNAV NA below -1.1°C (13°F) or above 54°C (130°F). Use of FD or AP providing RNAV track guidance required during simultaneous operations. LNAV procedure NA during simultaneous operations. Simultaneous approach authorized with Rwy 2R.  
**A** DME/DME RNP-0.3 NA.

ALSF-2



**MISSED APPROACH:**  
Climb to 4000 direct HIKRY  
and hold, continue  
climb-in-hold to 4000.

D-ATIS  
135.1

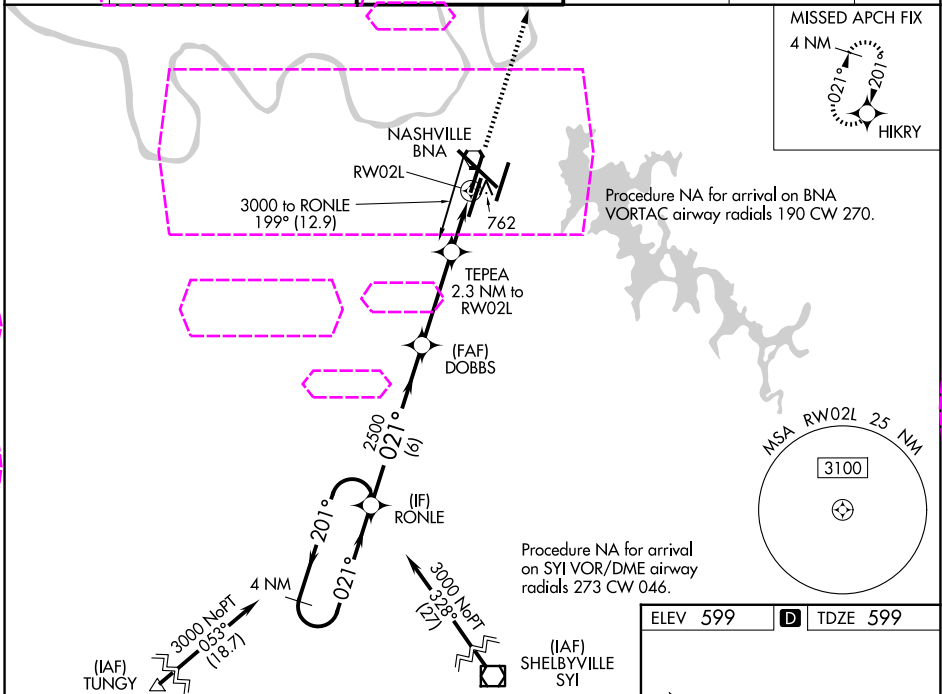
NASHVILLE APP CON  
**118.4 360.7** (030°-196°)  
**119.35 372.0** (197°-029°)

NASHVILLE TOWER  
118.6 257.8

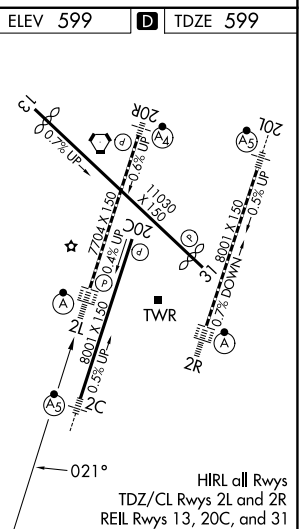
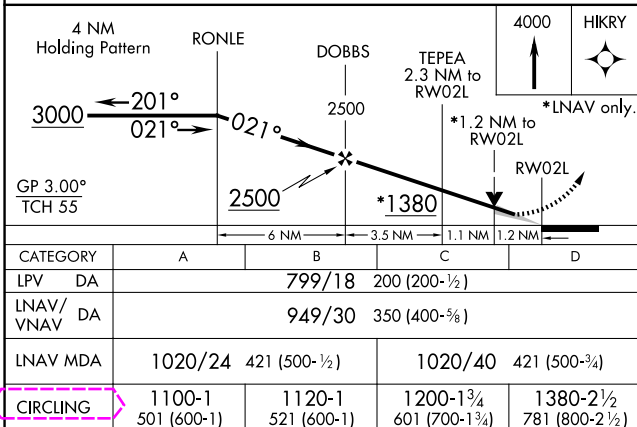
GND CON  
121.9 348.6

CLNC DEL  
**126.05**

CPDLC



SE-1, 07 AUG 2025 to 04 SEP 2025



NASHVILLE, TENNESSEE  
Amdt 3A 17AUG17

36°07'N-86°41'W

NASHVILLE INTL (BNA)

RNAV (GPS) Y RWY 2L