

NASHVILLE, TENNESSEE

AL-282 (FAA)

25163

| | | |
|--|------------------------|--|
| WAAS CH 70613 W02B | APP CRS 021° | Rwy Ldg TDZE Apt Elev 7601 587 599 |
|--|------------------------|--|

RNAV (GPS) Y RWY 2C

NASHVILLE INTL (BNA)

RNP APCH - GPS.

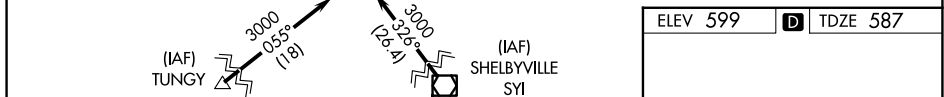
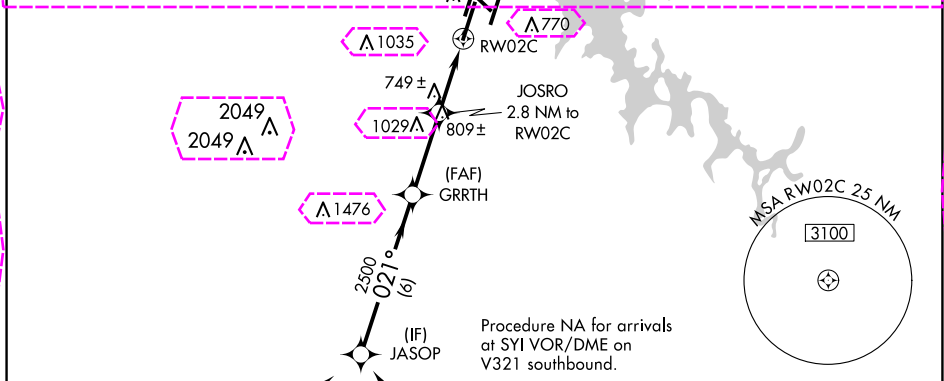
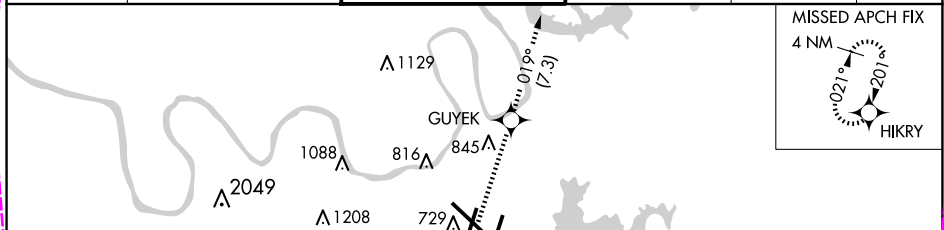
- ▼ For uncompensated Baro-VNAV systems, LNAV/VNAV NA below -11°C or above 54°C. Use of FD or AP providing RNAV track guidance required during simultaneous operations. LNAV procedure NA during simultaneous operations. Simultaneous approach authorized with Rwy 2R. ** RVR 1800 authorized with use of FD or AP or HUD to DA.
- ▲

MALSR



MISSED APPROACH: Climb to 4000 direct GUYEK and on track 019° to HIKRY and hold, continue climb-in-hold to 4000.

| | | | | | |
|------------------------|---|---------------------------------------|-------------------------------|---------------------------|-------|
| D-ATIS 135.1 | NASHVILLE APP CON 118.4 360.7 | NASHVILLE TOWER 118.6 257.8 | GND CON 121.9 348.6 | CLNC DEL 126.05 | CPDLC |
|------------------------|---|---------------------------------------|-------------------------------|---------------------------|-------|



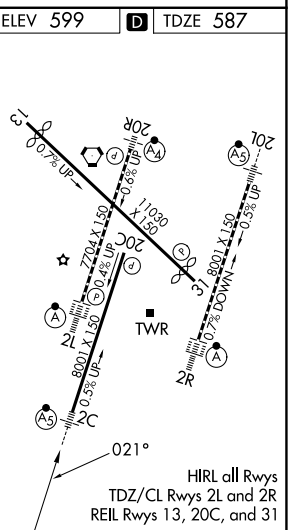
| | | | | | | | |
|---|-----------------------|--|-----------------------|--------|-------------------------|------------------|-------------------------|
| VGSI and RNAV glidepath not coincident. | | | | 4000 | GUYEK | tr 019° | HIKRY |
| JASOP | | | | GRRTH | JOSRO | 2.8 NM to RWY 2C | *LNAV only |
| 3000 | | | | 2500 | *1.2 NM to RWY 2C | | |
| GP 3.00° TCH 60 | | | | | | | |
| 6 NM | | | | 3.1 NM | 1.6 NM | 1.2 NM | |
| CATEGORY | A | | B | | C | | D |
| LPV DA** | 787/24 | | 200 (200-½) | | | | |
| LNAV/VNAV DA | 1059/60 | | 472 (500-1¼) | | | | |
| LNAV MDA | 1000/24 | | 413 (500-½) | | 1000/40 | | 413 (500-¾) |
| CIRCLING | 1100-1 501 (600-1) | | 1120-1 521 (600-1) | | 1200-1¾ 601 (700-1¾) | | 1380-2½ 781 (800-2½) |

NASHVILLE, TENNESSEE
Amdt 2B 07OCT21

36°07'N-86°41'W

RNAV (GPS) Y RWY 2C

NASHVILLE INTL (BNA)



SE-1, 10 JUL 2025 to 07 AUG 2025

SE-1, 10 JUL 2025 to 07 AUG 2025

NASHVILLE, TENNESSEE

AL-282 (FAA)

25219

| | | |
|--|------------------------|--|
| WAAS CH 70613 W02B | APP CRS 021° | Rwy Ldg TDZE Apt Elev 7601 587 599 |
|--|------------------------|--|

RNAV (GPS) Y RWY 2C
NASHVILLE INTL (BNA)

RNP APCH - GPS.

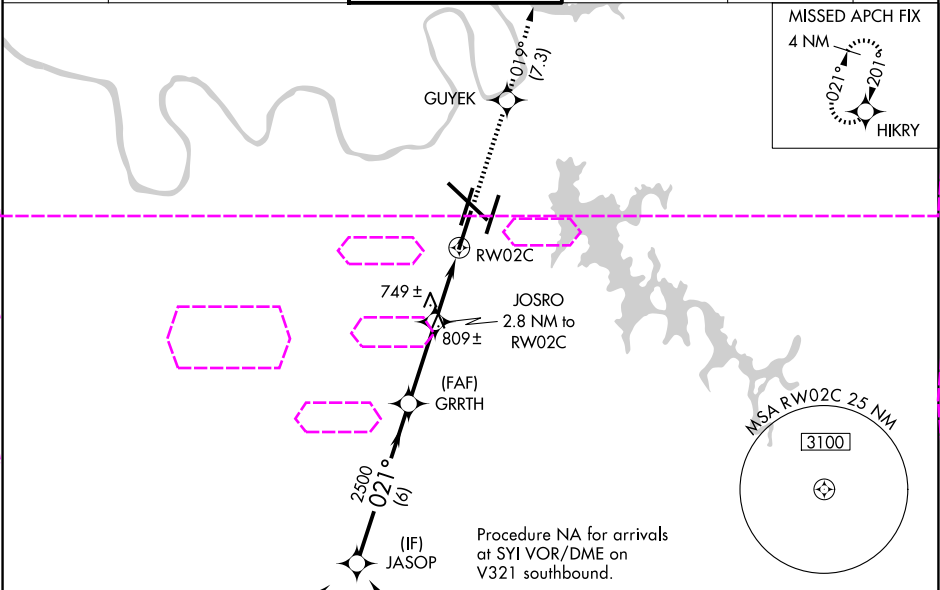
▼ For uncompensated Baro-VNAV systems, LNAV/VNAV NA below -11°C or above 54°C. Use of FD or AP providing RNAV track guidance required during simultaneous operations. LNAV procedure NA during simultaneous operations. Simultaneous approach authorized with Rwy 2R.
▲ ** RVR 1800 authorized with use of FD or AP or HUD to DA.

MALSR

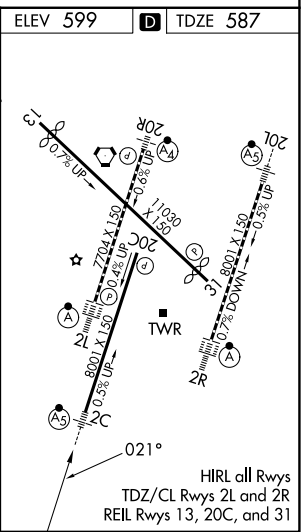


MISSED APPROACH: Climb to 4000 direct GUYEK and on track 019° to HIKRY and hold, continue climb-in-hold to 4000.

| | | | | | |
|------------------------|--|---------------------------------------|-------------------------------|---------------------------|-------|
| D-ATIS 135.1 | NASHVILLE APP CON 118.4 360.7 (030°-196°) 119.35 372.0 (197°-029°) | NASHVILLE TOWER 118.6 257.8 | GND CON 121.9 348.6 | CLNC DEL 126.05 | CPDLC |
|------------------------|--|---------------------------------------|-------------------------------|---------------------------|-------|



| | | | | | | | |
|---|--|--|--|----------------------|--------------------|----------------------|----------------------|
| VGSI and RNAV glidepath not coincident. | | | | 4000 | GUYEK | tr 019° | HIKRY |
| JASOP | | | | GRTRH | JOSRO | *LNAV only | |
| 3000 | | | | 2500 | 2.8 NM to RWY 2C | *1.2 NM to RWY 2C | |
| GP 3.00° | | | | 2500 | 1520 | 6 NM | |
| TCH 60 | | | | 2500 | 1520 | 3.1 NM | |
| CATEGORY | | | | A | B | C | D |
| LPV DA** | | | | 787/24 200 (200-½) | | | |
| LNAV/ VNAV DA | | | | 1059/60 472 (500-1¼) | | | |
| LNAV MDA | | | | 1000/24 413 (500-½) | | 1000/40 413 (500-¾) | |
| CIRCLING | | | | 1100-1 501 (600-1) | 1120-1 521 (600-1) | 1200-1¾ 601 (700-1¾) | 1380-2½ 781 (800-2½) |



NASHVILLE, TENNESSEE
Amdt 2B 07OCT21

36°07'N-86°41'W

NASHVILLE INTL (BNA)
RNAV (GPS) Y RWY 2C

SE-1, 07 AUG 2025 to 04 SEP 2025

SE-1, 07 AUG 2025 to 04 SEP 2025