

NASHVILLE, TENNESSEE

AL-282 (FAA)


25163

WAAS CH 49013 W20D	APP CRS 201°	Rwy Ldg TDZE 551 Apt Elev 599
--	------------------------	---

RNAV (GPS) Y RWY 20L

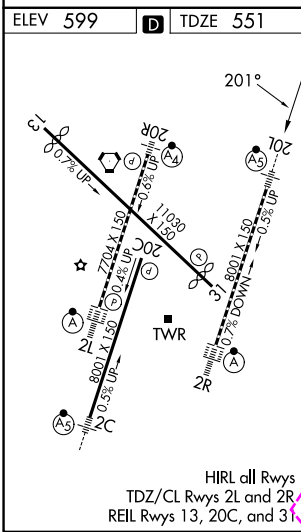
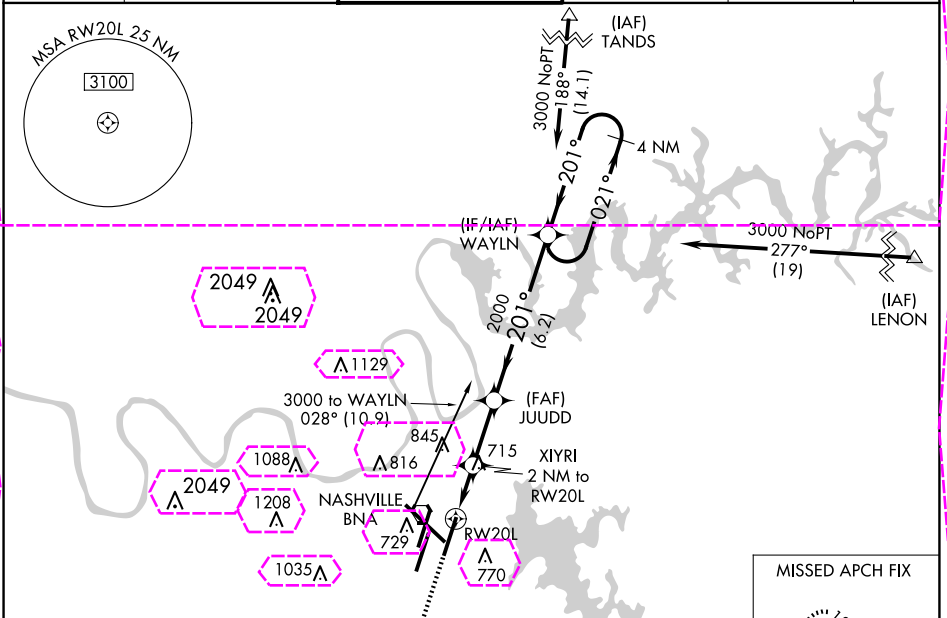
NASHVILLE INTL (BNA)

⚠ For uncompensated Baro-VNAV systems, procedure NA below -11°C (13°F) or above 54°C (130°F). DME/DME RNP-0.3 NA. Simultaneous approach authorized with Rwy 20R. LNAV procedure NA during simultaneous operations. Use of FD or AP providing RNAV track guidance required during simultaneous operations. For inop MALSR, increase LNAV/VNAV all Cots visibility to 1%. ** RVR 1800 authorized with use of FD or AP or HUD to DA.

MALSR


MISSED APPROACH:
Climb to 1300 then climbing left turn to 4000 direct CENOP and hold.

D-ATIS 135.1	NASHVILLE APP CON 118.4 360.7	NASHVILLE TOWER 118.6 257.8	GND CON 121.9 348.6	CLNC DEL 126.05	CPDLC
------------------------	---	---------------------------------------	-------------------------------	---------------------------	-------



ELEV 599	TDZE 551
1300	4000
CENOP	△
*LNAV only.	
*1.2 NM to RW20L	
RW20L	
JUDD 2000	
XIYRI 2 NM to RW20L	
WAYLN 4 NM Holding Pattern	
021° → 3000	
← 201°	
GP 3.00° TCH 47	
1.2 NM → 0.8 NM → 2.4 NM → 6.2 NM	
CATEGORY	A B C D
LPV DA	** 751/24 200 (200-½)
LNAV/VNAV DA	1025/58 474 (500-1¼)
LNAV MDA	980/24 429 (400-½) 980/40 429 (400-¾)
CIRCLING	1100-1 501 (600-1) 1120-1 521 (600-1) 1200-1¾ 601 (700-1¾) 1380-2½ 781 (800-2½)

NASHVILLE, TENNESSEE
Amdt 2B 17AUG17

36°07'N-86°41'W

RNAV (GPS) Y RWY 20L

NASHVILLE INTL (BNA)

SE-1, 10 JUL 2025 to 07 AUG 2025

SE-1, 10 JUL 2025 to 07 AUG 2025

SE-1, 07 AUG 2025 to 04 SEP 2025