

NASHVILLE, TENNESSEE

AL-282 (FAA)

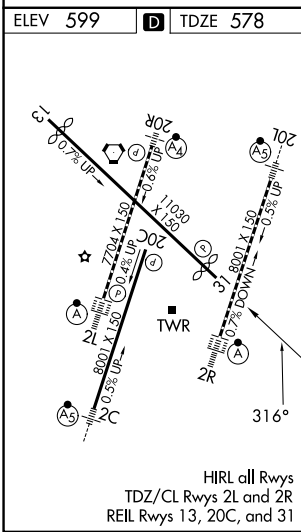
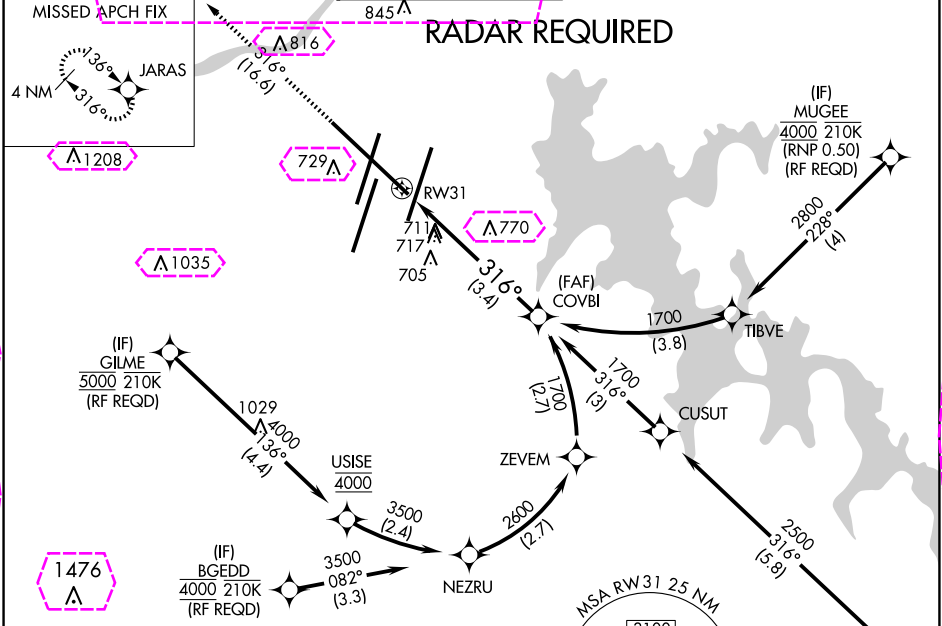
25163

APP CRS	Rwy Ldg	9487
316°	TDZE	578
	Apt Elev	599

# RNAV (RNP) Z RWY 31

NASHVILLE INTL (BNA)

For uncompensated Baro-VNAV systems, procedure NA below -16°C (4°F) or above 54°C (130°F). GPS required.			MISSED APPROACH: Climb to 3100 on track 316° to JARAS and hold.		
D-ATIS 135.1	NASHVILLE APP CON 118.4 360.7	NASHVILLE TOWER 118.6 257.8	GND CON 121.9 348.6	CLNC DEL 126.05	CPDLC



3100	tr 316°	JARAS	See planview for multiple IF locations.	COVBI 1700
RW31				
3.4 NM				
CATEGORY	A	B	C	D
RNP 0.25 DA	1025-1½ 447 (500-1½)			
RNP 0.30 DA	1099-1¾ 521 (600-1¾)			
GP 3.00° TCH 52				
AUTHORIZATION REQUIRED				

NASHVILLE, TENNESSEE  
Amdt 1A 07DEC17

36°07'N-86°41'W

# RNAV (RNP) Z RWY 31

NASHVILLE INTL (BNA)

SE-1, 10 JUL 2025 to 07 AUG 2025

SE-1, 10 JUL 2025 to 07 AUG 2025

NASHVILLE, TENNESSEE

AL-282 (FAA)

25219

APP CRS	Rwy Ldg	9487
316°	TDZE	578
	Apt Elev	599

# RNAV (RNP) Z RWY 31

NASHVILLE INTL (BNA)

For uncompensated Baro-VNAV systems, procedure NA below -16°C (4°F) or above 54°C (130°F). GPS required.			MISSED APPROACH: Climb to 3100 on track 316° to JARAS and hold.		
D-ATIS 135.1	NASHVILLE APP CON 118.4 360.7 (030°-196°) 119.35 372.0 (197°-029°)	NASHVILLE TOWER 118.6 257.8	GND CON 121.9 348.6	CLNC DEL 126.05	CPDLC

