

NASHVILLE, TENNESSEE

AL-282 (FAA)

25163

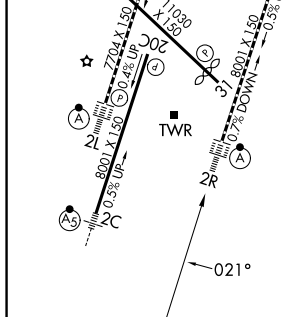
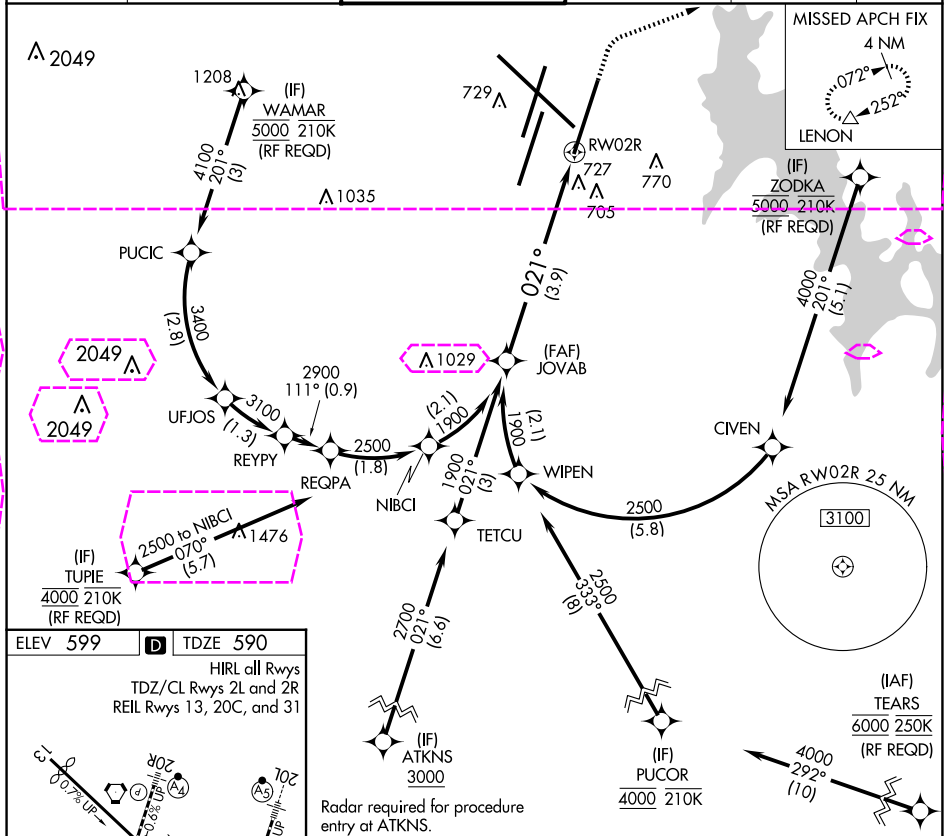
APP CRS	Rwy Ldg	8000
021°	TDZE	590
	Apt Elev	599

RNAV (RNP) Z RWY 2R

NASHVILLE INTL (BNA)

RNP AR APCH.	ALSIF-2	MISSED APPROACH: Climb to 1300 then climbing right turn to 4000 direct LENON and hold.
For uncompensated Baro-VNAV systems, procedure NA below -11°C or above 54°C. For inoperative ALSIF-2, increase RNP 0.15 all Cats visibility to RVR 5600, RNP 0.30 all Cats visibility to 1 ½ mile. Simultaneous approach authorized with Rwy 2L/C. Use of FD or AP providing RNAV track guidance required during simultaneous operations.		

D-ATIS 135.1	NASHVILLE APP CON 118.4 360.7	NASHVILLE TOWER 118.6 257.8	GND CON 121.9 348.6	CLNC DEL 126.05	CPDLC
-----------------	----------------------------------	--------------------------------	------------------------	--------------------	-------



<p>JOVAB 1900</p> <p>1900</p> <p>GP 3.00° TCH 59</p> <p>See planview for multiple IF locations.</p>		<p>1300</p> <p>4000</p> <p>LENON</p> <p>↑</p> <p>↷</p> <p>△</p>		
<p>021°</p> <p>3.9 NM</p> <p>RW02R</p>				
CATEGORY	A	B	C	D
RNP 0.15 DA	938/40 348 (400-¾)			
RNP 0.30 DA	1024/48 434 (500-1)			
AUTHORIZATION REQUIRED				

NASHVILLE, TENNESSEE
Amdt 2B 16JUL20

36°07'N-86°41'W

RNAV (RNP) Z RWY 2R

SE-1, 10 JUL 2025 to 07 AUG 2025

APP CRS 021°	Rwy Ldg 8000 TDZE 590 Apt Elev 599
------------------------	---------------------------------------------------------------

RNAV (RNP) Z RWY 2R

NASHVILLE INTL (BNA)

RNP AR APCH.

For uncompensated Baro-VNAV systems, procedure NA below -11°C or above 54°C. For inoperative ALSF-2, increase RNP 0.15 all Cats visibility to RVR 5600, RNP 0.30 all Cats visibility to 1 1/2 mile. Standard approach authorized with Rwy 2L/C. Use of FD or AP providing RNAV track guidance required during simultaneous operations.

ALSF-2



MISSED APPROACH:
Climb to 1300 then
climbing right turn to
4000 direct LENON
and hold

D-ATIS
135.1

NASHVILLE APP CON

118.4 360.7 (030°-196°)
119.35 372.0 (197°-029°)

NASHVILLE TOWER

118.6 257.8

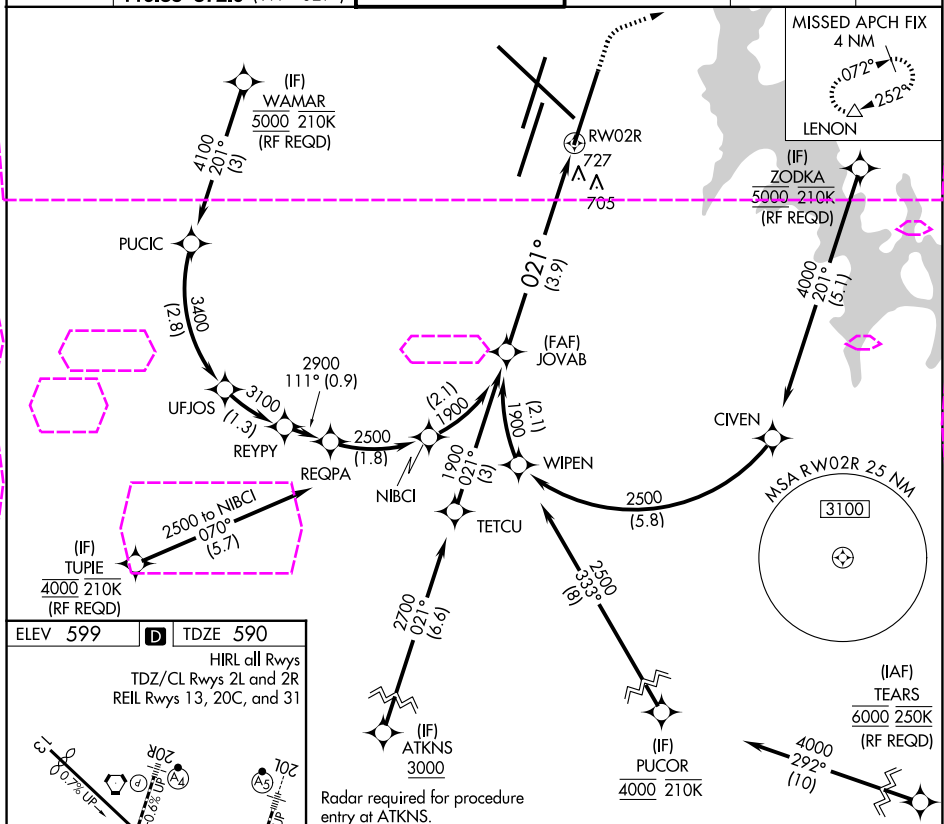
GND CON

121.9 348.6

CLNC DEL

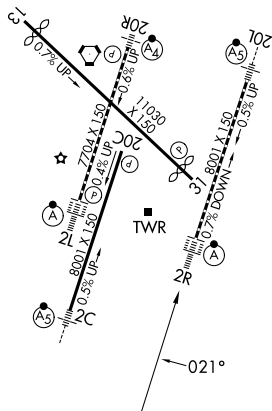
126.05

CPDLC

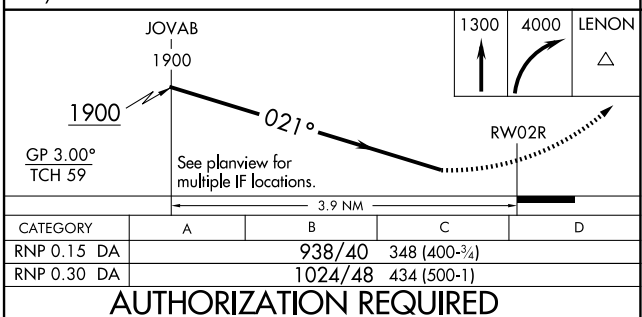


FILEV 599		TD7F 590
-----------	-----------------------------------------------------------------------------------	----------

HIRL all Rwys
TDZ/CL Rwys 2L and 2R
REIL Rwys 13, 20C, and 31



Radar required for procedure entry at ATKNS.



NASHVILLE, TENNESSEE
Amdt 2B 16JUL20

36°07'N-86°41'W

NASHVILLE INTL (BNA)

RNAV (RNP) Z RWY 2R

SE-1, 07 AUG 2025 to 04 SEP 2025