

NASHVILLE, TENNESSEE

AL-282 (FAA)

25163

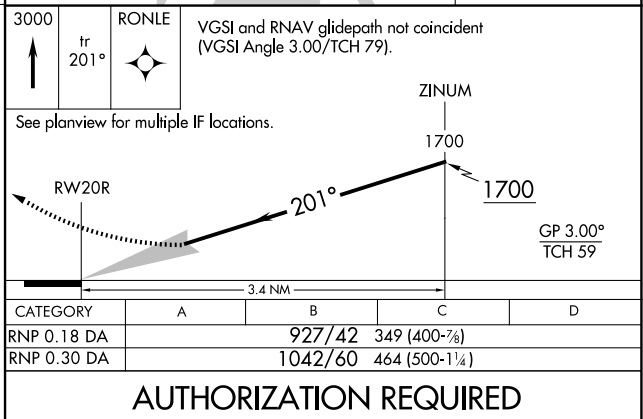
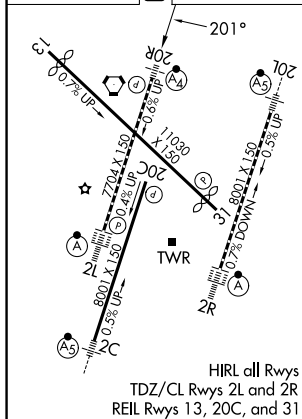
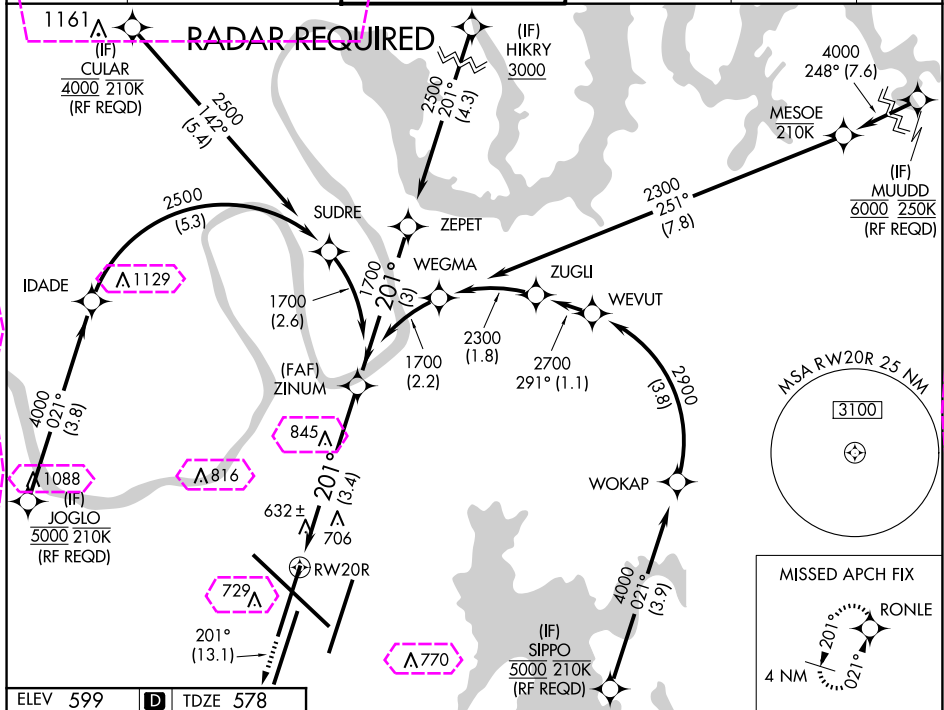
APP CRS	Rwy Ldg	7702
201°	TDZE	578
	Apt Elev	599

RNAV (RNP) Z RWY 20R

NASHVILLE INTL (BNA)

<p>GPS required. Simultaneous approach authorized with Rwy 20L. Use of FD or AP providing RNAV track guidance required during simultaneous operations. For uncompensated Baro-VNAV systems, procedure NA below -11°C (13°F) or above 54°C (130°F). For inoperative MALSF, increase RNP 0.18 all Cats visibility to RVR 5600 and RNP 0.30 all Cats visibility to 1½.</p>	<p>MALSF</p> <p>MISSED APPROACH: Climb to 3000 on track 201° to RONLE and hold.</p>
---	---

D-ATIS 135.1	NASHVILLE APP CON 118.4 360.7	NASHVILLE TOWER 118.6 257.8	GND CON 121.9 348.6	CLNC DEL 126.05	CPDLC
-----------------	----------------------------------	--------------------------------	------------------------	--------------------	-------



NASHVILLE, TENNESSEE

AL-282 (FAA)

25219

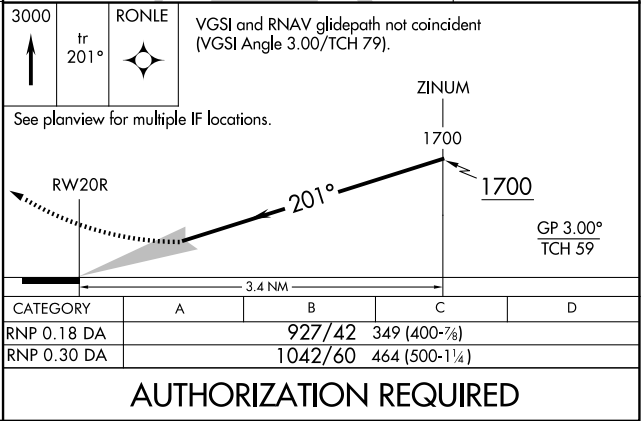
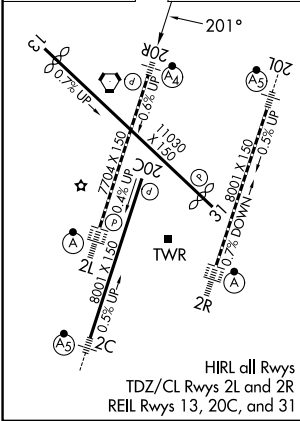
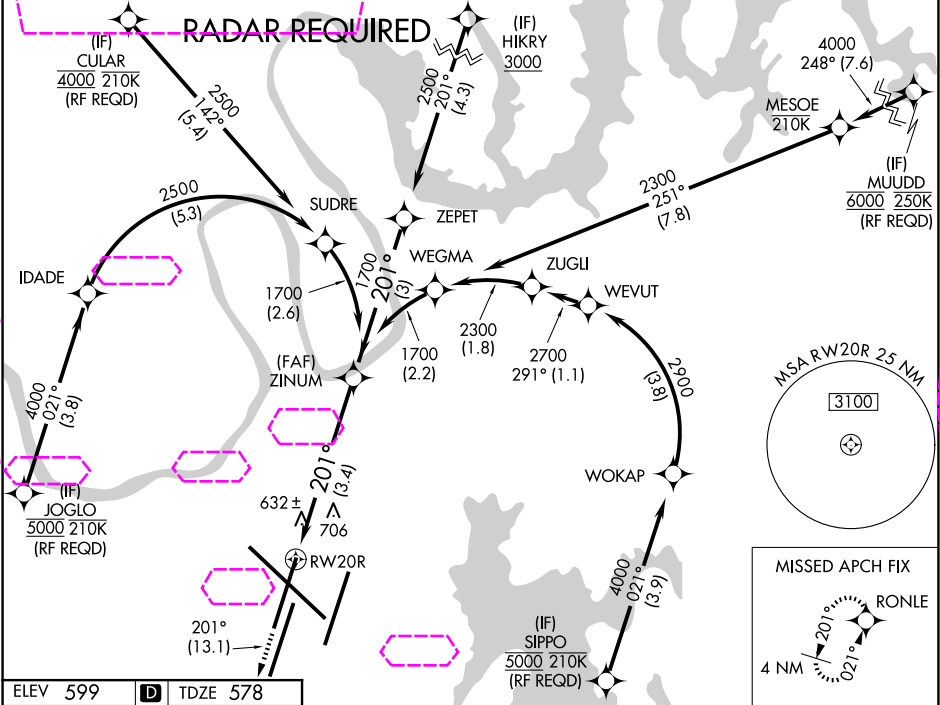
APP CRS	Rwy Ldg	7702
201°	TDZE	578
	Apt Elev	599

RNAV (RNP) Z RWY 20R

NASHVILLE INTL (BNA)

<p>GPS required. Simultaneous approach authorized with Rwy 20L. Use of FD or AP providing RNAV track guidance required during simultaneous operations. For uncompensated Baro-VNAV systems, procedure NA below -11°C (13°F) or above 54°C (130°F). For inoperative MALSF, increase RNP 0.18 all Cats visibility to RVR 5600 and RNP 0.30 all Cats visibility to 1½.</p>	<p>MALSF</p> <p>MISSED APPROACH: Climb to 3000 on track 201° to RONLE and hold.</p>
---	---

D-ATIS 135.1	NASHVILLE APP CON 118.4 360.7 (030°-196°) 119.35 372.0 (197°-029°)	NASHVILLE TOWER 118.6 257.8	GND CON 121.9 348.6	CLNC DEL 126.05	CPDLC
-----------------	--	--------------------------------	------------------------	--------------------	-------



NASHVILLE, TENNESSEE
Amdt 2A 11DEC14

36°07'N-86°41'W

NASHVILLE INTL (BNA)
RNAV (RNP) Z RWY 20R