

NASHVILLE, TENNESSEE


AL-282 (FAA)

25163

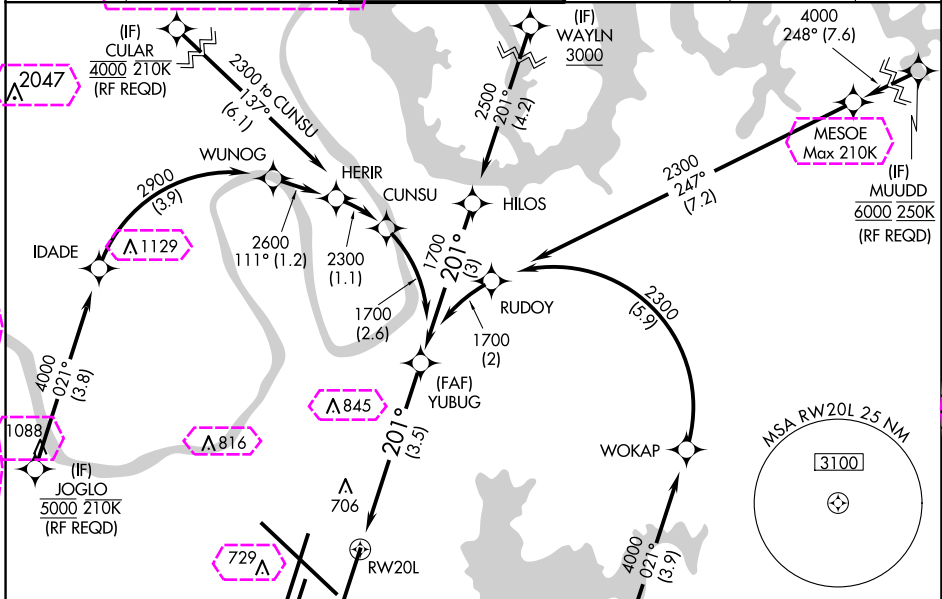
APP CRS	Rwy Ldg	8000
201°	TDZE	551
	Apt Elev	599

# RNAV (RNP) Z RWY 20L

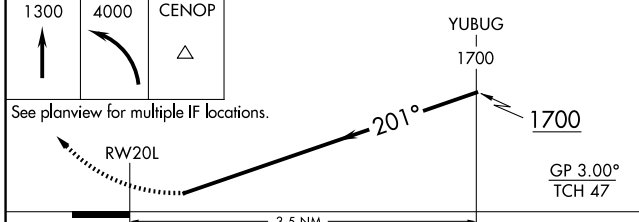
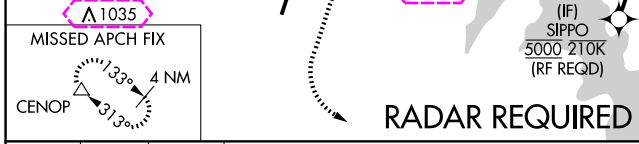
NASHVILLE INTL (BNA)

<p>GPS required. Simultaneous approach authorized with Rwy 20R. Use of FD or AP providing RNAV track guidance required during simultaneous operations. For uncompensated Baro-VNAV systems, procedure NA below -11°C (13°F) or above 54°C (130°F). Inop table does not apply to RNP 0.20. For inop MALSR, increase RNP 0.30 all Cats visibility to 1½.</p>	<p>MALSR</p> 	<p>MISSED APPROACH: Climb to 1300 then climbing left turn to 4000 direct CENOP and hold.</p>
--	--	--

D-ATIS 135.1	NASHVILLE APP CON 118.4 360.7	NASHVILLE TOWER 118.6 257.8	GND CON 121.9 348.6	CLNC DEL 126.05	CPDLC
-----------------	----------------------------------	--------------------------------	------------------------	--------------------	-------

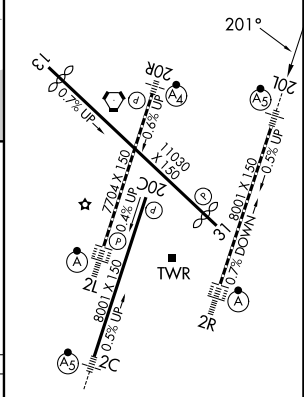


ELEV 599	TDZE 551
----------	----------



CATEGORY	A	B	C	D
RNP 0.20 DA	810/40	259 (200-¾)		
RNP 0.30 DA	1008/55	457 (400-1)		

## AUTHORIZATION REQUIRED



HIRL all Rwys  
TDZ/CL Rwys 2L and 2R  
REIL Rwys 13, 20C, and 31

NASHVILLE, TENNESSEE  
Amdt 2A 11DEC14

36°07'N-86°41'W

NASHVILLE INTL (BNA)

# RNAV (RNP) Z RWY 20L

NASHVILLE, TENNESSEE

AL-282 (FAA)

25219

APP CRS	Rwy Ldg	8000
201°	TDZE	551
	Apt Elev	599

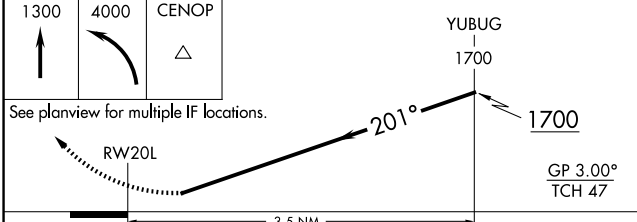
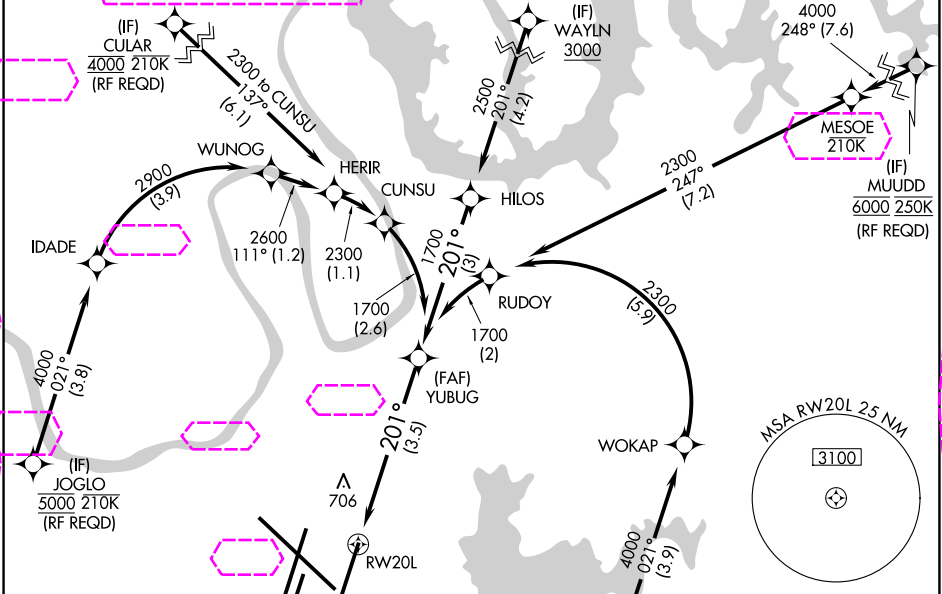
# RNAV (RNP) Z RWY 20L

NASHVILLE INTL (BNA)

GPS required. Simultaneous approach authorized with Rwy 20R. Use of FD or AP providing RNAV track guidance required during simultaneous operations. For uncompensated Baro-VNAV systems, procedure NA below -11°C (13°F) or above 54°C (130°F). Inop table does not apply to RNP 0.20. For inop MALSR, increase RNP 0.30 all Cats visibility to 1½.

MALSR  
MISSED APPROACH: Climb to 1300 then climbing left turn to 4000 direct CENOP and hold.

D-ATIS <b>135.1</b>	NASHVILLE APP CON <b>118.4 360.7</b> (030°-196°) <b>119.35 372.0</b> (197°-029°)	NASHVILLE TOWER <b>118.6 257.8</b>	GND CON <b>121.9 348.6</b>	CLNC DEL <b>126.05</b>	CPDLC
------------------------	--	---------------------------------------	-------------------------------	---------------------------	-------



CATEGORY	A	B	C	D
RNP 0.20 DA	810/40	259 (200-¾)		
RNP 0.30 DA	1008/55	457 (400-1)		

**AUTHORIZATION REQUIRED**

