

APP CRS	Rwy Ldg	8001
201°	TDZE	588
	Apt Elev	599

RNAV (GPS) RWY 20C
NASHVILLE INTL (BNA)

T DME/DME RNP-0.3 NA.
A Helicopter visibility reduction below $\frac{3}{4}$ SM NA.

MISSED APPROACH: Climb to 3000 direct JASOP and hold.

D-ATIS
135.1

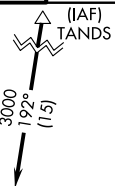
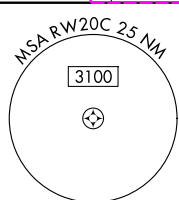
NASHVILLE APP CON
118.4 360.7

NASHVILLE TOWER
118.6 257.8

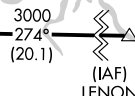
GND CON
121.9 348.6

CLNC DEL
126.05

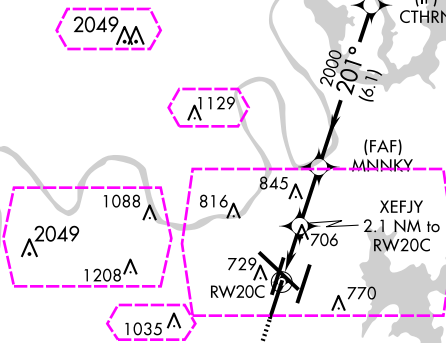
CPDLC



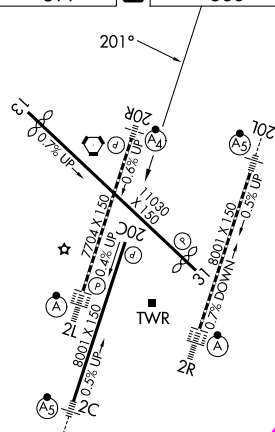
Procedure NA for arrivals at TANDS on V49 northbound.



Procedure NA for arrivals at
LENON on V140 eastbound.

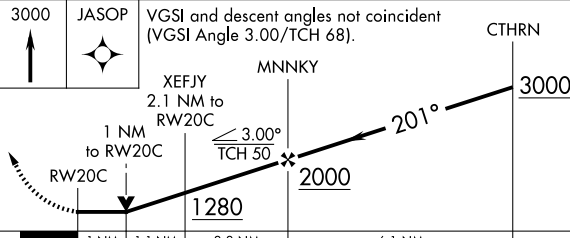


ELEV 599	D	TDZE 588
----------	----------	----------



HIRL all Rwy's
TDZ/CL Rwy's 2L and 2R
REIL Rwy's 13, 20C, and 31

MISSED APCH FIX
JASOP
201°
4 NM



CATEGORY	A	B	C	D
INAV MDA	960-1 372 (400-1)		960-1 $\frac{1}{8}$ 372 (400-1 $\frac{1}{8}$)	
CIRCLING	1100-1 501 (600-1)	1120-1 521 (600-1)	1200-1 $\frac{3}{4}$ 601 (700-1 $\frac{3}{4}$)	1380-2 $\frac{1}{2}$ 781 (800-2 $\frac{1}{2}$)

NASHVILLE, TENNESSEE

AL-282 (FAA)

25219

APP CRS	Rwy Ldg	8001
201°	TDZE	588
	Apt Elev	599

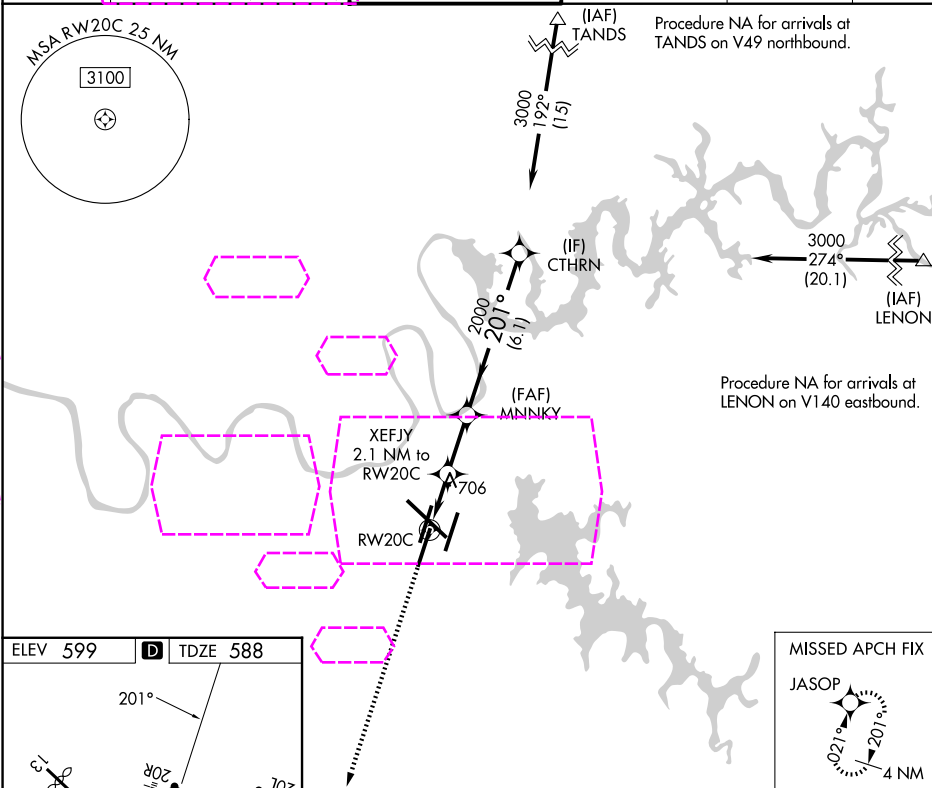
RNAV (GPS) RWY 20C

NASHVILLE INTL (BNA)

▽ **▲** DME/DME RNP-0.3 NA.
Helicopter visibility reduction below $\frac{3}{4}$ SM NA.

MISSED APPROACH: Climb to 3000 direct JASOP and hold.

D-ATIS 135.1	NASHVILLE APP CON 118.4 360.7 (030°-196°) 119.35 372.0 (197°-029°)	NASHVILLE TOWER 118.6 257.8	GND CON 121.9 348.6	CLNC DEL 126.05	CPDLC
------------------------	--	---------------------------------------	-------------------------------	---------------------------	-------



NASHVILLE, TENNESSEE

Orig-B 18SEP14

36°07'N-86°41'W

NASHVILLE INTL (BNA)

RNAV (GPS) RWY 20C

SE-1, 07 AUG 2025 to 04 SEP 2025

SE-1, 07 AUG 2025 to 04 SEP 2025